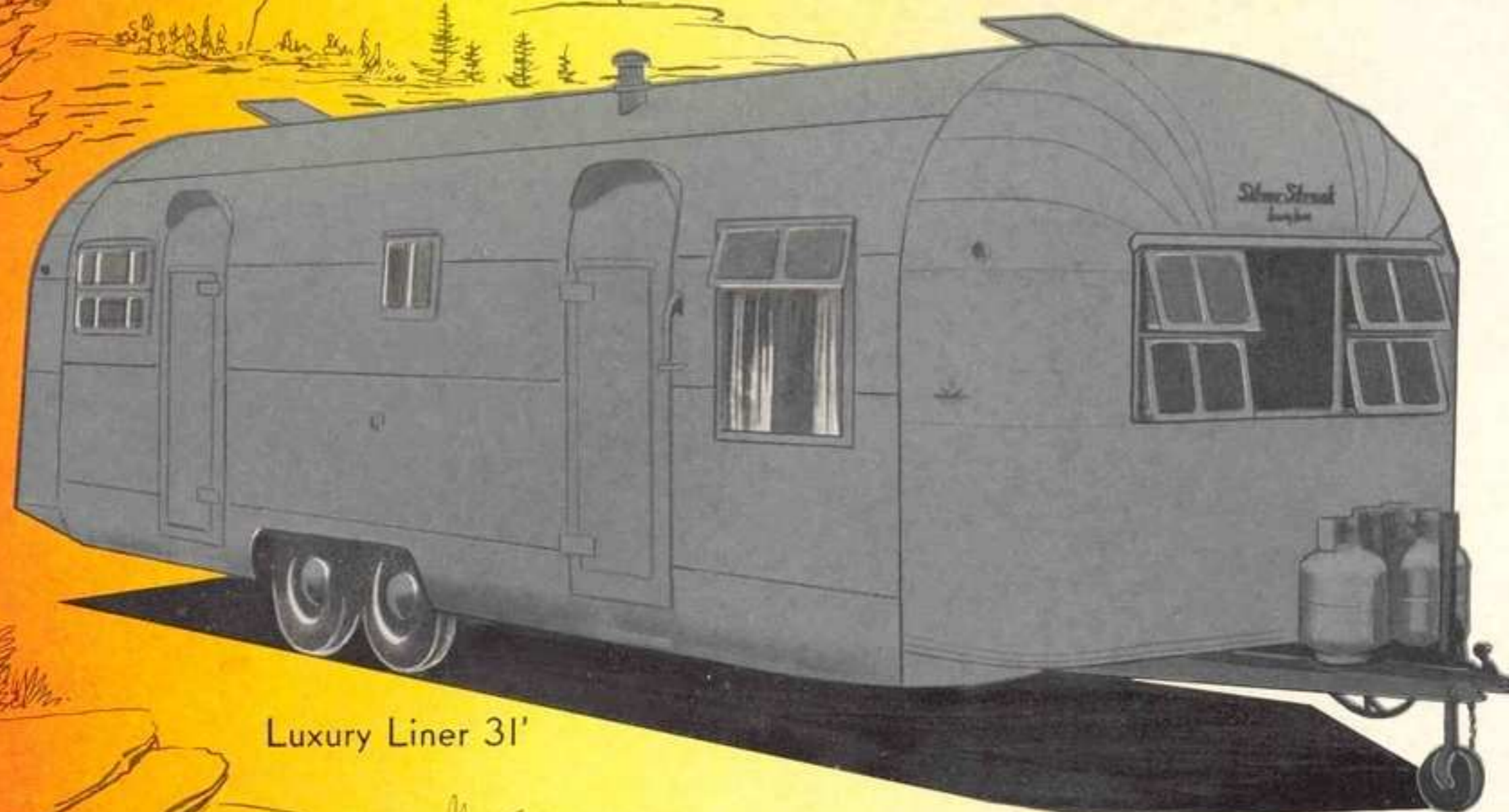


FOREMOST IN QUALITY AND DESIGN

For those who

LOVE

to travel



Luxury Liner 31'

Factory Warranty

THE LUXURIOUS

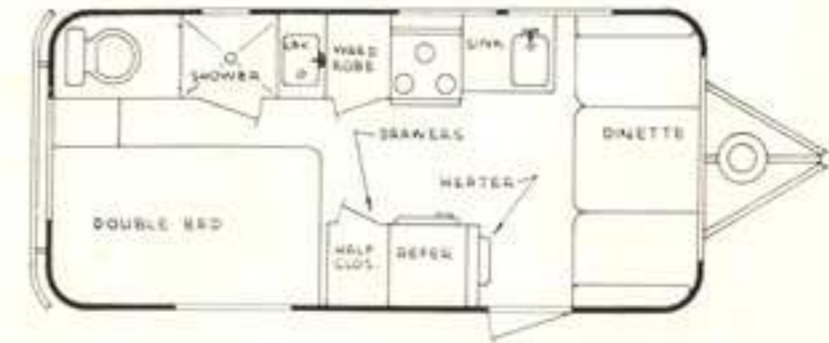
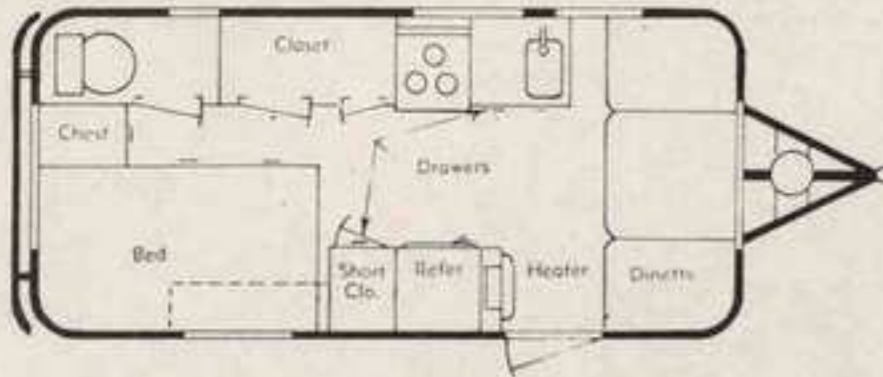
The aristocrat of the Travel Trailers. All metal lightweight aircraft type construction—designed for Travel and living.

SILVER STREAK

TOILET MODEL

the
Jet
19'

TOILET & SHOWER MODEL



STANDARD EQUIPMENT

- Divan, dinette, or chairs in front
- 44" double bed
- Recessed vented wall heater
- Apartment size stove with oven
- 4 foot combination electric & ice refrigerator
- Electric hot water heater
- Formica sink top & table top
- Toilet
- Medicine cabinet
- Electric or hydraulic brakes optional
- Break-away switch for brakes
- Heavy duty wheels with 6-ply tires
- Built-in step
- 7-way car connector
- Single butane tank with regulator
- Luggage compartment in rear
- 3" channel iron bumper
- Directional signal lights
- 2 roof vents
- 11' awning rail
- Metal cabinets — wood doors
- Linoleum floor
- Unlined drapes
- 12 volt dome light
- Painted your choice of colors

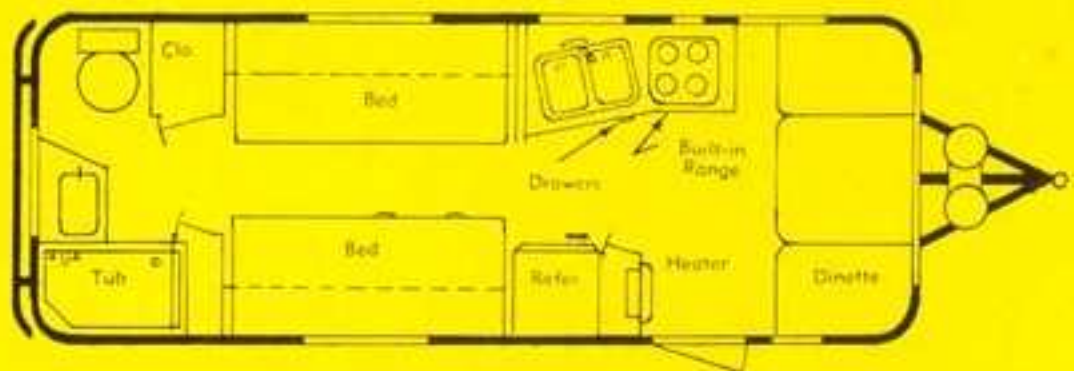
STANDARD EQUIPMENT

- Divan, dinette or chairs in front
- 44" double bed
- Recessed vented wall heater
- Apartment size stove with oven and broiler
- 4-foot combination electric & ice refrigerator
- Electric hot water heater
- Formica sink top & table top
- Toilet, shower & lavatory
- Medicine cabinet
- Electric or hydraulic brakes optional
- Break-away switch for brakes
- Heavy duty wheels with 6-ply tires
- Built-in step
- 7-way car connector
- Single butane tank with regulator
- Luggage compartment in rear
- 3" channel iron bumper
- Directional signal lights
- 35" x 18" picture window in front
- 2 roof vents
- 11' awning rail
- Metal cabinets — wood doors
- Linoleum floor
- Lined drapes
- Bedspreads
- 12 volt dome light
- Painted your choice of colors

REAR BATH MODEL

**the
Clipper
23'**

SIDE BATH MODEL



STANDARD EQUIPMENT

- Divan, dinettes or chairs in front
- Twin beds — box springs and innerspring mattresses
- Recessed vented wall heater
- Deluxe built-in stove
- 8-foot combination ice & electric refrigerator
- Hot water heater
- Formica sink top & table top
- Toilet, tub & lavatory
- Medicine cabinet
- Electric or hydraulic brakes optional
- Break-away switch for brakes
- Heavy duty wheels with 8-ply tires
- Tandem or single axle
- Built-in step
- 7-way car connector

- Double butane tanks with regulator
- Luggage compartment on right side
- Escape window
- 3" channel iron bumper
- Directional signal lights
- 2 roof vents
- 15' awning rail
- Metal cabinets — wood doors
- Linoleum floor
- Lined drapes
- Bedspreads
- 12 volt dome light
- Power wall fan above stove
- Double sinks
- Accordion door in bedroom
- Pull out towel rack

STANDARD EQUIPMENT

- Divan, dinettes or chairs in front
- 52" double bed or twin beds — box springs and innerspring mattress
- Recessed vented wall heater
- Deluxe built-in stove
- 8-foot combination ice and electric refrigerator
- Electric hot water heater
- Formica sink top and table top
- Toilet, shower and lavatory
- Medicine cabinet
- Electric or hydraulic brakes optional
- Break-away switch for brakes
- Heavy duty wheels with 8-ply tires
- Tandem or single axle
- Built-in step
- 7-way car connector

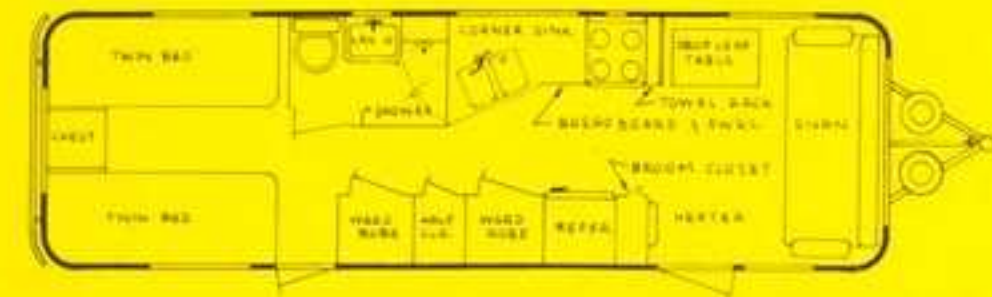
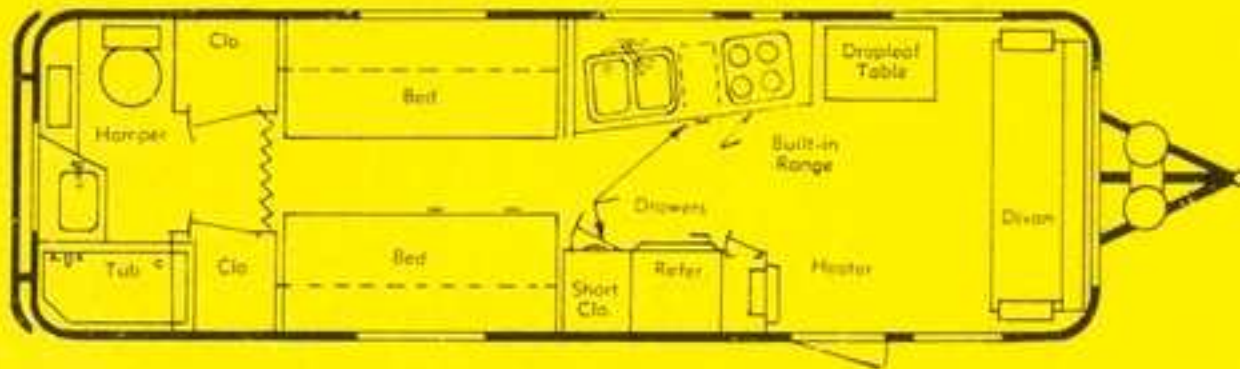
- Double butane tanks with regulator
- Luggage compartment in rear
- Escape window
- 3" channel iron bumper
- Directional signal lights
- 2 roof vents
- 15' awning rail
- Metal cabinets — wood doors
- Linoleum floor
- Lined drapes
- Bedspreads
- 12 volt dome light
- Power wall fan above stove
- Double sinks
- Painted your choice of colors
- Pull out towel rack

REAR BATH MODEL

the Rocket

27'

SIDE BATH MODEL



STANDARD EQUIPMENT

Divan, dinette or chairs in front
Twin beds — box springs and innerspring mattresses
Recessed vented wall heater with automatic heat control
Deluxe built-in stove
8-foot combination ice and electric refrigerator
Hot water heater
Formica sink top and table top
30" x 39" Dropleaf table
Toilet, tub and lavatory
Medicine cabinet
2-wheel brakes — Electric or hydraulic
Break-away switch for brakes
Built-in step
Heavy duty wheels with 6-ply tires
7-way car connector
Double butane tanks with regulator
Luggage compartment
Escape window in rear
3" channel iron bumper
Directional signal lights
3 roof vents
19' awning rail
Metal cabinets — wood doors
Linoleum floor
Lined drapes
Bedspreads
2 — 12 volt dome lights
Power wall fan above stove
Double sinks
Grab rail with light
110 Volt waterproof outlet
Accordion door in bedroom
Pull out towel rack
Painted your choice of colors

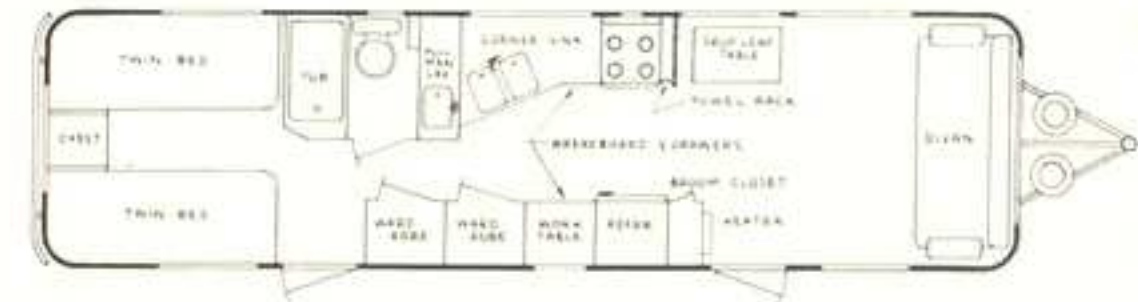
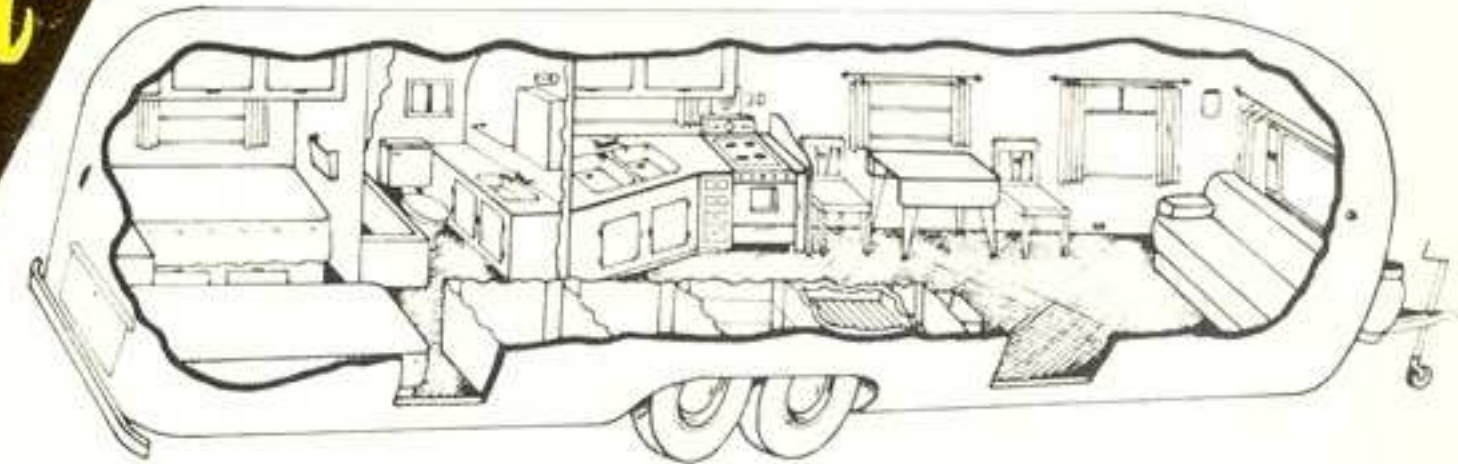
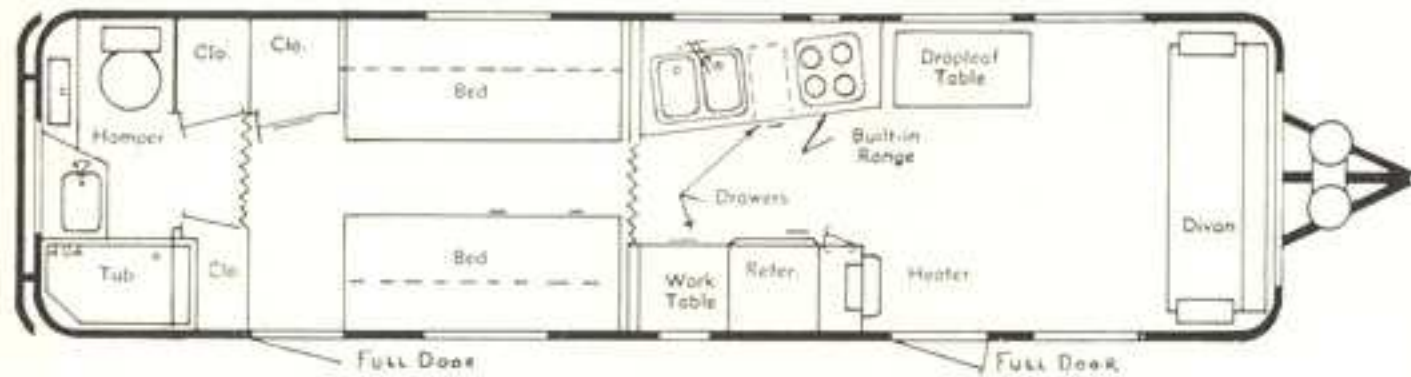
STANDARD EQUIPMENT

Divan, dinette or chairs in front
52" double bed or twin beds — box springs and innerspring mattress
Recessed vented wall heater with automatic heat control
Deluxe built-in stove
8-foot combination ice and electric refrigerator
Electric hot water heater
Formica sink top and table top
30" x 39" dropleaf table
Toilet, shower and lavatory
Medicine cabinet
2-wheel brakes — electric or hydraulic
Break-away switch for brakes
Heavy duty wheels with 6-ply tires
Built-in step
7-way car connector
Pull out towel rack
Double butane tanks with regulator
Luggage compartment
Escape door in rear
3" channel iron bumper
Directional signal lights
3 roof vents
19' awning rail
Metal cabinets — wood doors
Extension shelves on rear lockers
Linoleum floor
Lined drapes
Bedspreads
2 - 12 volt dome lights
Power wall fan above stove
Double sinks
Grab rail with light
110 volt waterproof outlet
Painted your choice of colors

REAR BATH MODEL

the Luxury Liner 31'

SIDE BATH MODEL

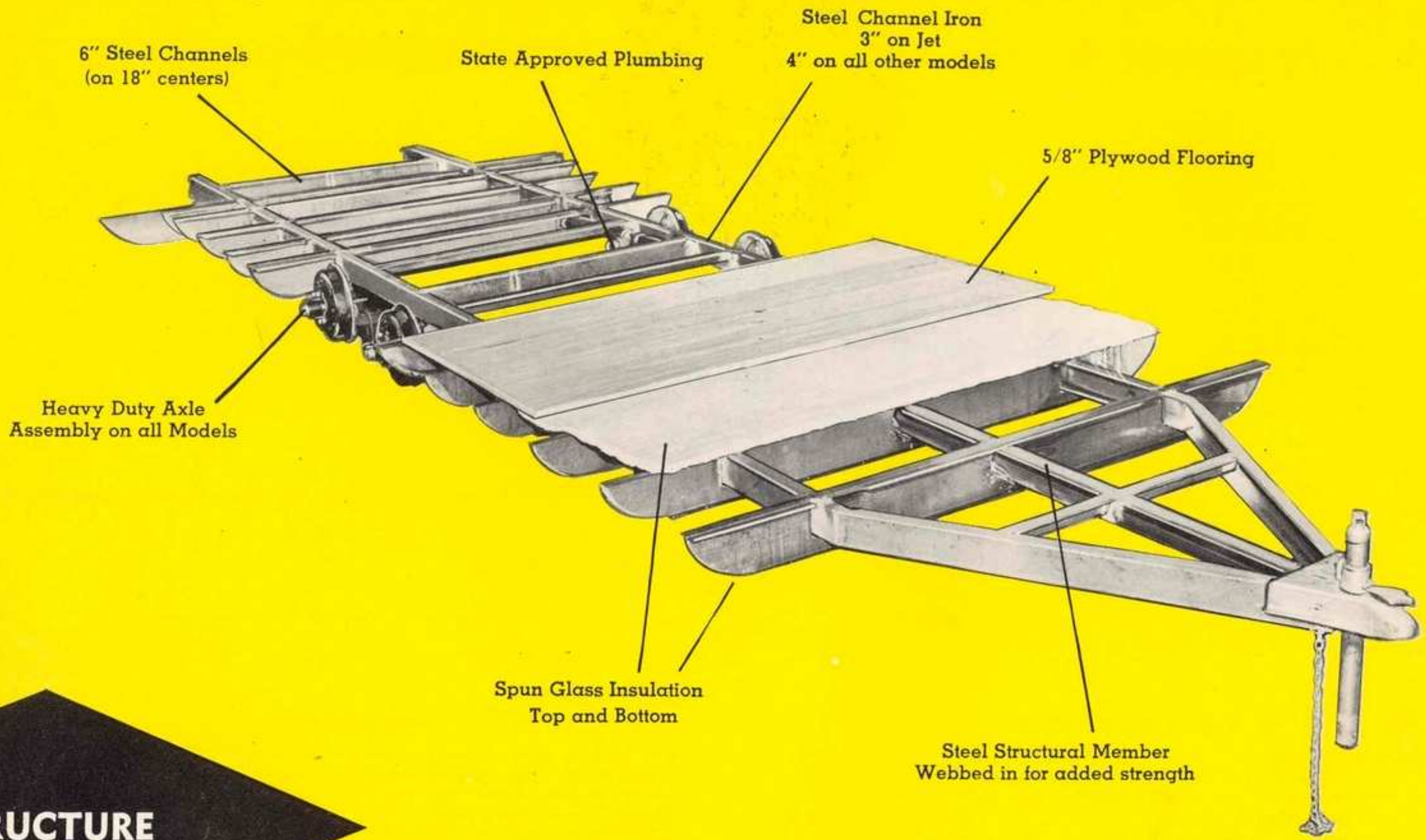


STANDARD EQUIPMENT

- Divan, dinettes or chairs in front
- Twin beds — box springs and innerspring mattresses
- Recessed vented wall heater with automatic heat control
- Deluxe built-in stove — colored
- 8-foot combination ice and electric refrigerator
- Hot water heater
- Formica sink top and table top
- 36" x 39" dropleaf table
- Toilet, tub and lavatory
- Medicine cabinet
- 4-wheel brakes — electric or hydraulic
- Break-away switch for brakes
- Heavy duty wheels with 8-ply tires
- Built-in step
- 7-way car connector
- Double butane tanks with regulator
- Luggage compartment
- Full size door in rear
- Directional signal lights
- 4 roof vents
- 23' awning rail
- Metal cabinets — wood doors
- Birch shelf above front window
- Linoleum floor
- Lined drapes
- Bedspreads
- 2 - 12 volt dome lights
- Power wall fan above stove
- Double sinks
- Grab rail with light
- 110 volt waterproof outlet
- Accordion door in bedroom
- Pull out towel rack
- Painted your choice of colors

STANDARD EQUIPMENT

- Divan, dinettes or chairs in front
- 52" double bed or twin beds — box springs and innerspring mattresses
- Recessed vented wall heater with automatic heat control
- Deluxe built-in stove
- 8-foot combination ice and electric refrigerator
- Electric hot water heater
- Formica sink top and table top
- 36" x 39" dropleaf table
- Toilet, tub and lavatory
- Medicine cabinet
- 4-wheel brakes — electric or hydraulic
- Break-away switch for brakes
- Heavy duty wheels with 8-ply tires
- Built-in step
- 7-way car connector
- Double butane tanks with regulator
- Luggage compartment
- Painted your choice of colors
- Full size door in rear
- 3" channel iron bumper
- Directional signal lights
- 4 roof vents
- 23' awning rail
- Metal cabinets — wood doors
- Shelf above rear window
- Birch shelf above front window
- Linoleum floor
- Lined drapes
- Bedspreads
- 2 — 12 volt dome lights
- Power wall fan above stove
- Double sinks
- Grab rail with light
- 110 volt waterproof outlet
- Pull out towel rack



STRUCTURE

ALL MODELS CARRY STATE APPROVED PLUMBING

Undercarriage completely concealed with an all metal riveted underskin for protection.

Special method of insulating trailer frames and wheel boxes.

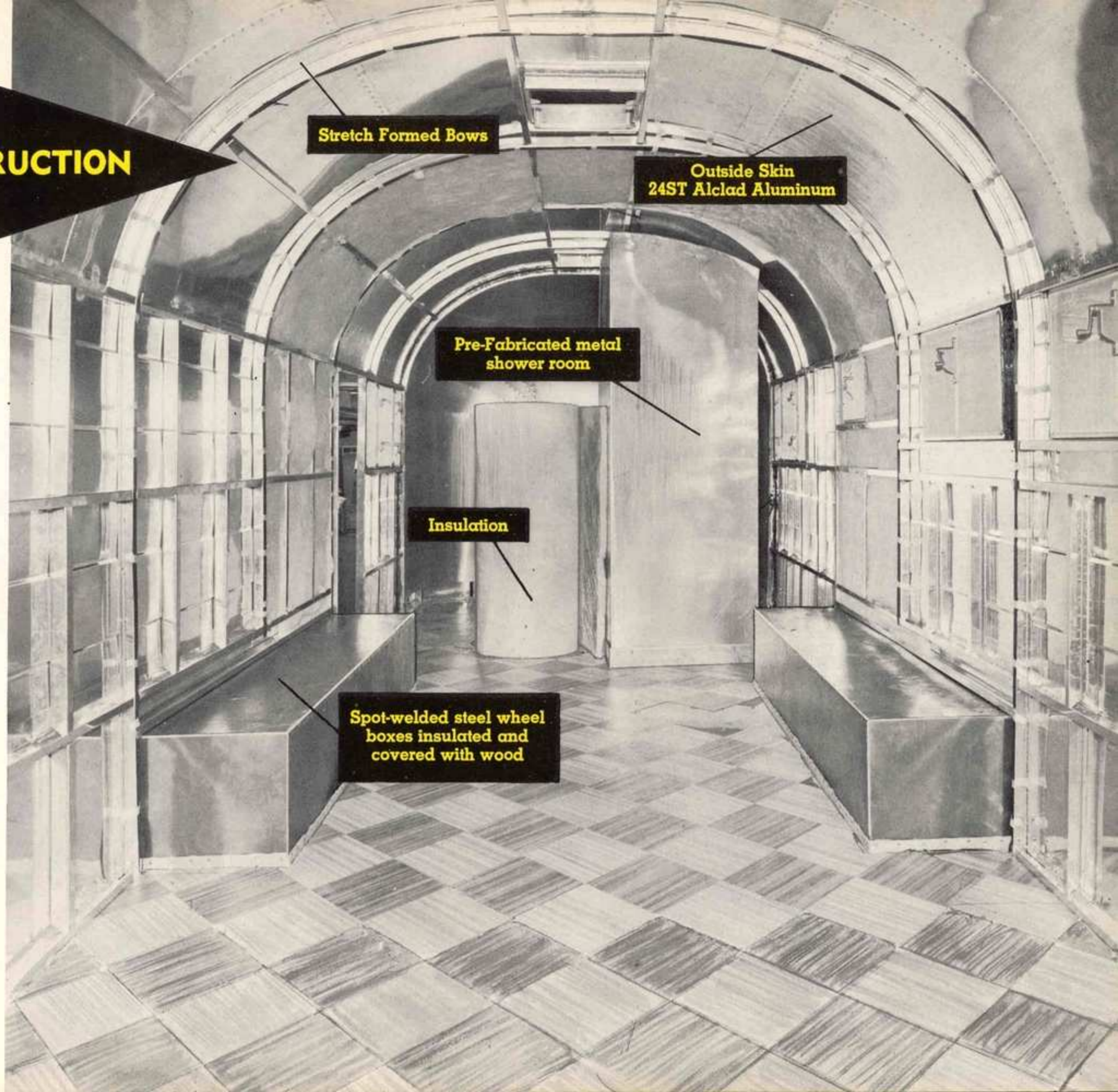
All models have insulation in floor — metal wheel housings have insulation over top, then covered with plywood box.

BODY CONSTRUCTION

The body of the SILVER STREAK TRAILER is two complete metal shells one inside the other, separated by a blanket of plastic treated fibre glass insulation, riveted together as one unit on extruded aluminum stretch formed bows and stringers.

Electrical wiring used in all models is 12-gauge Romex wire with 10-gauge from electrical inlet to breaker box. Breaker boxes vary with trailer sizes.

Outside skin is of 24ST Alclad Aluminum. Inside skin and cabinets are all metal of our own unique design for lightness. Door headers and frames are also stretch formed from extruded aluminum "Z" sections.



Stretch Formed Bows

Outside Skin
24ST Alclad Aluminum

Pre-Fabricated metal
shower room

Insulation

Spot-welded steel wheel
boxes insulated and
covered with wood

SILVER STREAK

TRAILER COMPANY

2319 N. Chico

• El Monte, Calif.

•

Telephones: Gilbert 4-2646 and
Cumberland 3-6372

DEALER

SPECIFICATIONS

| | 19' | 23' | 27' | 31' |
|--------------------|-------|-------|-------|-------|
| Overall Length | 19'9" | 23'9" | 27'9" | 31'9" |
| Body Length | 16' | 20' | 24' | 28' |
| Overall Height | 8'7" | 8'7" | 8'7" | 8'7" |
| Inside Height | 6'8" | 6'8" | 6'8" | 6'8" |
| Overall Body Width | 7'4" | 7'4" | 7'4" | 7'4" |
| Inside Width | 7'1" | 7'1" | 7'1" | 7'1" |
| Overall Weight | 2440 | 3380 | 4070 | 4780 |
| Hitch Weight | 220 | 300 | 300 | 350 |

SPECIFICATIONS SUBJECT TO CHANGE WITHOUT NOTICE.