

1962

**SILVER STREAK**

TRAILER COMPANY

2319 N. Chico Ave., El Monte, California





**SILVER STREAK**

TRAILER COMPANY

2319 N. Chico Ave., El Monte, California

*30 years of trailer building* experience has made Silver Streak Trailers outstanding for traveling and living. Select any model and be confident of many years of traveling comfort, plus a protection to your investment.

**IMPORTANT FEATURES FOR ALL MODELS:**

All windows are louvered except front and rear

Toilet, shower and lavatory

Sectional dinette seat with fold-away table

Recessed vented wall heater

Deluxe built-in 4-burner stove with oven

8' electric and ice combination refrigerator

Formica sink top and table top

Medicine cabinet

Heavy duty truck type wheels and tires

7-way car connector

Built-in sewer hose tube

Built-in fold-away step

Directional reflector type signal lights

Full length awning rail

Hardwood doors and drawer fronts

Inlaid linoleum floors

Lined drapes and form fitted bedspreads

Power wall fan above stove

12 volt dome lights

Pressure glass lined water tank

6 gallon electric hot water heater

Electric or hydraulic brakes

Outside waterproof electrical outlet

4" form fitted channel iron bumper welded to frame

Large front picture window

Self Contained Units Available

SPECIFICATIONS SUBJECT TO CHANGE WITHOUT NOTICE.

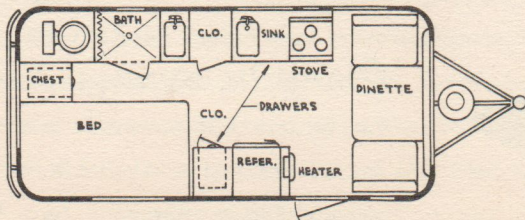
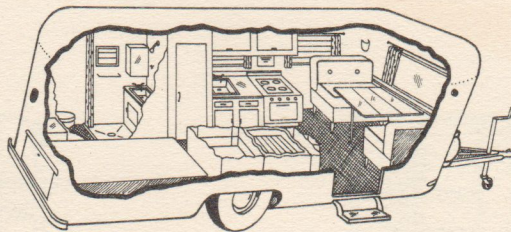
Jet

20'

## TOILET & SHOWER MODEL

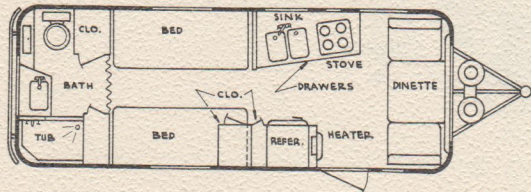
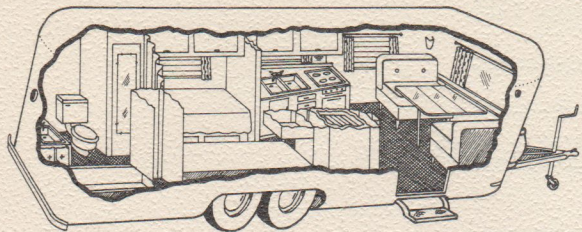
*Are you ready . . .*  
to go fishing, hunting or  
take the family on a week  
end trip.

Sleeps 4. Large enough to  
be comfortable — still light  
enough to tow with a light  
American car. Complete  
kitchen, toilet, with or with-  
out shower and lavatory.  
Double bed box spring and  
innerspring mattress.

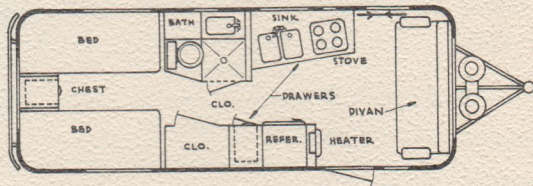
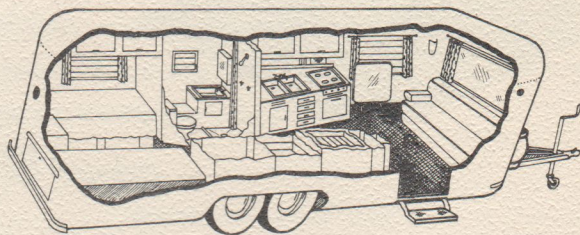




## REAR BATH MODEL



## SIDE BATH MODEL



Clipper

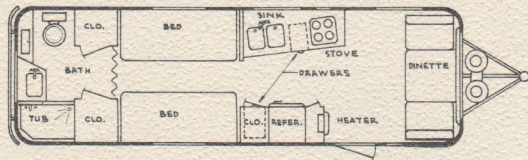
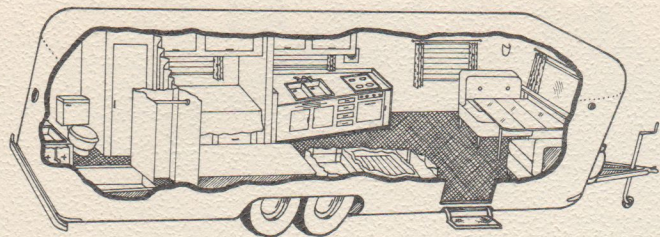
24'

Change the scenery as often as you wish without sacrificing one bit of comfort by traveling the modern way in a new Silver Streak Clipper.

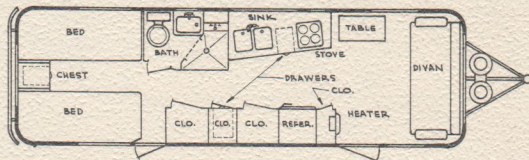
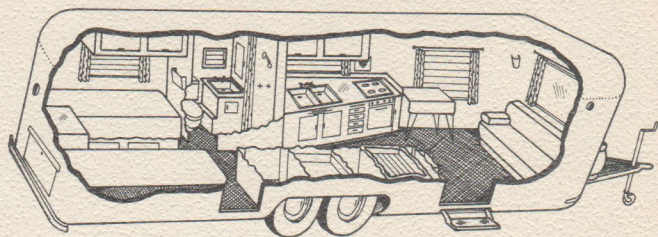
Added features — Available with single axle or tandem axles, 2-wheel brakes, exhaust fan in rear vent, twin or double beds — box springs and innerspring mattress. Rear bath models have tub and shower.



## REAR BATH MODEL



## SIDE BATH MODEL



*Life will be colorful and gay, never dull and confining if you make this Silver Streak Rocket your traveling home.*

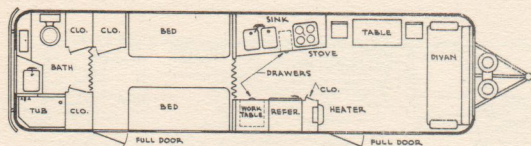
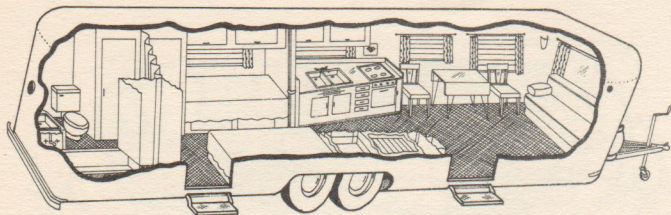
You have a choice of front room furniture — Fold-away extension table with sectional divan, a dinette combination or divan and 3 position table. Beautiful interior finish. Exhaust fan in front and rear roof vents. Twin or double bed. Box springs and innerspring mattress. Accordion door in rear bath model closing off bath room. 4-wheel brakes. Rear bath models have tub and shower.

Rocket

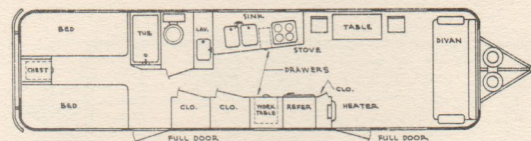
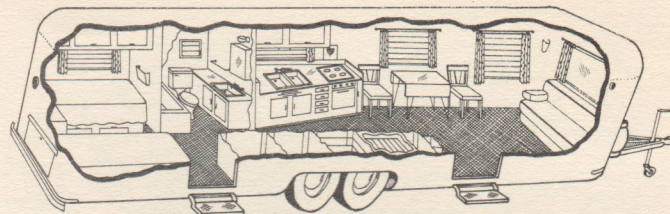
28'



## REAR BATH MODEL



## SIDE BATH MODEL



*All the comfort and luxury of home.* Hook your car to this elaborate portable home. Follow the season. Large enough to be comfortable — light enough to tow with any medium size car.

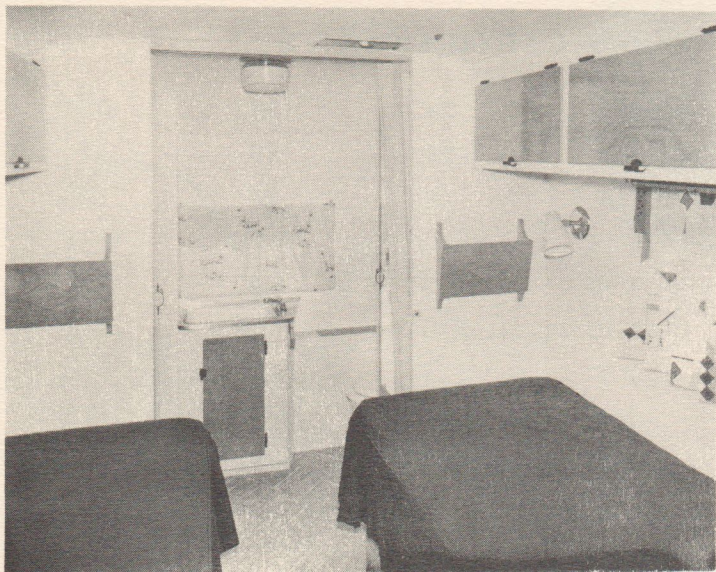
Added features — tub and shower.

Front room furniture: Divan with drop-leaf table: Birch shelf over front window. Exhaust fans in front and rear roof vents. Rear bath models have 2 accordian doors. 4-wheel brakes.

Luxury Liner

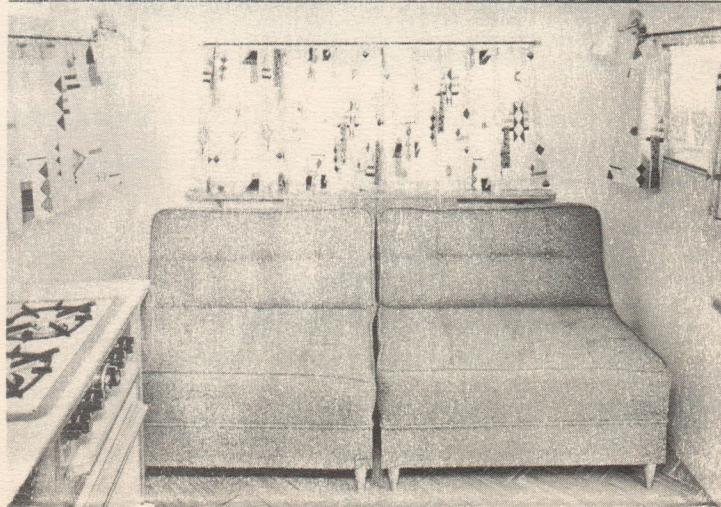
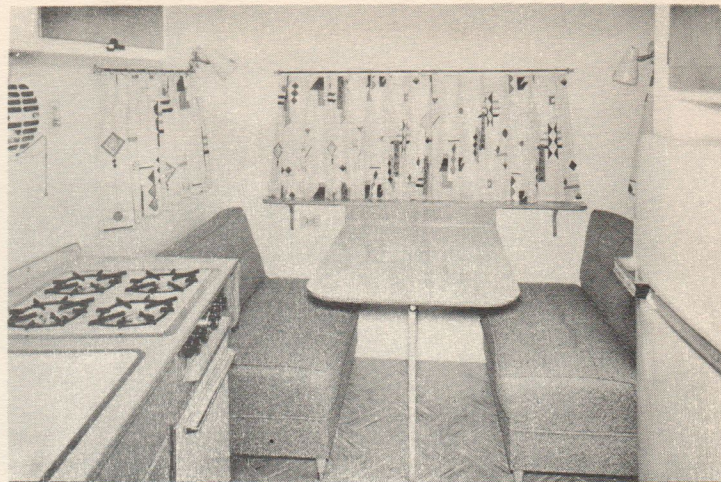
32'





**Twin Bed, Rear Bath Model**

**3 Way Combination  
All in One  
Dinettes, Divan, or 40" bed.**





# SILVER STREAK

TRAILER COMPANY

## SPECIFICATIONS

	20'	24'	28'	32''
Overall Length	20'	24'	28'	32'
Body Length	16'	20'	24'	28'
Overall Height	8' 11"	8' 11"	8' 11"	8' 11"
Inside Height	6' 8"	6' 8"	6' 8"	6' 8"
Overall Body Width	7' 10"	7' 10"	7' 10"	7' 10"
Inside Width	7' 7"	7' 7"	7' 7"	7' 7"
Overall Weight	2560	3470	4180	4870
Hitch Weight	280	350	350	390

Price and specifications subject to change without notice.

DEALER



Silver Streak Trailer Co.  
 2319 North Chico Avenue  
 El Monte, California

Phone: 444-2646  
 283-6372  
 Effective: Oct. 1, 1962

DEALER'S COST F.O.B. EL MONTE

COMPACT SABRE LINE

SELF-CONTAINED

17 ft SABRE (See Brochure for Specifications) . . . . .	\$ 2445.00
22 ft SABRE - Single Axle (See Brochure for Specifications) . . . . .	3226.95
22 ft SABRE - Tandem Axle (See Brochure for Specifications) . . . . .	3327.95

CHANGES OR ADDITIONS NOT AVAILABLE IN SABRE LINE

SILVER STREAK DELUXE LINE

SELF-CONTAINED

DELUXE

20 ft JET - Side Bath-Double Bed or Rear Bath-Gaicho . . . . .	\$ 3445.00	\$ 2965.00
24 ft CLIPPER - Tandem Axle - Rear Bath . . . . .	4075.00	3595.00
28 ft ROCKET - Tandem-4-Wheel Brakes-Rear or Center Bath . . . . .	4455.00	3975.00
32 ft LUXURY LINER - Tandem-4-Wheel Brakes-Rear or Center Bath . . . . .	5000.00	4520.00
35 ft NP-35 - Tandem Axle - 4-Wheel Brakes . . . . .	5300.00	4820.00

All Deluxe models available with either twin or double bed except 20 ft JET

ITEMS BELOW ARE INCLUDED IN SELF-CONTAINED TRAILERS

Butane refrigerator . . . . .	\$ 160.00	7-gal. butane tanks . . . . .	\$ 18.00
Marine toilet w/holding tank . . . . .	106.50	12V battery in case . . . . .	23.80
Butane hot water heater . . . . .	70.50	12V air compressor . . . . .	59.40
Butane light . . . . .	15.80	12V lights additional . . . . .	26.00

OPTIONAL EQUIPMENT AVAILABLE

TV antenna . . . . .	\$ 20.00	Fan in roof vent 12V . . . . .	\$ 26.50
TV antenna with rotary . . . . .	30.00	Radio aerial . . . . .	8.50
Extra drain hose carrier . . . . .	14.00	Extra roof vent . . . . .	18.00
Fan in roof vent 110 V . . . . .	19.00	Water purifier . . . . .	59.50
Canvas bunks, each . . . . .	25.00	Tire rack w/special bumper . . . . .	40.00
Built-in bunks, each . . . . .	50.00	Tire, tube & wheel 6 or 8 ply . . . . .	42.00
Alum. awning over front window. . . . .	40.00	1-ton refrig. air conditioner . . . . .	365.00

CREDIT ON ITEMS OMITTED WILL BE ALLOWED ON MATERIAL ONLY.

THERE WILL BE AN ADDITIONAL CHARGE OF 20% ON ALL CHANGES MADE AFTER TRAILER IS IN PRODUCTION OR COMPLETED.



DEALER'S COST

STANDARD EQUIPMENT AS INDICATED

	<u>20'</u>	<u>24'</u>	<u>28'</u>	<u>32'</u>	<u>35'</u>
22-gal. glass-lined pressure water tank . . . . .	Std	Std	Std	Std	52.00
Wall thermostat control . . . . .	25.00	25.00	Std	Std	Std
Built in 4-burner cook range w/broiler . . . . .	Std	Std	Std	Std	Std
Wall heater blower . . . . .	20.00	20.00	Std	Std	Std
Electric hot water heater . . . . .	Std	Std	Std	Std	Std
Built in drain hose carrier . . . . .	Std	Std	Std	Std	Std
Double waterproof outlet . . . . .	Std	Std	Std	Std	Std
Headboard in Rear Bath models . . . . .	N/A	Std	Std	Std	Std
25' drop cord w/connector . . . . .	Std	Std	Std	Std	Std
Electric & ice combination refrigerator . . . . .	Std	Std	Std	Std	N/A
Double 5-gal. butane tanks w/large regulator. . . . .	Std	Std	Std	Std	Std
TV shelf in Rear Bath models . . . . .	N/A	Std	Std	Std	Std
TV Jack . . . . .	4.59	Std	Std	Std	Std
Shelf above front window . . . . .	Std	Std	Std	Std	Std
Hood w/fan over cook range . . . . .	Std	Std	Std	Std	Std
Fan in roof vents . . . . .	.RB-1-Std	1-Std	2-Std	2-Std	2-Std
Bedspreads . . . . .	.SB-Std	Std	Std	Std	Std
Drapes . . . . .	Std	Std	Std	Std	Std
4-wheel brakes Hydraulic or Electric . . . . .	N/A	70.00	Std	Std	Std
Accordion door center or side bath models . . . . .	22.50	22.50	1-Std	1-Std	1-Std
Adams Forced Air Furnace . . . . .	N/A	N/A	90.00	90.00	Std

PRICES AND SPECIFICATIONS SUBJECT TO CHANGE WITHOUT NOTICE.