

SILVER STREAK

OWNER'S MANUAL

Researched and produced by Simms Advertising, Placentia, Ca.

10

11

12

INTRODUCTION

The Silver Streak Trailer Company has prepared this Instruction Manual to ensure that the buyer of a new Silver Streak will derive the most efficient operation of his trailer home. This manual includes descriptions and instructions on the use and operation of the various systems and appliances.

For more detailed information regarding a specific appliance or accessory, kindly refer to the manufacturer's instruction booklet. May we remind you to make sure that all individual warranty cards are mailed to the respective manufacturers to validate any repairs or replacements that may be required.

If any questions should arise regarding any function of your new trailer home, please contact your Silver Streak dealer.

Silver Streak maintains a continuous product improvement program and reserves the right to modify specifications and prices without notice or obligation.

Drill out internal rivets with #31 (0.120) drill bit.

CONTENTS

| | Page |
|---|-------|
| Owner's Log | VIII |
| Warranty and Service | VII |
| Brake System | 1 |
| Tires | 2 |
| Load Chart | 4 |
| Trailer Hitching | 6 |
| Pre-Travel Check List | 9 |
| Towing Tips | 10 |
| Trailer Leveling | 11 |
| Exterior Identification | 12 |
| T.V. Antenna | 14 |
| LPG System | 18 |
| Refrigerator | 19 |
| Furnace | 23 |
| Air Conditioner | 27 |
| Range/Oven | 29 |
| Microwave Oven | 31 |
| Water Heater | 33 |
| Water System | 34 |
| Drain/Waste System | 39 |
| Electrical System | 41 |
| Battery | 44 |
| Electrical Troubleshooting | 46 |
| Lubrication and Maintenance | 47 |
| Winterizing | 48 |
| Wiring, LPG, Water and Waste Schematics | 49-56 |



SILVER STREAK WARRANTY FACTS

LIMITED WARRANTY (12 MONTHS)

Silver Streak warrants for its trailers that it will repair or replace any parts, except tires and batteries, found under normal use to be defective in factory materials or workmanship within one (1) year of the date of original purchase.

All we require is that you properly operate and maintain your trailer and that you **RETURN FOR WARRANTY SERVICE TO YOUR SELLING DEALER** or in the event you are traveling, moved a long distance or need emergency repairs, to the Silver Streak factory or any Silver Streak dealer or Silver Streak approved service facility.

There is no other express warranty on this trailer.

Any implied warranty of merchantability of fitness is limited to the twelve (12) month duration of this written warranty.

To the extent allowed by law, neither Silver Streak nor the selling dealer shall have any responsibility for loss of use of the vehicle, loss of time, inconvenience, commercial loss or consequential damages.

Some states do not allow limitations on how long an implied warranty lasts or the exclusion or limitation of incidental or consequential damages, so the above limitations may not apply to you.

This warranty gives you specific legal rights, and you also may have other rights which vary from state to state.

TIRE AND BATTERY ADJUSTMENT

Tires and batteries are subject to separate service adjustments offered by the manufacturer, not Silver Streak or the selling dealer. If you have a tire or battery problem, take your trailer to a representative of the tire or battery manufacturer. Your selling dealer or Silver Streak will help you discuss tire and battery problems with the manufacturer's representative if you need assistance.

FOLLOWING IS A LIST OF FREQUENTLY ASKED WARRANTY QUESTIONS:

Q. WHAT SHOULD I DO TO OBTAIN WARRANTY SERVICE?

A. **The dealership where you purchased your Silver Streak has the responsibility for performing warranty repairs; therefore, take your trailer to that dealership.** Your dealer will be required to contact Silver Streak prior to performing a warranty repair to enable evaluation of the repairs required, and for claim reimbursement approval.

If you are traveling, have moved a long distance, or need emergency repairs, the Silver Streak factory, any Silver Streak dealer, or Silver Streak authorized service facility can do the warranty work. **FACTORY APPROVAL PRIOR TO COMMENCEMENT OF THE WORK IS REQUIRED.**

If you encounter a service problem, refer to the service assistance section in your Owners Manual for suggested actions.

Q. IS THERE A BREAK-IN ADJUSTMENT PERIOD?

A. Yes, service adjustments that are refinements in fit, alignment and performance, as required in normal use, will be provided free of charge to the owner during the first 90 days as follows:

Adjustment in fit of windows, entry door, trunk door and other compartment doors as necessary.

Brake adjustment.

Adjustments to appliances to ensure proper performance.

After 90 days such service adjustments will be charged to the owner, unless they are required because of defects in materials, all of which are covered for twelve (12) months from date of original purchase.

Q. WHAT ITEMS ARE NOT COVERED BY THE WARRANTY?

A. Silver Streak will correct all defects in material and workmanship, except tires and batteries. The owner is responsible for repairs caused by:

Accident, fire or other casualty damage.

Modifications, changes, alterations, repairs or replacements, except such as have been made by Silver Streak factory, selling dealer, or other Silver Streak authorized dealer or service facility in fulfilling the obligations of this warranty.

Damage caused by overloading, misuse, natural or normal deterioration, or changes affecting the stability of the trailer.

For assistance call or write:

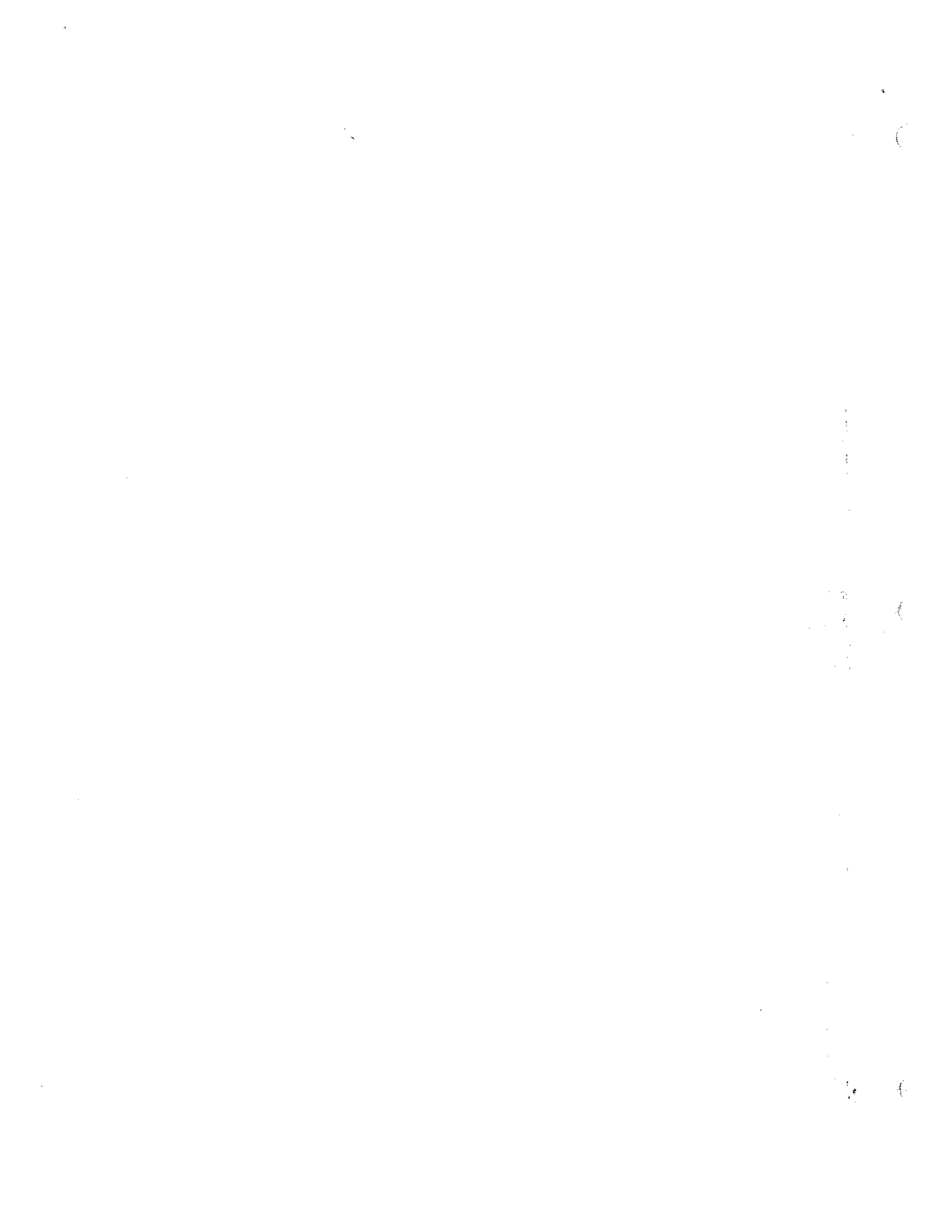
Silver Streak Trailer Company

Parts and Service Department

2319 No. Chico Avenue

So. El Monte, CA 91733

(213) 444-2646



W/O. 9545
S/N 2188

OWNER'S LOG

Trln. Ser. No.
SST-ERT-79-2188

| ITEM | MANUFACTURER | MODEL | SERIAL NO. |
|---|---|--------------------------|---|
| WATER HEATER | American Appliance | DS 16 | C-986230 |
| FURNACE | COLEMAN | 4334 749 | 017963511 |
| RANGE | MAGIC CHEF | BT22JKATVX | H-28775139 |
| REFRIGERATOR | Boys-Mod. R M100 ser. No. 808 0337 DOMETIC | Refrigerant unit 610A | 937 750-0755 |
| Air CONDITIONER | Domestic 13500 BTU EVANS | RT-212001 | 36008 ✓ |
| CONVERTER | NEW MARK | DCV 50F | — |
| STEREO | Audionex | | 9041283 |
| VACUUM | SMALL HANDLER | | 23765 |
| COMPRESSOR | Intercompressor | | — |
| REGULATOR | FISHER | | 912 |
| BUTANE BOTTLES | WORTHINGTON | | 0032953E ✓ 0033002E ✓ |
| TIRES 6 ply Tread. 4 ply sidewall. Load R-D, 8.P.R. | Goodyear Travel Trailer HI-Miler 700-15LT | | 230110 GR28 228575 GR28 230110 GR28 230109 GR28 230110 GR28 |
| | | | |
| | | | |
| | | | |
| | | | |
| | | | |
| | | | |
| | | | |
| | | | |
| | | | |
| | | | |
| | | | |
| | | | |
| | | | |
| | | | |
| | | | |
| | | | |
| | | | |
| | | | |
| | | | |
| | | | |
| | | | |
| | | | |
| | | | |

Clearance Light Cats Eye #94

BRAKE SYSTEM

The Kelsey Hayes Brakes installed on your trailer are operated by 12-volt current from the towing vehicle and must be hooked up so that you have an integral system with the towing vehicle brakes.

To prevent problems and to ensure satisfactory braking action, A Kelsey Hayes Brake Controller (or equivalent) and selective resistor should be installed in line with the controller in the towing vehicle to synchronize both sets of brakes (trailer and towing vehicle). The controller is designed to actuate the trailer brakes just before the towing vehicle brakes. To adjust, turn the handle counter-clockwise to actuate trailer brakes earlier, and clockwise to actuate trailer brakes later. The controller will hold this setting. The selective resistor can be adjusted to achieve greater or less braking, as required. The adjustment of the controller and the selective resistor should be checked by your dealer during regular maintenance inspection.

If an accidental separation of the trailer and towing vehicle occurs, the breakaway switch (see Trailer Hitching Section) will set and lock the trailer brakes to bring the trailer to a stop. This switch is actuated when the small pin in front of the unit is pulled out by the wire attached to the pin and to the towing vehicle. The pin should be kept lubricated.

We recommend that your brake system be checked and adjusted by a certified service center.

1 brake - 3.2 Ω measured

2 brakes - 1.6 Ω

3 brakes - 1.07 Ω

4 brakes - 0.8 Ω

Actual Res. from center

*Pin to large ground
pin measures*

0.9 Ω

to 1.0 Ω 1/31/93

46-28-93



Kelsey Hayes
Trailer Brake Controller

Whl's Western
15x7, 1850 lbs

TIRES

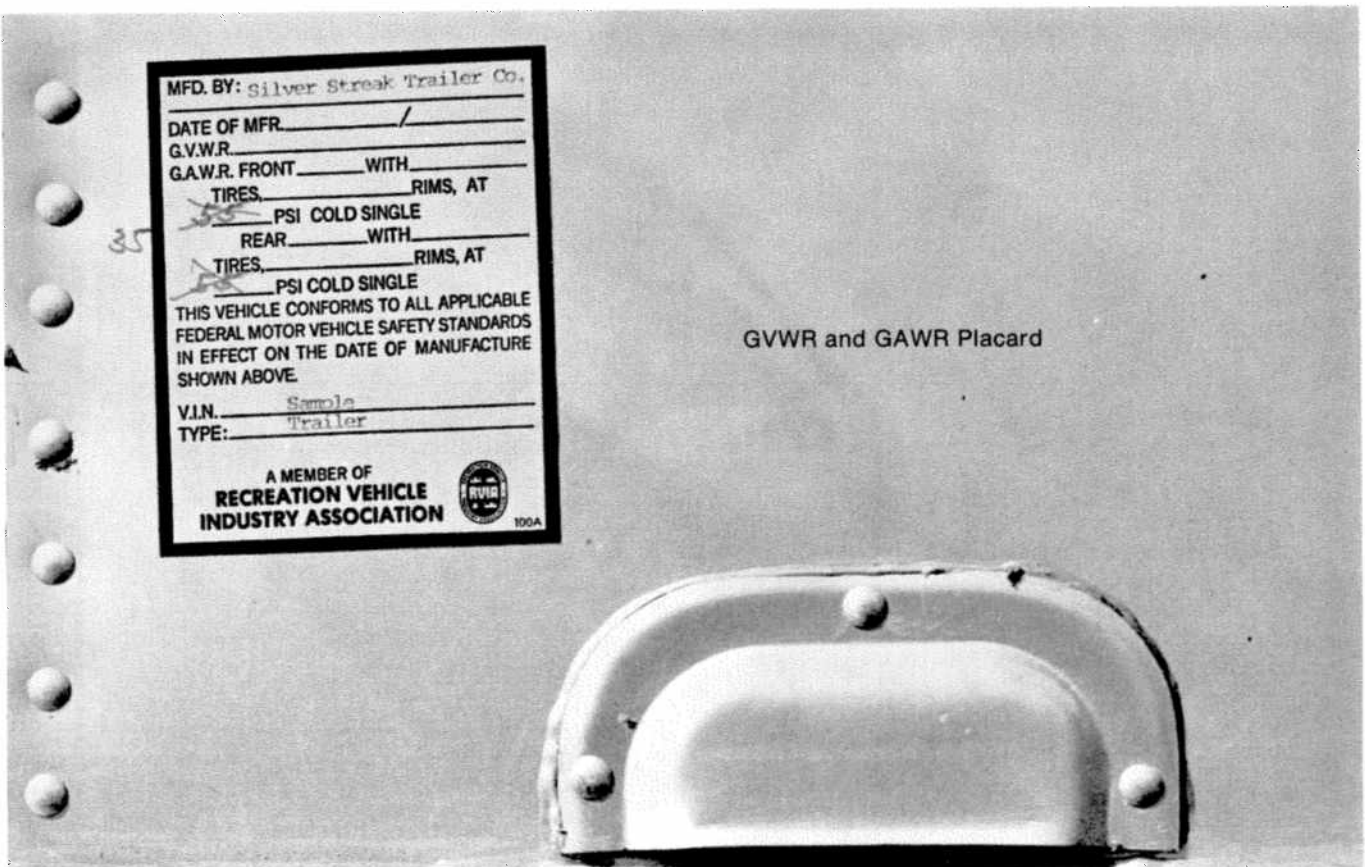
Your Silver Streak is equipped at the factory with name-brand trailer tires. Silver Streak dealers cannot make adjustments for tire defects. This can only be done by the tire manufacturer. Check the local telephone directory for the nearest dealer.

To secure maximum performance from your tires, check the air pressure often, but only when tires are cold. *Do not bleed out air when tires are hot.* For specific tire pressures, refer to the following table:

| Size | Rating | Load Range | Air Pressure |
|------------------------------|--------|------------|--------------|
| X 7.00 x 15 LT | 8-ply | D | 60-psi |
| After Apr. '84 → P235-75R-15 | | B | 35 psi |

It is also important to periodically check the tightness of the lug bolts. Tighten with a cross-type lug wrench. Do not over torque mag wheel. See manufacturers instructions.

Per Federal regulations, your trailer is placarded on the front roadside area with a gross vehicle weight rating (GVWR) and a gross axle weight rating (GAWR). The GVWR is the maximum trailer weight allowed when trailer is being towed. The GAWR is the maximum load allowed on each axle when trailer is being towed. Refer to the Load Chart for the amount of weight that may be added to your trailer. Personal cargo should be distributed evenly; heavy items should be placed near axles. The tongue weight should be 10 to 15 percent of the trailer's loaded weight.



TIRE CHANGING

On tandem axle models, a flat tire may be changed without a jack. On trailer side with flat tire, simply pull good wheel onto wood block at least 6 inches high and 3 feet long. This will allow the necessary clearance to remove wheel.

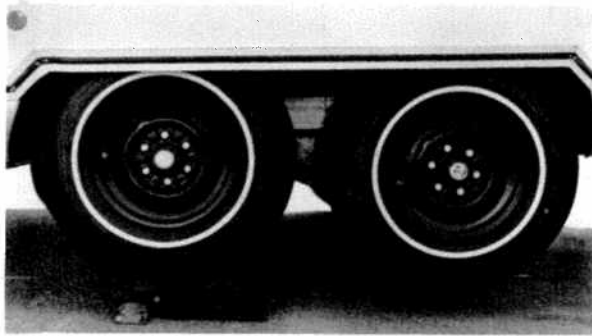


Figure 1.
Pull good wheel onto wood block

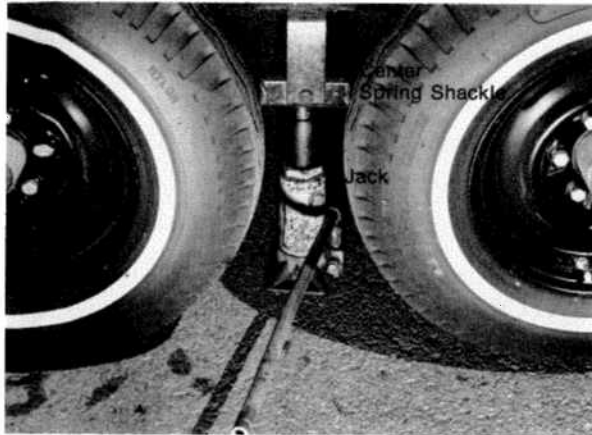


Figure 2

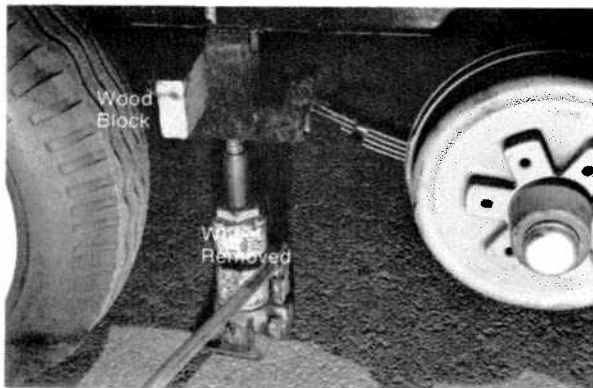


Figure 3

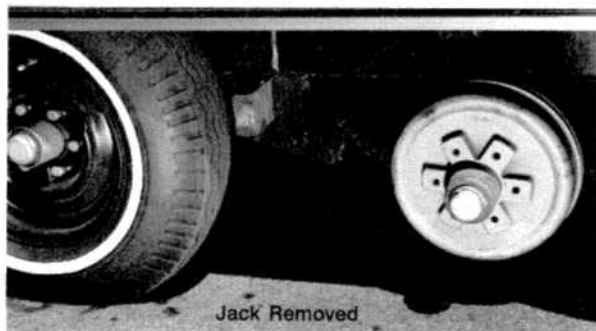


Figure 4

If a spare tire is not available, the flat tire may be removed and the trailer safely towed for a distance not to exceed 100 miles at a maximum speed of 30 mph by performing the following:

- Place jack under center spring shackle and raise trailer until flat tire can be removed.
- Insert wood block between rear shackle and frame.
- Lower jack until frame rests on wood block and jack is free.

A four-wheel unit can now be towed on three wheels.



Figure 5
Trailer Can Be
Towed With 3 Wheels

LOAD CHART

| Model | K-H Axles GVWR | Factory Weight (Supreme Models) | Allowable Additional Weight* |
|-------|-------------------|------------------------------------|---------------------------------|
| 2600 | 8,000 lb | 5680 lb | 2,320 lbs. |
| 2800 | 8,000 lb | 6040 lb 5420 | 1,960 lbs. |
| 3000 | 8,000 lb | 6,360 lb | 1,640 lbs. |
| 3200 | 8,000 lb | 6,820 lb | 1,180 lbs. |

*Allowable additional weight includes all options and accessories, waste, food supplies, clothing, and other personal cargo.

VARIABLE WEIGHTS

| | | |
|---------------------------|--------------------------|-----------------------------|
| LPG (full tank) | 50-gal 20-gal | 124 lb. 83 lb |
| Water Tank (all models) | 34-gal | 284 lb |
| Water Heater (all models) | 10-gal | 83 lb |
| *Septic Tank | 22-gal | 184 lb |
| *Gray Water Holding Tank | 30-gal | 250 lb |

*These capacities subject to change from time to time due to supply availability and the possible changes in frame or floor designs.

POWER JACK

OPERATION

- The power jack utilizes a momentary spring return switch placed conveniently at the top of the motor housing.
- When the power jack reaches the end of its travel, either raising or lowering, a built-in torque limiter goes into operation with a clicking noise. **STOP IMMEDIATELY** and reverse switch for 2 seconds only.
- This torque limiter permits the final drive gear to slip and thus protects the unit. **PROLONGED OPERATION OF THE TORQUE LIMITER MAY CAUSE EXCESSIVE WEAR, THUS REDUCING THE LIFTING CAPABILITY OF THE JACK.**
- If an electrical failure should ever occur, you may remove the power head by loosening the two allen set screws holding it to the jack post. Once removed, the emergency handle may be inserted into the jack post coupling and the jack can be raised or lowered.
- When lifting both trailer and tow vehicle, use at least 6 inches of blocking and leave tow vehicle transmission in "neutral." **DOLLY WHEELS ARE NOT RECOMMENDED.** Don't forget to reverse switch for 2 seconds after raising load to required height.
- Once a year, the power head should be removed and a liberal amount of grease (preferably a grease with high melting point) applied directly to the coupling on which the drive pin rests. **DO NOT POUR OIL** into top of jack post. This may damage brake and cause jack to lower out of control.
- When replacing, put drive pin in slot then twist motor to align with slot on outer tube. Then tighten set screws. Do not strip threads.
- Once every two years, the housing cover should be removed and the gears inspected for proper lubrication. Remove 4 screws and top around edges of housing to free the cover — **DO NOT INSERT** screwdriver blade — this may damage mating surfaces. Before replacing cover, clean mating surfaces and apply light coating of sealing compound. If lubrication is needed, use LUBRIPLATE 630-AA or comparable material.

HITCHING TRAILER

The following procedure is to be followed to hitch trailer to towing vehicle.

- Remove safety pin and raise locking lever on trailer hitch (Figure 1).
- Using the power jack with which your Silver Streak comes equipped, raise trailer hitch until there is clearance for the hitch ball to slide under (Figure 2).
- Using the power jack, lower trailer hitch onto the hitch ball (Figure 3).
- Close locking lever and insert safety pin.
- Raise trailer and car to full height of power jack ^{using 6" of block up} and attach leveling bars (Figures 3 and 4).
- Lower trailer and car. The hitch ball should be level to trailer hitch.
- Plug in electrical connector and check running lights, directional lights, and brake stop lights (Figure 5).
- Route breakaway switch cable through frame and under coupler, and attach to welded portion of hitch or car-frame, but never to the removable ball mount.
- Attach sway control bar (customer-furnished) by sliding one end onto ball mount and the other end to bracket on hitch (Figure 6).
- Cross the safety chains under the hitch and inside the sway control bar and attach to the towing hitch (Figure 7).
- Raise the power jack completely for maximum ground clearance.

CAUTION: Never tow your trailer with the jack down.

If towing vehicle is equipped with adjustable load leveling air shocks, it must first be loaded with typical luggage and passengers and brought back to level. Then attach trailer and adjust the load leveling bars. If this is not done, the rear wheels will be overloaded.

The hitch ball on towing vehicle should be installed at a height of 23 inches to the top of the hitch ball when vehicle is unloaded. If it is installed lower, tailwagging may occur.

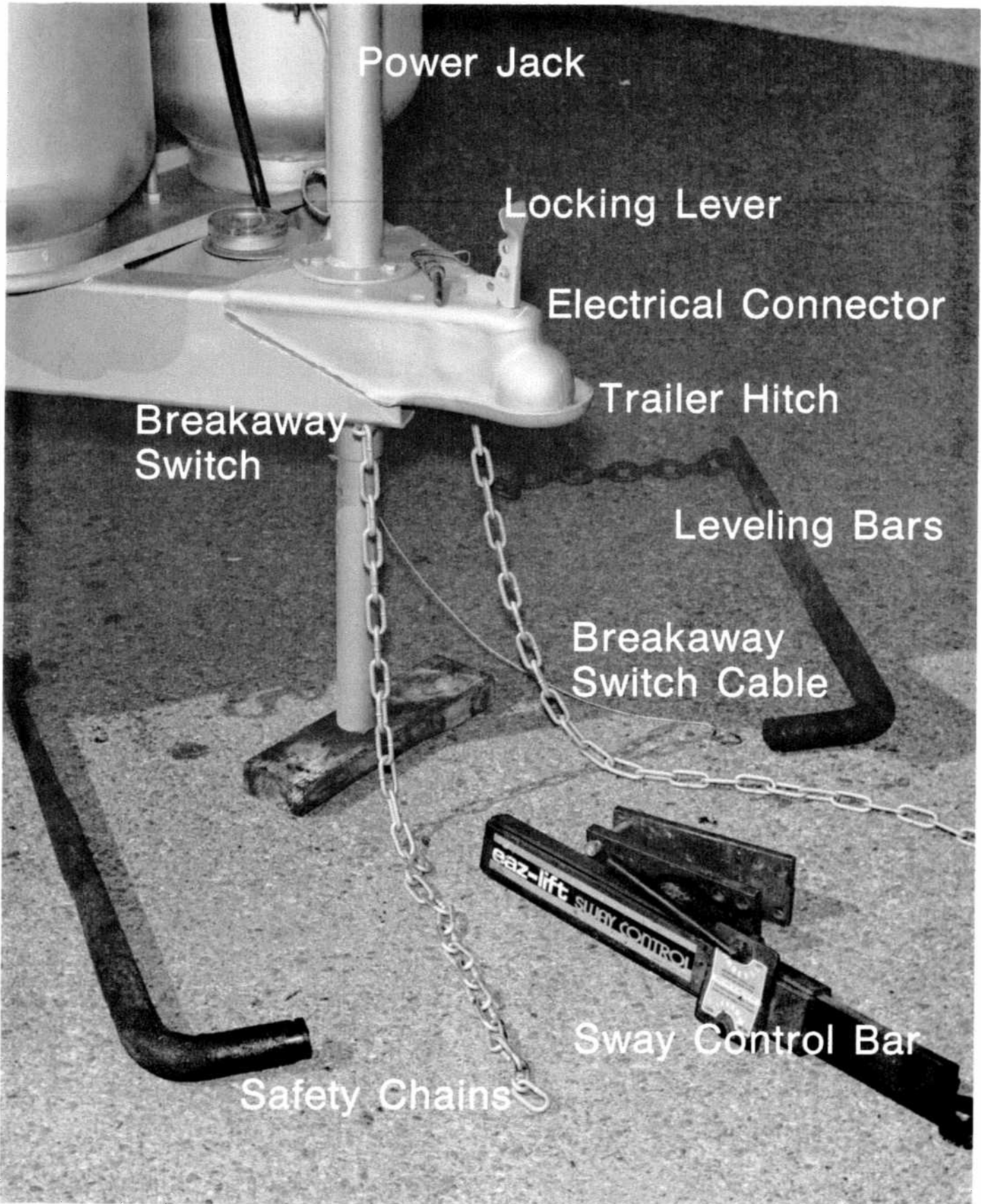


Figure 1

Figure 2

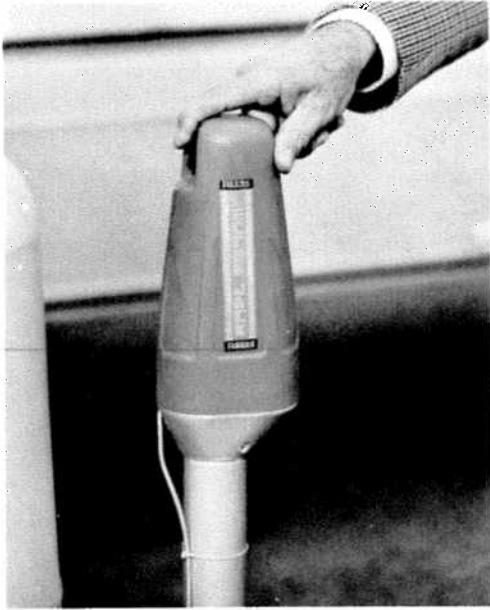


Figure 3



Figure 4

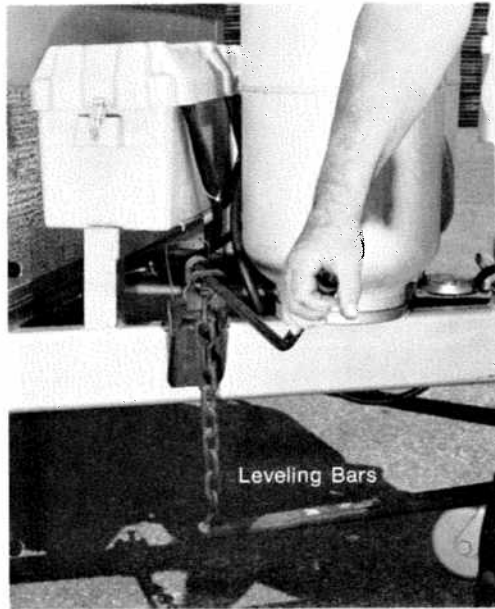


Figure 5



Figure 6

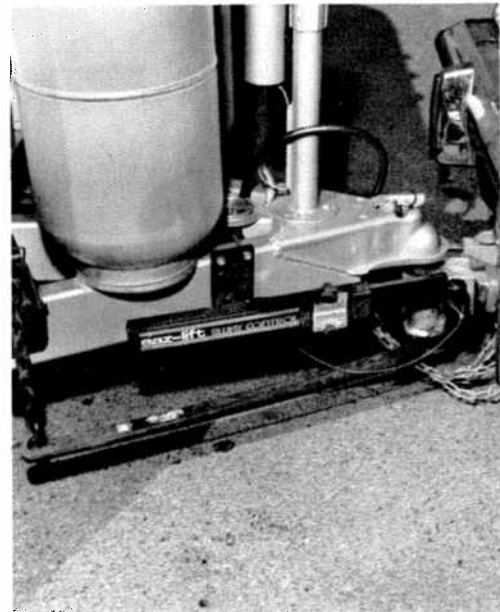


Figure 7



PRE-TRAVEL CHECK LIST

Interior

- Turn off air compressor/water pump switch.
- Check battery water.
- Close windows and vents.
- Turn off gas to range and oven.
- Lock all interior cabinet doors.
- Lock refrigerator door (seal containers first).
- Hold down or stack securely all loose, hard, and sharp objects.
- Fasten sliding and foldette doors.
- Drain toilet bowl.
- Turn off interior lights.
- Secure and lock main door.
- Pull up step.

Exterior

- Disconnect and stow:
 - electrical hook-up cord
 - sewer hook-up hose (flush out)
 - water hook-up hose.
- Turn off gas line shut-off valve to appliances.
- Remove and stow leveling jacks and wheel chocks.
- Check hitch: it must be properly attached.
- Check safety chains and breakaway switch cable.
- Fully retract power jack.
- Check clearance, turn indicators and stop lights.
- Check lug bolts.
- Check tires, for current pressure.
- Check that T.V. antenna is pointed forward and dipoles closed.
- Adjust car mirrors.
- Pull forward 50 feet, test brakes, and check site for forgotten objects and cleanliness.

TOWING TIPS

A few hours of towing practice in a large parking lot will make pulling your trailer much easier. Line out two corners to make left and right turns and to practice backing and parking. Observe that the tracks made by the trailer wheels are distinctly different from those made by the towing vehicle. Your vehicle should have rear-view mirrors on both sides for maximum visibility. In many states, they are required by law.

- On freeways or expressways, try to stay in one lane, maintaining at least the length of the towing vehicle plus trailer (for every 10 mph) between you and vehicle ahead.
- Remember, that to pass another vehicle will take longer to accelerate and you must also allow for the length of the trailer when returning to the right-hand lane.
- On a two-lane road, vehicles may start lining up behind you because you are traveling at a slower speed. It is both courteous and sensible to signal and pull onto the shoulder allowing them to pass safely.
- Your Silver Streak is designed to be towed easily at any legal speed. Consequently, you may be inclined to forget it is there. Your towing vehicle brakes will automatically apply the trailer brakes first, if properly adjusted, allowing you to stop evenly and smoothly.
- When traveling, you may encounter a temporary cooling system overload during severe conditions — such as on hot days on a long grade, when slowing after high-speed driving, or during long idle periods in traffic jams. If the overheat indicator light comes on and your air-conditioner is on, turn it off. If the light does not go off within 1 minute, pull over to the side. Do not turn off the engine but increase idle speed. Lift the hood and check for leaks of the radiator, radiator hoses, or radiator overflow outlet. Check all drive belts. *CAUTION: Never remove cap from radiator when the engine is hot! Check coolant level when engine is cool.*
- When going downhill, downshift so that engine compression will slow you down.
- Drive over dips and depressions in road slowly.
- On icy pavement, drive slowly, and if you feel your vehicle is skidding, gently apply the trailer brakes only. This will bring both vehicle and trailer back into a straight line. Chains are not recommended for trailer wheels.
- If you must drive over bad roads, the stones and gravel thrown back by the tires may dent and scratch the trailer. To prevent this, use masking tape to secure sheets of cardboard to the front of trailer.
- When a large bus or truck passes you, the displaced air first pushes the trailer rear to the right and then the front. Do not apply the brakes! Instead, steer slightly toward the bus or truck. This will compensate for the sway caused by the passing vehicle.
- If you must stop on a hill or slope, *check the trailer wheels to be doubly safe.*

CAUTION: Never use the breakaway switch as a parking brake, because it will burn out the magnets and drain trailer battery.

- To back up, line up towing vehicle and trailer in a straight line. Back up slowly and turn the steering wheel in the desired direction watching out the window or rear-view mirror until the trailer is pointed in the right direction. *(Stop immediately if the trailer is turning the wrong way.)* Always try to back to your left because visibility is better. If trailer is turning wrong, pull forward into a straight line and start again.

TRAILER LEVELING

When planning to stay at a particular location for an extended time, your trailer should be leveled. The attitude of your trailer can be checked by the use of the spirit level located at the trailer hitch "A" frame. If a correction is necessary, leveling must be done from side to side first. This is easily done by pulling the low side wheel onto 2-inch by 6-inch boards approximately 4 feet long. (We recommend bringing these boards along expressly for this purpose.)

Level from front to rear by disconnecting hitch from car and adjusting the power jack up or down, until trailer is level.

Block or chock the wheels to keep trailer in position.

Use the permanently attached stabilizing jacks installed on the trailer, to eliminate the natural spring action of the axles.

CAUTION: Never use stabilizing jacks to lift trailer.

Figure 1



Figure 2



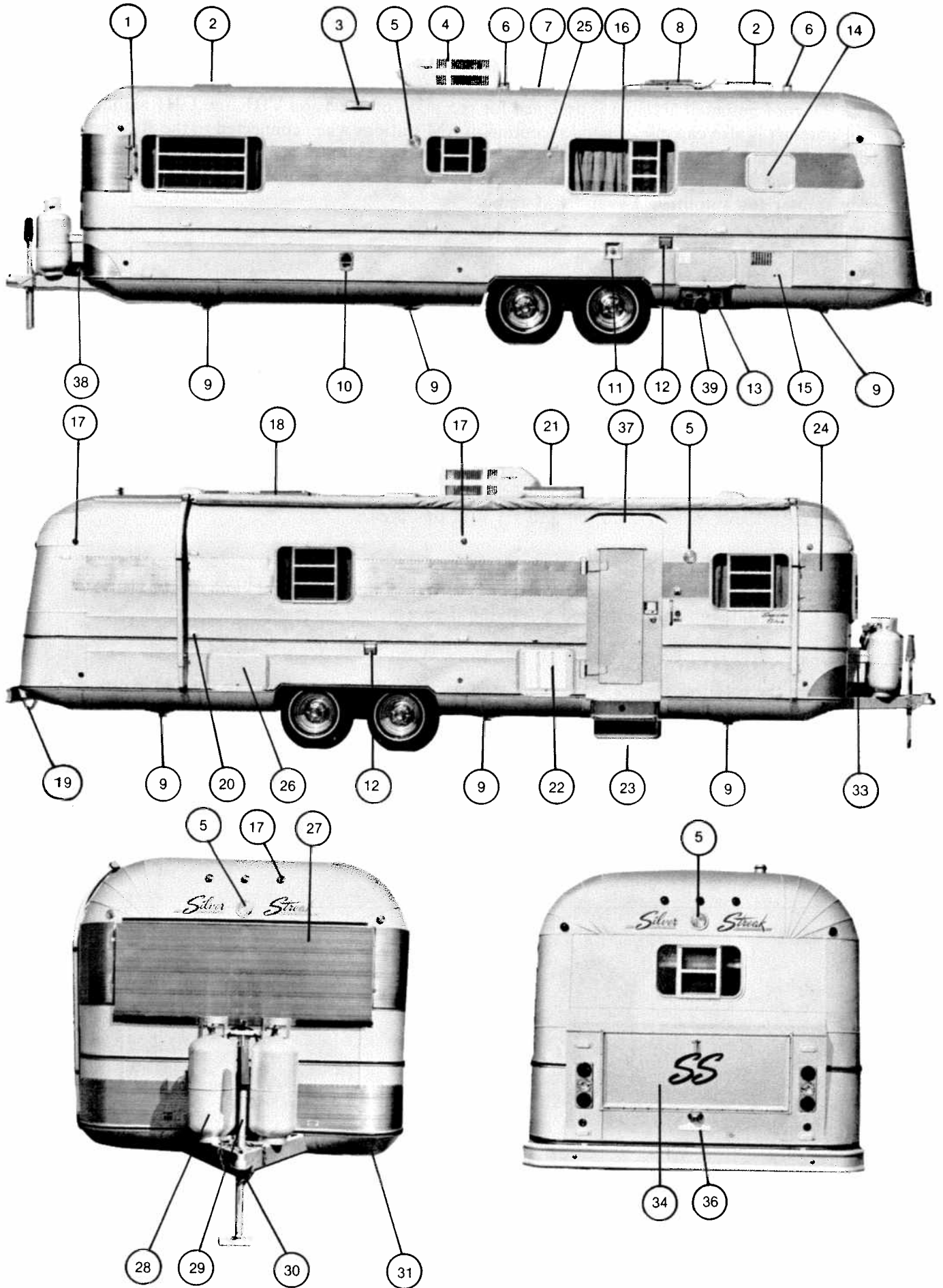
EXTERIOR IDENTIFICATION

| No. | Description | No. | Description |
|-----|--|-----|--------------------------------------|
| 1. | R.adio Antenna | 21. | R.efrigerator Vents |
| 2. | S.olar Dome Power Roof Vent | 22. | R.efrigerator Access Compartment |
| 3. | R.ange Exhaust Vent | 23. | D.ouble Foldaway Step |
| 4. | A.ir Conditioner | 24. | C.orner Window Travel Cover |
| 5. | E.xterior Light | 25. | T.V. Cable Jack |
| 6. | P.lumbing Vent | 26. | E.xterior Storage Compartment |
| 7. | R.ooft Vent | 27. | F.ront Window Rockguard Awning |
| 8. | T.V. Antenna | 28. | L.P.G Tanks and Regulator |
| 9. | S.tabilizing Jack | 29. | P.ower Jack |
| 10. | F.urnace Vent | 30. | H.itch |
| 11. | W.ater Tank Fill | 31. | S.ewer Hose Compartment |
| 12. | E.xterior 110-volt Outlet GFI Protected | 32. | E.lectrical Connector Cable |
| 13. | C.onverter/Battery Charger Compartment | 33. | B.attery Box |
| 14. | P.ower Panel Compartment (Telephone Cable) | 34. | T.runk |
| 15. | W.ater Heater Vent & access door | 35. | V.ehicle Identification Number Tag |
| 16. | E.mergency Exit Window | 36. | L.icense Plate Bracket |
| 17. | C.learance Light | 37. | E.ntrance Door With Plug-Type Screen |
| 18. | P.atio Awning | 38. | F.use Box |
| 19. | S.kid Bar | 39. | T.ermination Valves |
| 20. | S.idewall Ventilation | | |

EXTERIOR

The exterior of your Silver Streak is anodized aluminum and requires minimum care. Oil, grease, dust, and dirt may be removed by washing with a mild non-abrasive soap or detergent. Always clean your trailer in the shade when the exterior is cool. Cleaning should be followed by a thorough clean water rinse. Spots and streaks can be prevented by drying with a chamois or soft cloth. To keep your trailer looking new, paint the "A" frame and rear frame periodically. If your unit is equipped with chrome wheels or mag wheels they should be cleaned and polished frequently to prevent corrosion and pitting.

Check the electrical connector periodically for dirt or corrosion. Keep contacts clean.



VHF/UHF ROOF-MOUNTED ANTENNA

The RV roof mounted antenna is designed for reception of television VHF and UHF signals. The antenna is also capable of good reception of FM stations when connected to the 300 ohm terminals of a FM radio receiver. Included with the TRV-75 unit is a 3 way splitter, to allow simultaneous TV UHF and VHF and FM radio; the TRV-76A includes an amplifier plus 2-way splitter for amplified TV and FM radio.

OPERATION INSTRUCTIONS

RAISING ANTENNA

Rotate the elevation crank about $7\frac{1}{2}$ turns counter clockwise, do not apply undue pressure. When the antenna is in the up position the crank must be opposite the round knob before turning the rotation knob. Note: If after $7\frac{1}{2}$ turns, the crank stops in other than the area opposite the rotation knob, *reverse rotation* and set it in this area.

ROTATING ANTENNA

To set the antenna for the best signal reception, turn the rotation control knob for the clearest picture. The antenna can be turned a full 360 degrees.

LOWERING ANTENNA

First turn the rotation control knob to its stop position. The control can be rotated in either direction to this position. Turn the elevation crank clockwise (about $7\frac{1}{2}$ turns). *Do not* apply undue pressure, but turn the crank firmly to lock the antenna in its travel position.



Roof Mounted Antenna Control

CLEANING and MAINTENANCE

CLEANING

This RV roof mounted antenna is constructed of corrosion resistant materials. The antenna elements and other supporting parts made of aluminum have a heavy anodized coating. For cleaning of the aluminum and plastic parts, only soap and water should be used. Use of chrome polish or other abrasive cleaners will remove the anodized coating, leaving the aluminum open to corrosion.

MAINTENANCE

Should maintenance to the unit become necessary. You will note that by removing the four #10 stainless steel hexagon nuts, which hold the base bracket (602212) to the base plate (602211), the worm and other parts can be replaced without removing the base plate and breaking the caulking seal. For complete disassembly of the elevation and rotation parts, first remove the "E" ring on shaft 602218, then remove this shaft. Pull the worm gear free of the worm, then proceed to remove the four #10 hexagon nuts.

If it is necessary to remove a rivet, use a $\frac{3}{16}$ diameter drill. Drill out the rolled end of the rivet, then drive the remainder from the hole. When replacing the rivet, use a #10 screw and elastic locknut.

It is not recommended that grease or oil be used to lubricate the unit, as they will hold any dust or dirt that comes in contact. Because of the selection of materials, it is unnecessary to lubricate the unit. In the event it is felt necessary to lubricate, do so with a teflon type of spray.

RECEPTION

Due to the various locations used by recreation vehicles, reception will not be so consistent as at a fixed location because of the large variation in the terrain encountered throughout the country. In general, TV/FM signals (particularly UHF) travel roughly in a straight line, so hills or mountains between your vehicle and the transmitting station may severely reduce the amount of signal reaching your antenna.

When more than one TV outlet jack is used in a vehicle, it is essential to use a splitter device to avoid reduction in picture strength and quality.

8 TRACK STEREO TAPE PLAYER WITH AM/FM RADIO

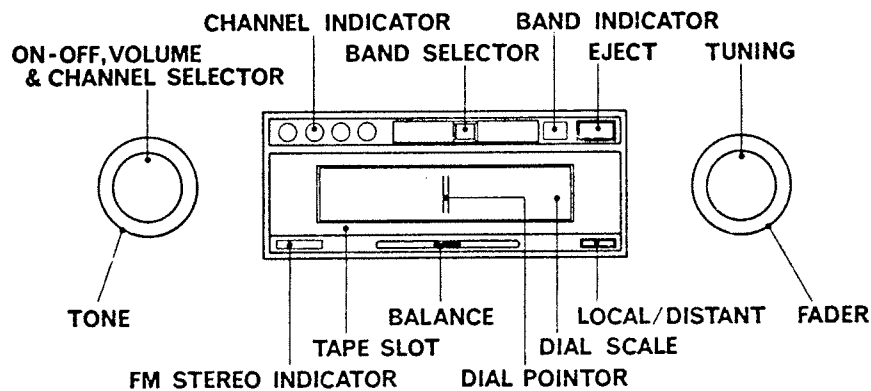
RADIO OPERATION

- The ON-OFF switch and VOLUME control are combined and are operated with the left-hand knob.
- Adjust TONE control for desired bass or treble response by rotating the left-hand knob located behind the ON-OFF and VOLUME control knob.
- The desired broadcast band (AM or FM) can be selected by the BAND SELECTOR. Slide it to the right for AM reception and to the left for FM reception.
- Rotate the knob on the right-hand and tune in the station desired.
- Adjust LEFT/RIGHT BALANCE control (located in center by bottom edge on the es-cutcheon) and FADER-FRONT/REAR BALANCE control (located behind the TUNING knob) to optimize the sound level from each of the four speakers.
- When the FM stereo is being received, the FM STEREO INDICATOR is automatically turned on.
- The LOCAL/DISTANT switch functions to minimize the effect of crossmodulation which results from strong FM signals that overdrive the radio. When operating your radio in strong FM signal area, press and lock the LOCAL/DISTANT switch (LOCAL position); when operating in normal FM signal area, release it to DISTANT position.

NOTE: When you listen to an AM, set LOCAL/DISTANT switch to DISTANT position.

GENERAL INFORMATION

This is an 8-track stereo tape player with an AM/FM, FM STEREO RADIO and perfect universal "IN-DASH" type designed for use in a car having 12 volts and negative ground battery.



TAPE PLAYER OPERATION

- Turn the unit on only when the radio is not operated. When the radio is turned on, leave it as it is.
- Insert the tape cartridge into the movable dial, operating until it locks to play.
- All controls operate the same on stereo tape as they do in radio operation.
- The ON-OFF and VOLUME control knob is also the PROGRAM SELECTOR switch. The desired program is selected by pressing this knob.
- Press the EJECT button to release the cartridge for easy removal.

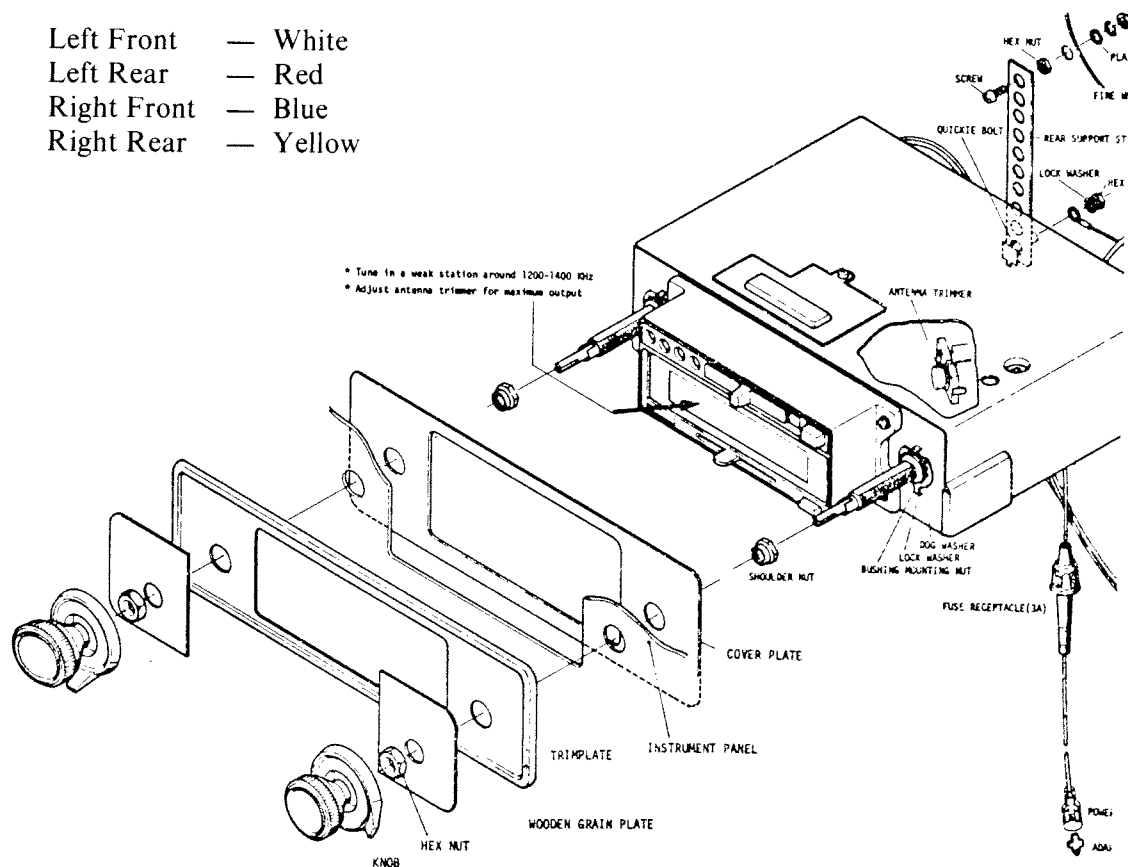
CAUTION: Once the cartridge is removed by "EJECT", take the cartridge completely out from the slot and then insert the cartridge into the slot to play it again. Otherwise, the cartridge-lock mechanism does not work.

MAINTENANCE

Sometimes, TAPE HEAD, CAPSTAN SHAFT and AUTOMATIC TRACK SELECTOR SWITCH should be cleaned in order to maintain a superior performance.

Color of Speaker Wire:

| | | |
|-------------|---|--------|
| Left Front | — | White |
| Left Rear | — | Red |
| Right Front | — | Blue |
| Right Rear | — | Yellow |



10 Gal. tank
Wt. Empty 19.5 lb.
Wt. Full 61.7 lb.
Wt. of 10 gal.
of Propane 42.5 lb.

New Overfill
Valves installed
3/28/03

LPG SYSTEM

Your Silver Streak is equipped with two aluminum liquid petroleum gas (LPG) tanks. LPG burns with a clean blue flame and produces more heat than natural gas. The LPG system is piped with black steel pipe that runs underneath the trailer underbelly and is connected to each LPG appliance with copper tubing. The two LPG tanks are installed on the trailer hitch and are connected to an automatic LPG regulator.

OPERATION

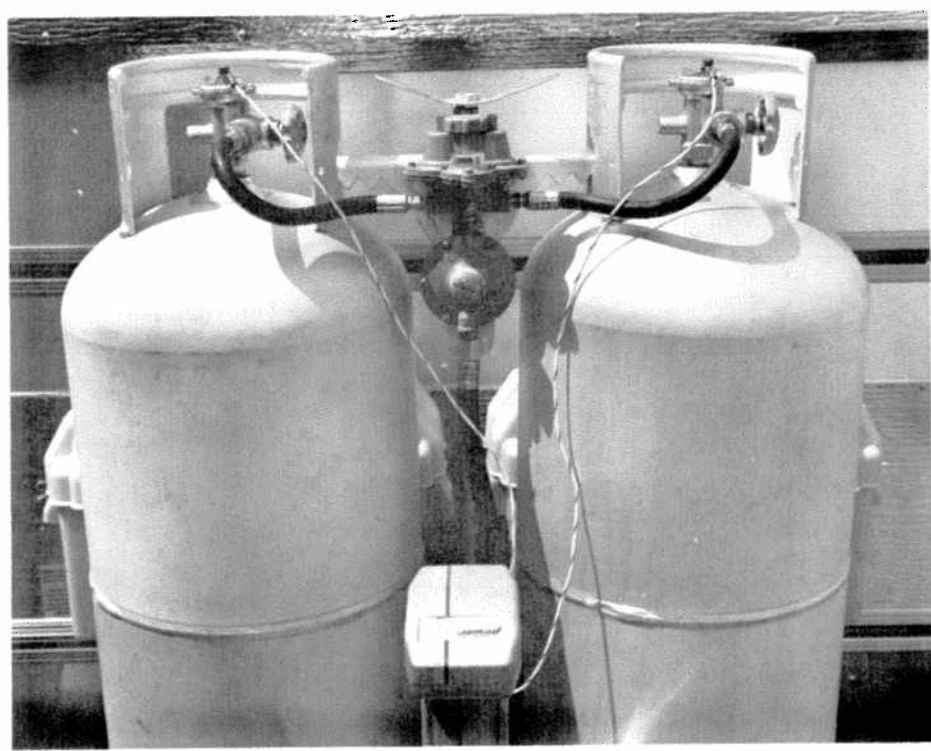
Place one of the two tanks in supply by rotating the changeover knob either way, as far as it will go. The arrow will point to the tank in use. When one tank is depleted, the regulator automatically switches to the full tank and a red warning flag appears at the indicator window.

Before removing empty tank, be sure to rotate knob so that arrow points to tank now in use. The red warning flag should not be visible now. The empty tank can be removed for refilling without disturbing tank in use. Simply close the tank valve, disconnect the flexible tubing with a wrench, and loosen the bar handle which holds the tanks in place.

CAUTION: Before turning LPG on at supply tanks, make sure that all LPG appliance valves are closed.

If both tanks are inadvertently allowed to run out, air may get into lines, in which case this air must be forced out by LPG pressure before you will be able to light any appliance.

Check all LPG line connections and appliance valves before and after opening supply tank valves. If it is necessary to check for leaks, cover pipe joints with a soapy water solution and watch for bubbles.



LPG Tanks and Automatic Gas Regulator

REFRIGERATOR

Your Silver Streak is equipped with the finest refrigerator available for trailer use and will give you many years of faithful service.

NOTE: For this refrigerator to operate efficiently, it is necessary for the trailer to be leveled.

Controls for both LPG and electric operation are located inside the refrigerator at the bottom of unit, and in the outside refrigerator access compartment.

GAS OPERATION

Make sure that LPG shutoff valve is "ON" before operating.

- To start refrigerator, turn knob (A) to gas position. Set thermostat knob (C) to setting No. 4.
- Pull knob (D) of automatic pilot out for 15 seconds and press knob (E) of flint lighter.
- See that burner is lighted through reflector window (F) and keep knob (D) pulled outward for additional 15 seconds and then release.
- If burner does not light, repeat procedure.

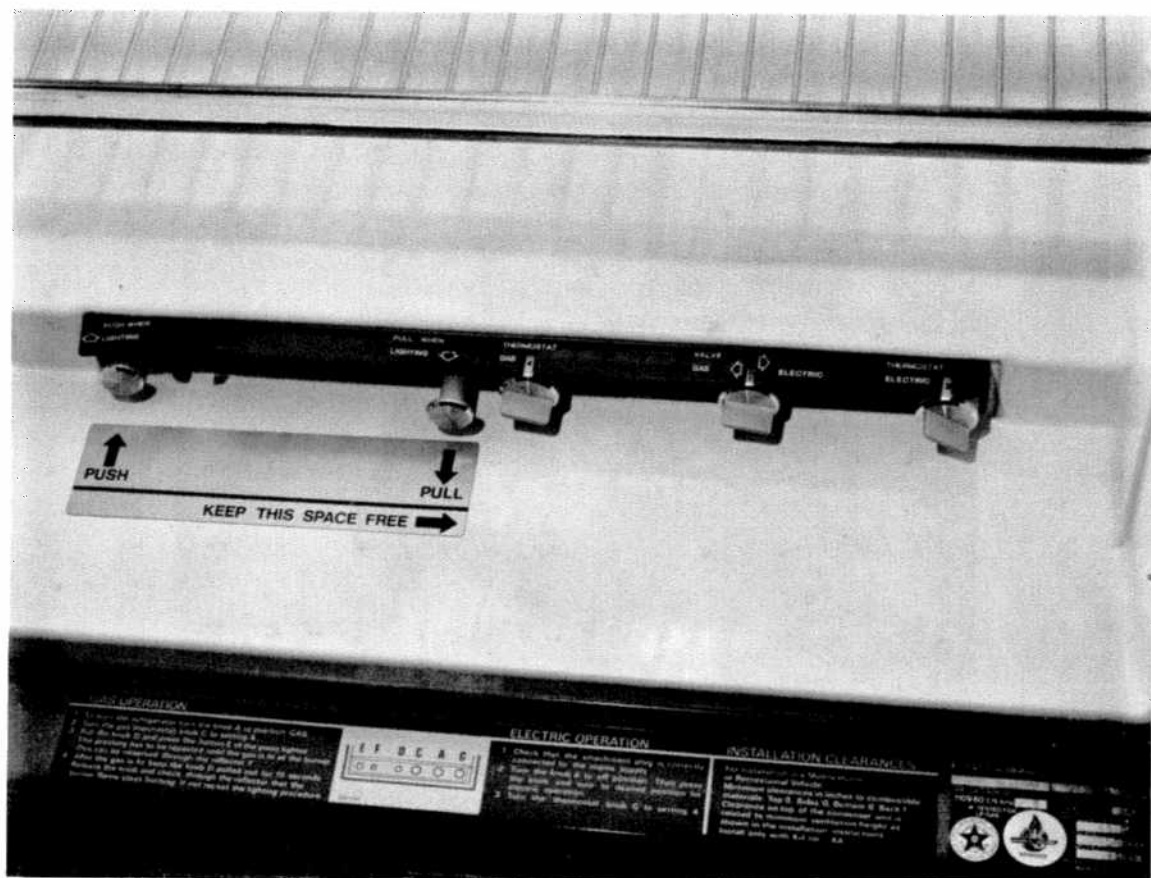


Figure 1

An automatic flame failure device is incorporated in the burner which allows LPG to pass only when burner is lighted and keeping the thermocouple hot. If the flame is extinguished, the thermocouple cools and the device cuts off the flow of LPG.

THE LPG THERMOSTAT

The refrigerator is equipped with a thermostat which is regulated by turning the knob to different settings to obtain the desired controlled cabinet temperature.

At zero
(indicated
by a dot)

Under normal operating conditions, the thermostat valve remains closed and the burner is running continuously at the bypass rate, just enough to keep the burner lit.

At MAX

The thermostat valve remains open and the burner is running continuously at full LPG rate. Lowest cabinet and freezer temperatures are obtained at this setting.

Between these two extremes, various controlled temperatures can be obtained; the higher the number, the lower the temperature. in refrig.

When the required cold temperature inside the cabinet is reached, the thermostat cuts the burner main flame leaving the bypass flame to keep the safety valve open.

TO SHUTDOWN THE REFRIGERATOR

To shutdown the refrigerator temporarily, set the thermostat to zero. If not in operation over a period of weeks, it should be emptied and cleaned and the door left ajar. The ice trays should also be dried and stored.

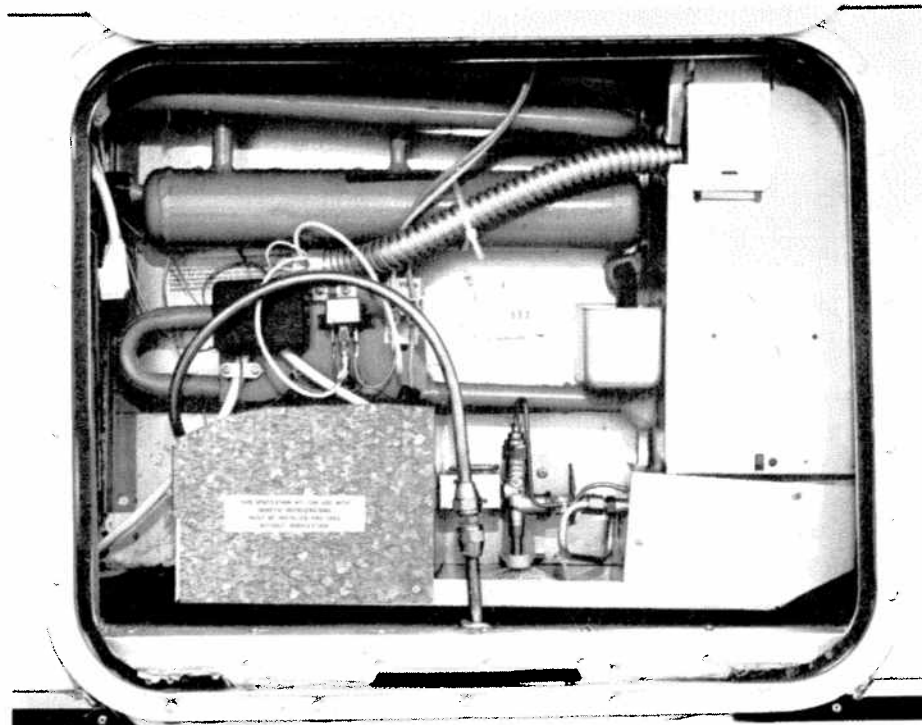


Figure 2

CLEANING

To clean the interior lining of the refrigerator, use lukewarm weak soda solution. The evaporator, ice trays, and shelves must, however, be cleaned with warm water only. Never use strong chemicals or abrasives to clean these parts or the protective surface will be spoiled.

ELECTRIC OPERATION

- Check that attachment plug of flexible cord is correctly connected to main supply. When refrigerator is also equipped for 12-V, the low voltage connection is made at marked terminals at rear of refrigerator.
- Turn knob (A) to "OFF" position, then press knob and turn to desired position.
- Turn thermostat knob (G) to setting 4.

ELECTRIC THERMOSTAT

The temperature in the refrigerator can be regulated by turning the thermostat knob to higher or lower numbers. Although the exact setting is not critical, it will usually be found suitable to choose a setting at which the frost, which gradually forms on the cooling evaporator, is just maintained in dry condition.

It will be necessary to set the thermostat knob one or two numbers higher when the ambient temperature becomes higher or the load unusually heavy.

If less cooling is required, a lower setting should be chosen. Do not attempt to adjust the thermostat.

warmer
move cooling
colder in refrig.
Note: After a replacement of the gas container or a long shutoff period, the gas line may be filled with air. In such a case, the lighting procedure has to be repeated until the air is pushed out of the line and the gas reaches the burner.

PERIODIC MAINTENANCE

NOTE: Before working on the refrigerator, make sure that 100-vac and optional 12-vdc leads are disconnected.

Once or twice a year, depending on use, clean and adjust the burner assembly:

- Disconnect gas pipe from burner assembly.
- Remove burner bracket.
- Remove burner housing.
- Clean jet with alcohol and compressed air ONLY.
- Clean burner tube (especially the gauze) with a brush. Blow with compressed air.
- Reassemble.

- Check burner with full flame (turn thermostat to MAX) and with bypass flame. If the refrigerator has been working for a few hours and the thermostat bulb is colder than about 6°C or 43°F the transition from full flame to bypass flame can be observed if one turns the thermostat knob slowly from MAX to zero.

Check the flue baffle: Make sure that it is clean and reasonably free from soot. Heavy soot formation indicates improper functioning of the burner. Clean baffle and flue.

The entire gas installation should be checked for leaks at intervals. Test all pipe connections with soapy water. Do not test with lighted match!

If the refrigerator does not freeze satisfactorily:

- Jet orifice clogged. Disengage gas pipe from burner. Unscrew nipple with jet, blow clear, and wash in alcohol. Do not use wire or pin to clean orifice.
- Check leveling of refrigerator.
- Flame has gone out. LPG in bottle is used up — refill. Clogged bypass screw — clean or exchange it.
- Air circulation around cooling unit is restricted. Be sure that refrigerator is properly ventilated.
- Evaporator is heavily coated with frost. Defrost.
- Flue baffle not inserted into the central tube of the cooling unit.
- Thermostat is incorrectly set.
- Gauze in burner head clogged. Clean.
- Burner damaged. Replace.
- Burner may be dislocated. Relocate.
- Wrong LPG pressure at the burner. Have pressure checked at burner and at LPG bottle. Pressure at burner must not fall below 11" W.G. when thermostat is set on MAX.
- Improper operation of thermostat. Check position of capillary tube between evaporator fins. End of capillary tube must be in proper direct contact with evaporator. If position of capillary tube end is not correct, adjust accordingly. If no improvement is obtained, exchange thermostat.

ODOR FROM FUMES

- Flame touches side of boiler due to dislocation of burner. Relocate. Burner dislocation may also cause smoke and discoloring of walls and ceiling.
- Burner damaged. Replace.
- The flame touches flue baffle. Burner damaged. Replace. Flue baffle too low. Correct position of baffle.
- Flue tube is dirty. Clean flue as follows: Cover burner and jet. Remove flue top and baffle. Clean flue with special flue brush. Clean baffle before replacing.

FURNACE (AUTOMATIC ELECTRONIC IGNITION)

Your furnace is designed to convert L.P. Gas into usable heat in the vehicle. This furnace will operate automatically and safely. The furnace is equipped with an electronic ignition system which automatically ignites the main burner for each heating cycle. There are a number of safety controls built into the furnace to ensure safe operation.

LIGHTING INSTRUCTIONS:

WARNING: This furnace is sealed and cannot be match lighted. Failure to follow the instructions exactly may result in an explosion and possible damage to the furnace and injury to the operator.

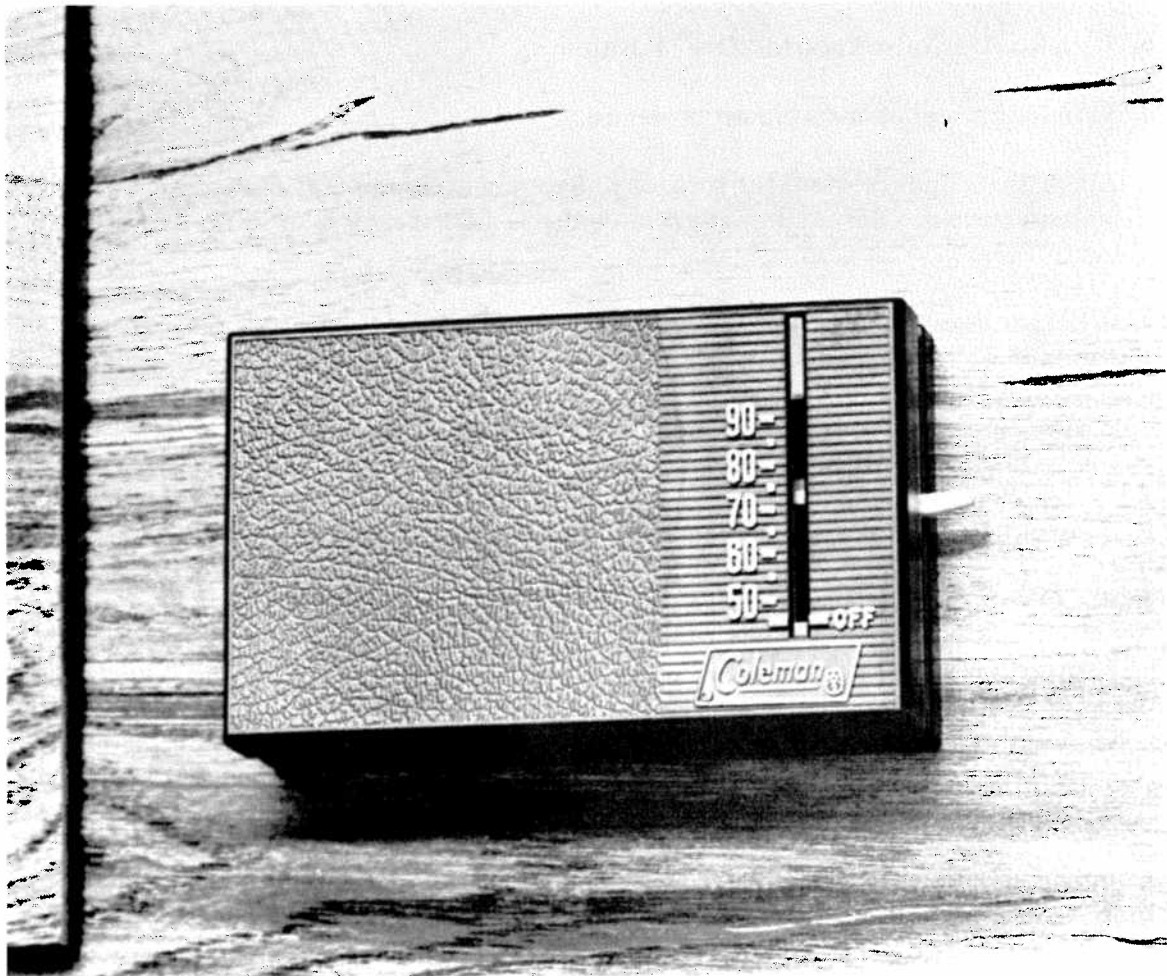
1. Turn on L.P. Gas at the tank.
2. Set wall thermostat to "OFF".
3. Set power switch to "OFF".
4. Turn red gas valve knob to "OFF" and wait 5 minutes.
5. Set power switch to "ON".
6. Turn Red Gas valve knob to "ON" Position.
7. Turn thermostat up until blower comes on.
8. Allow 20 seconds or more for furnace to light due to a prepurge cycle designed into the ignition system. On initial start-up in cold weather, it may take up to two minutes to light.
9. If burner does not light, set thermostat to "OFF", wait 30 seconds and repeat item 7 above.
10. If after three tries and no ignition, go to shutdown and determine cause. *Be sure to have gas to the furnace (no air in the lines).*
11. If furnace lights, replace front panel and set thermostat to desired temperature.

FOR COMPLETE SHUTDOWN

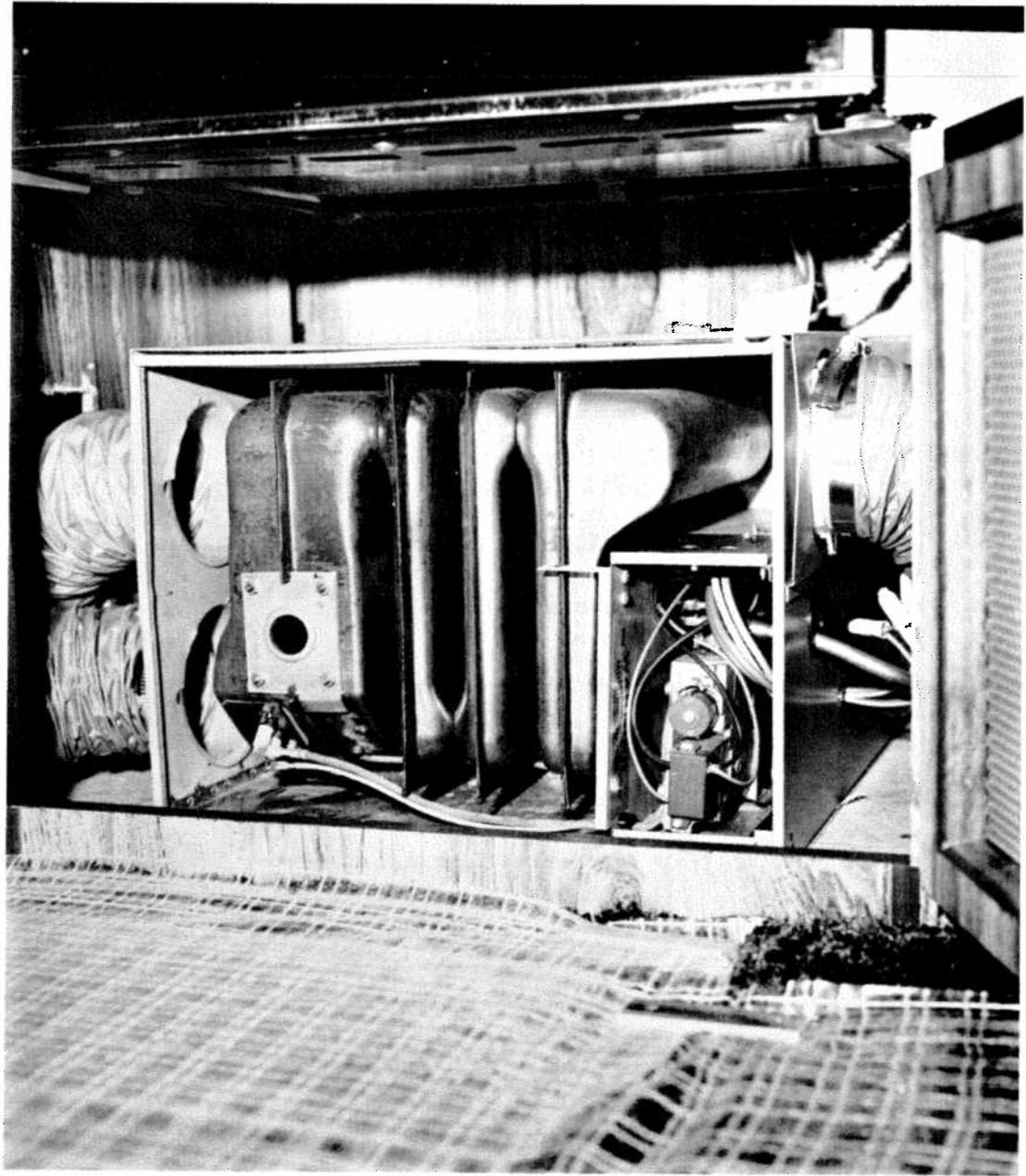
1. Turn red gas valve knob to "OFF".
2. Set wall thermostat to "OFF".
3. Set power switch to "OFF".

Complete shut down is recommended when your trailer is left unused for any length of time.

WARNING: Never attempt to modify this furnace — fire, explosion, asphyxiation and carbon monoxide poisoning may result. Do not break L.P. Gas line connections to bleed gas as a fire hazard may result. — If malfunction occurs, call your Serviceman.



Thermostat



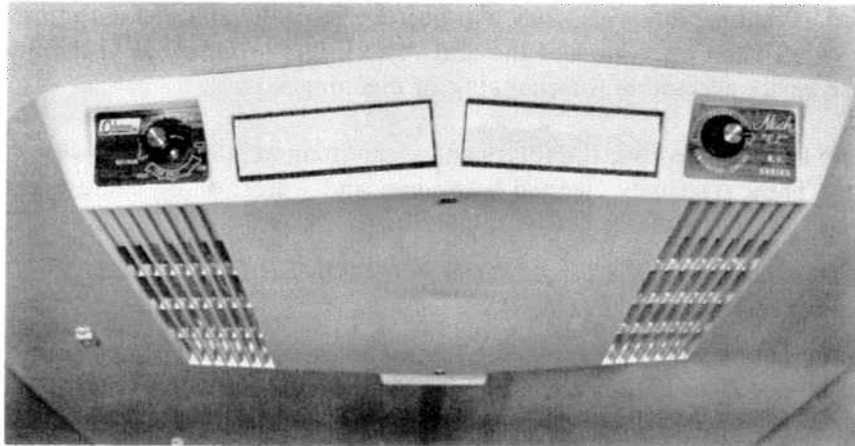
TROUBLESHOOTING CHART

| SYMPTOM | REMEDY |
|---|--|
| <p style="text-align: center;">FURNACE WILL NOT OPERATE</p> | <ul style="list-style-type: none"> • Make certain there is L.P. gas to the furnace. Turn all gas valves to "ON" position. (No air in the line.) • Make certain the electrical power connections to furnace are made. • If operating on battery be sure battery is fully charged (12 VDC). • Follow lighting instructions. |
| <p style="text-align: center;">INSUFFICIENT HEAT</p> | <ul style="list-style-type: none"> • Check for proper gas operating pressure. • Turn thermostat on and determine if main burner lights. (See lighting instructions.) <div style="display: flex; justify-content: space-around; margin-top: 10px;"> <div style="width: 45%; border-left: 1px solid black; border-right: 1px solid black; padding: 0 5px;"> <p>If blower does not start, check proper position of furnace electrical switch.</p> <p>Disconnect the two leads at thermostat and tie together to determine if thermostat is defective.</p> </div> <div style="width: 45%; border-left: 1px solid black; border-right: 1px solid black; padding: 0 5px;"> <p>If main burner lights, check air delivery at registers. Be sure registers are full open and ducts are not collapsed or disconnected.</p> </div> </div> |
| <p style="text-align: center;">NOISY OPERATION</p> | <ul style="list-style-type: none"> • Blower wheel loose on motor shaft. • Blower wheel loose in hub. • Entire blower assembly loose in mounting frame. • Blower wheel hits housing. • Noisy blower motor. • If noise is burner howl, readjust main burner. |

AIR CONDITIONER

Your air conditioner is operated totally from the control panel on the inside ceiling assembly. There are two controls on the control panel. The temperature control regulates the "ON" and "OFF" temperature setting at which the compressor will operate. The selector switch regulates the volume of air that the unit will be handling during the fan only, cooling cycle.

The air conditioner incorporates a unique return air damper control which regulates the volume of air being circulated in the trailer and can be operated completely as a dehumidifier. In addition, the air being circulated is completely filtered by non-allergic natural fiber-plastic foam filters.



— Coleman unit
shown.
Trailer has a
Domestic Unit

TO OPERATE FOR AIR RECIRCULATION ONLY

- Set selector switch to "FAN ONLY" position on dial. The fan will run continuously and filter the air without either cooling or heating the air. To obtain a lower or higher volume of circulating air, simply turn selector switch to a lower or higher setting.

TO OPERATE FOR COOLING

- Set selector switch to "COOLING" position on dial. The fan will run continuously and filter the air while keeping the air circulating throughout the trailer. Setting selector switch at "MAXIMUM" will give the greatest volume of cool air, while setting it at "QUIET COOL" will give the lowest volume of air.
- Set the temperature control to a level that is the most comfortable for you. The compressor will automatically turn on when the temperature of the air entering the air conditioner rises a few degrees above the setting you have selected and automatically turn off when the temperature drops below this setting. The air conditioner will keep cycling the compressor on and off until a change is made in mode of operation.

TO OPERATE AS A DEHUMIDIFIER

- In some areas where high humidities are experienced, it is desirable to operate your unit primarily for humidity control. Set selector switch to "QUIET COOL." In this position, the air flow will be at minimum volume.

- Set temperature control to warmest position at which compressor will cycle on and off for cooling. In this position, your unit will remove large quantities of moisture from the air without cooling the trailer.

NOTE: Whenever the unit is operated in either full cooling or as a dehumidifier, the excess moisture removed from the air will be diverted onto the roof of your trailer. DO NOT be alarmed as this moisture is allowed to escape from the air conditioner to the ground.

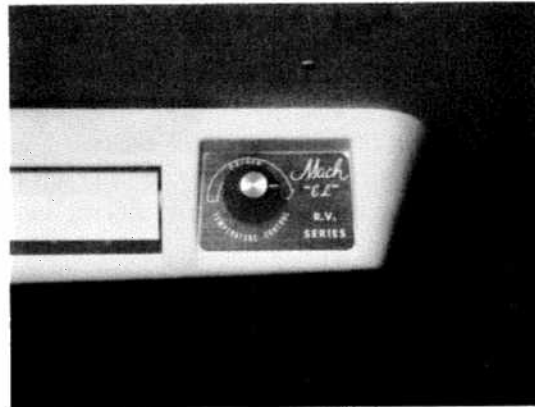
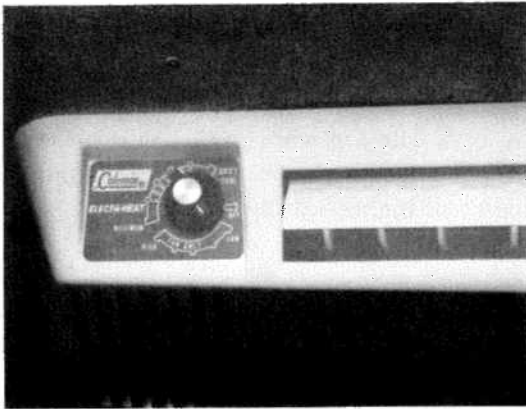
CLEANING AND CHANGING AIR FILTERS

The air filters provide a vital function to proper operation of your air conditioner. If the filters are not cleaned at regular intervals, they will become partially clogged with lint, dirt, grease, etc., and impair efficient operation of the unit. The filters are located in the interior ceiling shroud and are easily accessible for changing or cleaning.

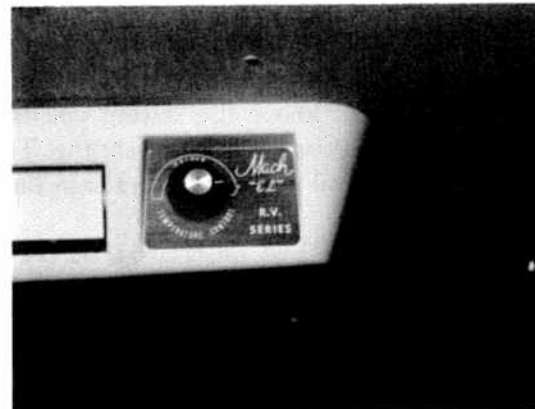
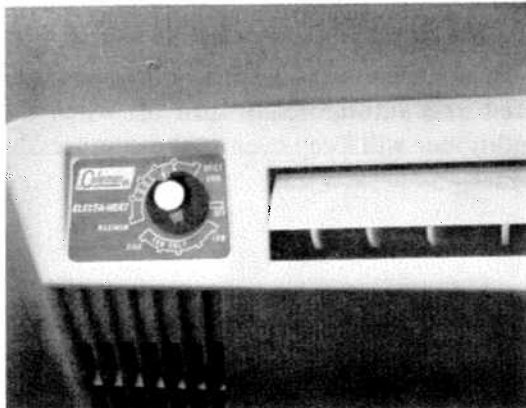
We recommend that you remove the filters and clean them at least every 2 weeks that the unit is in operation. They are easily cleaned with soap and water, or by using a garden hose to remove dirt. Dry filters carefully before reinstalling.

CAUTION: DO NOT OPERATE AIR CONDITIONER FOR EXTENDED PERIODS WITHOUT AIR FILTERS.

Carry spare filters at all times for replacing filters that become torn or deteriorated from long use. They can be purchased from any Coleman Authorized Service Center.



To Operate For Air Recirculation Only



To Operate For Cooling

RANGE/OVEN/HOOD

Cooking ease, modern styling, and dependability are all yours with your new Magic Chef recreational vehicle range and oven. The following information will help you use your range easily and efficiently.

TO LIGHT TOP BURNERS

- Light match and turn control knob counter-clockwise to the full "ON" position.
- Apply lighted match immediately over burner until burner ignites.
- Adjust flame by turning knob toward the "OFF" position.

CAUTION: Do not turn control knob on and allow LPG to escape before lighting match.

USING THE OVEN

The thermostat on your oven has no bypass setting and will cycle on and off at all temperature settings except broil (B).

LIGHTING INSTRUCTIONS

- Be sure all valves are in "OFF" position.
- Turn on main LPG supply.
- Depress and turn thermostat dial to "OFF" position.
- Open oven door and light pilot with match.

Depress and turn thermostat dial counter-clockwise to the desired temperature setting. In approximately 45 seconds, the safety valve will open, allowing gas to flow to the oven burner which is then ignited by the pilot.

To turn oven burner off, simply turn thermostat dial to the "OFF" position. The standby pilot will remain lighted until thermostat dial is turned to "PILOT OFF" position.

NOTE: When the trailer is not in use or while traveling, turn the thermostat dial to the "PILOT OFF" position and turn off main LPG supply.

To keep your range looking bright and new, wipe all surfaces after use with a warm detergent solution and soft cloth. This should be done as soon as the range cools.

The best way to clean chrome surfaces is to wipe them with a damp cloth and then dry thoroughly. Stubborn stains may be removed with chrome polish.

Wipe cooled glass with detergent and hot water. Rinse and polish with soft cloth.

A light steel-wool soap pad will bring back luster and clean any stubborn stains or food spots. Avoid use of lye or caustic solution on aluminum parts.

NOTE: If oven bottom is removed for cleaning or servicing, be sure that oven bottom is locked in place when it is put back into the range. Oven bottom can be removed for cleaning by pushing in on both sides and lifting front to release from side supports.

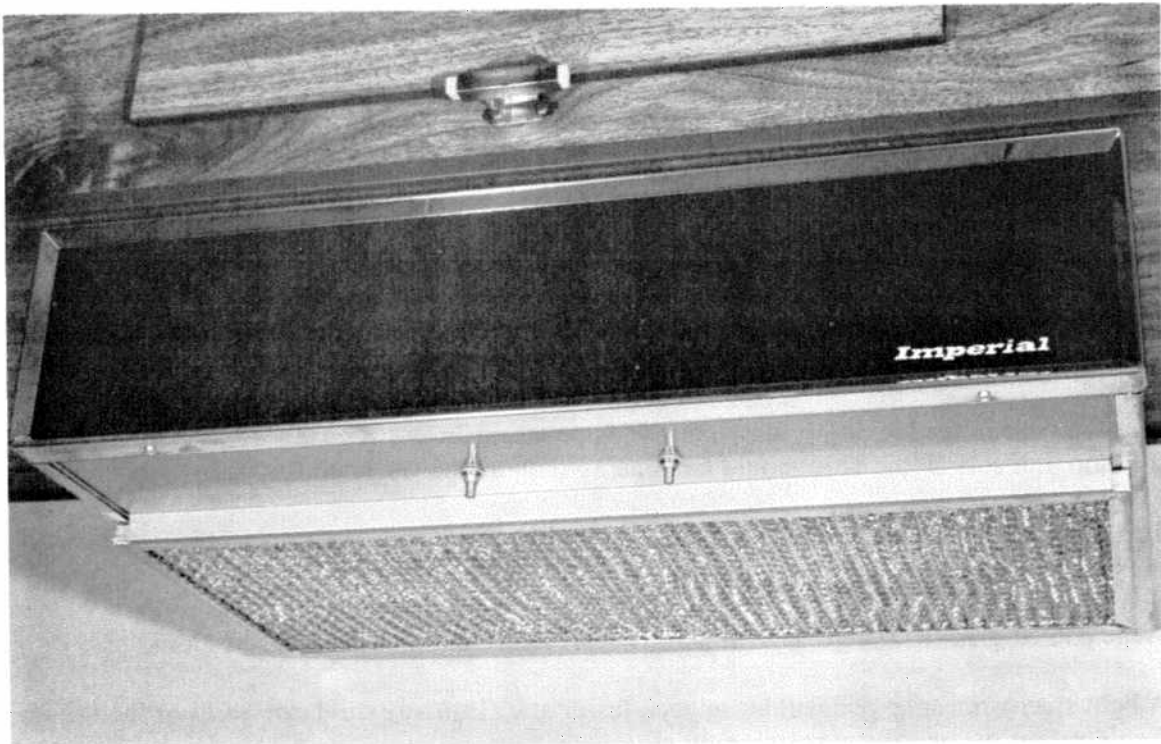
If top burners are cleaned with any cleaning compound, care should be taken to see that all ports are opened up with a toothpick to ensure proper operation. It is especially important that the lighter ports on the side of the burner head are kept clear.

Your ventilating hood is designed to give years of service. To ensure the best results, the following should be observed:

- “HIGH” speed should be used when frying, and “LOW” speed for everyday use.
- Heavy frying or cooking which creates excess smoke should be done on the rear burners.
- Cross-drafts from windows and air-conditioning units tend to carry cooking vapors away from the hood.

Cleaning is easy if done at frequent intervals; for best results use Windex on all surfaces and wipe clean with a soft cloth or soft paper towel. **DO NOT USE CHROME CLEANERS OR POLISH** on the hood.

The filters should be cleaned at least every 30 days or after each trip. To clean, lift filter out and wash in any mild detergent until clean. Rinse in hot water, shake, and allow to dry before replacing.



COMFORT VENTILATION

The deluxe two-speed Imperial range hood adds comfort to your recreational vehicle by drawing in fresh outdoor air. Its efficient operation completely removes hot stuffy air in less than 2 to 3 minutes. At the same time, it replaces it with cool, fresh outdoor air.

Upon arriving at the campsite, turn your Imperial hood on high speed and open a window or two of your vehicle. By the time you have settled down, your unit is completely ventiated with all severe heat and stale odors removed. You can then turn the unit to low if you wish for continued quiet ventilation.

By using your range hood in this manner, you can save energy and money by using your air conditioner for only severe heat occasions.

MICROWAVE OVEN (OPTIONAL)

Your stove may be equipped with an optional microwave oven. The microwave oven power cord is connected to a separate electrical circuit with no other major appliances or heating devices on the same circuit when in operation. The circuit is controlled by a "Double-Pole-Double Throw Switch" — one position furnishes power only to the microwave oven, the second position furnishes power only to the air conditioner, never can both be on at the same time.

OPERATING INSTRUCTIONS

1. Open door, interior light comes on.
2. Place food in the oven.
3. Turn the solid state heat control to the setting you need. (See Cookbook for recommended settings).
4. Set the timer.
5. Close the door and cooking begins. The blower and heating indicator light comes on when you close the door. The interior light stays on. The timer gradually returns to zero as cooking time elapses. Warm air exhausts from the top of the oven as your food cooks.
6. When the cooking time is over, a bell sounds to let you know. The oven shuts off. The blower, heating indicator light and interior light all turn off, to assure you that microwave energy is no longer being produced.

If you open the door while the oven is cooking, the interior light stays on. All microwave energy stops instantly. The blower and heating indicator light automatically shut off and the timer stops. When the door is closed again, the blower and heating indicator light come back on, and the timer resumes its countdown.

NOTE: Be sure to set the timer at zero when you are not using the oven.

IMPORTANT: YOU MUST REGISTER YOUR MICROWAVE OVEN. THIS IS A FEDERAL REQUIREMENT.

A registration card is included in the literature packed inside this oven. Please:

1. Fill in registration card and mail it to address as noted.
2. If you move send new address as noted.
3. If you purchase this microwave oven from a previous owner, establish your ownership.

4. Include Model Number _____
Serial Number _____
in all Correspondence.

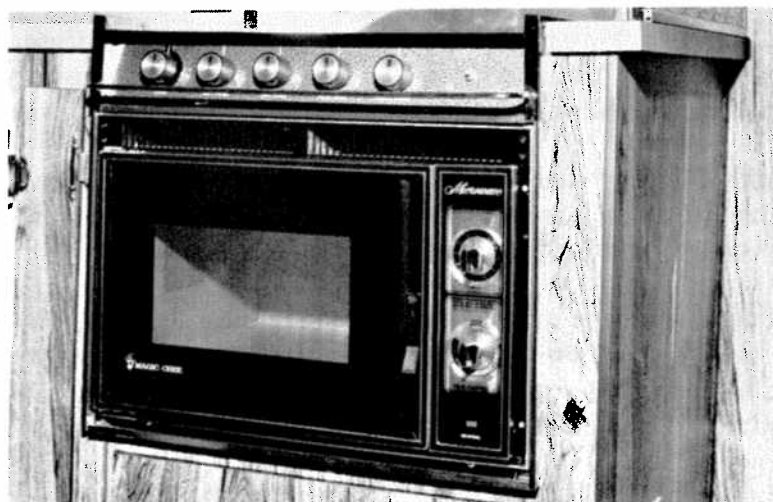
Address:

Magic Chef
Microwave Records
740 King Edward Ave.
Cleveland, Tennessee 37311

WARNING: Precautions to avoid possible exposure to excessive microwave energy.

1. Do not attempt to operate this oven with the door open, since open-door operation can result in harmful exposure to microwave energy. It is important not to defeat or tamper with safety interlocks.
2. Do not place any object between the oven front face and the door, or allow soil or cleaner residue to accumulate on sealing surfaces.
3. Do not operate the oven if it is damaged. It is particularly important that the oven door close properly, and that there is no damage to the: (1) door (bent); (2) hinges and latches (broken or loose); (3) door seals and sealing surfaces.
4. The oven should not be adjusted or repaired by anyone except properly qualified service personnel.

MICROWAVE OVEN



WATER HEATER (DIRECT ELECTRONIC IGNITION)

The water heater is equipped with a direct (electronic) ignition system. Just flip a switch inside the coach and the water heater starts heating water.

OPERATING INSTRUCTIONS:

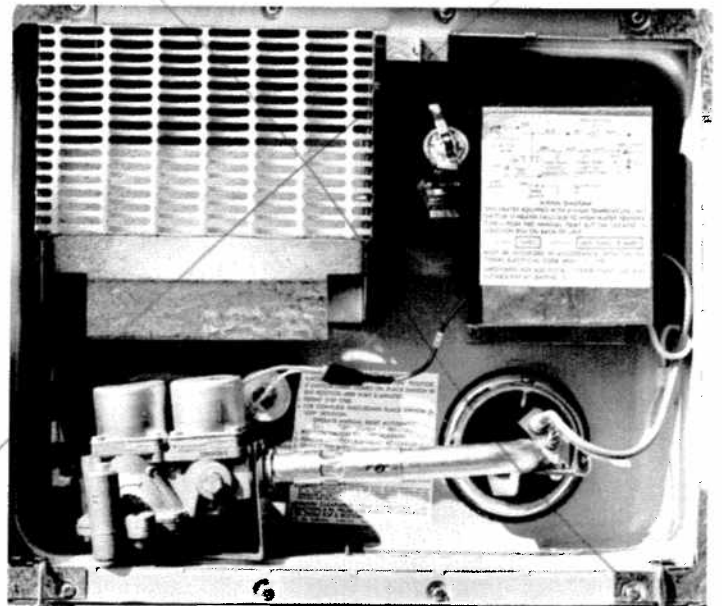
- 1 Place switch in "ON" position.
- 2 If switch light comes on, place switch in "OFF" position and wait 30 seconds.
- 3 Repeat step one.
- 4 For complete shut down, place switch in "OFF" position.

NOTE: It may take more than one start attempt when the unit is being used for the first time or after the L.P. gas tank has been refilled allowing air into the lines.

The water in the tank is heated automatically to a temperature of 160°F then the valve closes and the L.P. gas is shut off. When the water in the tank drops below 160°F the process will automatically light the burner and re-heat the water to its preset temperature. This process will automatically repeat itself.

This unit is equipped with a manual reset (ECO) automatic gas shut-off system actuated by high water temperature. Reset "ECO" switch as follows:

- 1 Position switch in "OFF" position.
- 2 Remove junction box cover at rear of unit.
- 3 Depress red button on limit switch.
- 4 Replace cover. *Be Sure Cover Insulation is Replaced.*



Water Heater Controls

PRESSURE WATER SYSTEM

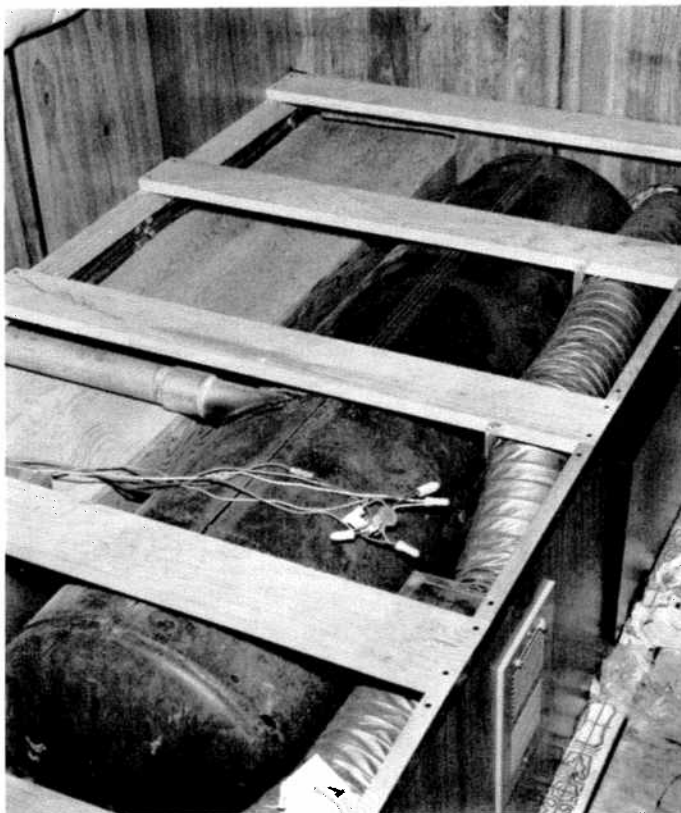
The water system in your Silver Streak has been designed to function the same as the water system in your home. It is equipped with a water storage tank and air compressor for complete self-containment and can also provide full water service when a city water source is available.

When the self-contained system is in operation, the air compressor/water pump should be turned on by the switch located on the Control Panel. The air compressor keeps a constant pressure on water tank or storage tank and turn on only to maintain pressure. This system is supplied from a 34-gallon water storage tank and a 10-gallon hot water heater.

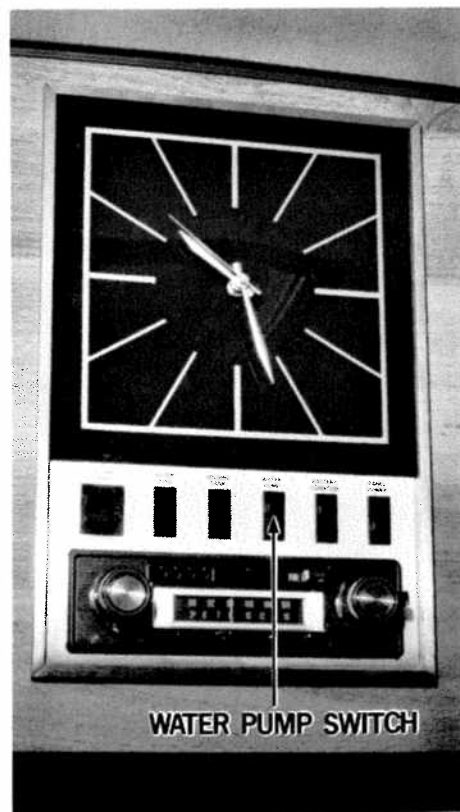
When city water is available, connect a high-pressure hose to the water inlet fitting. Turn water on and slowly open an inside faucet until the lines are clear of air. The system is now ready for use.

NOTE: The air compressor/water pump must be turned off when system is connected to city water source.

The water storage tank is equipped with a valve that allows it to be filled while system is connected to city water supply. By closing this valve, the water tank will be isolated from city water supply and water from tank can only be drawn through the Water-Gard purifier faucet. All other water faucets will provide water from city water supply. The system also has pressure relief valves in the water lines that protect the water tank when the system is connected to the city water supply.



Water Storage Tank

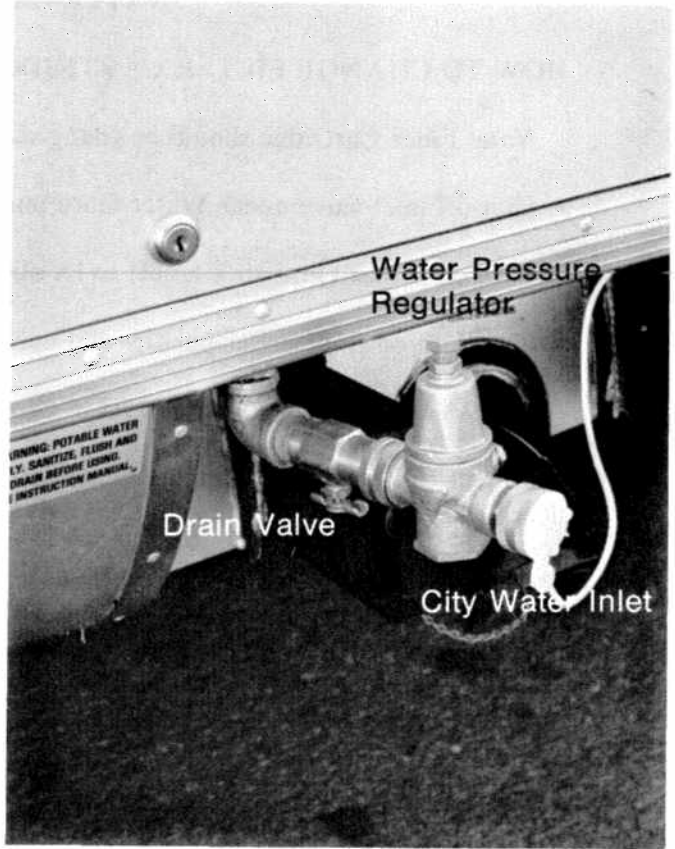


Control Panel

*System Replaced @ demand
in Jan. 84.*



Control Panel Location



Drain Valves in Converter/Battery Charger Compartment

WATER-GARD PURIFIER

HOW TO CHANGE FILTER CARTRIDGE

Note: Filter Cartridge should be changed every 90 days.

- Shut off inlet valve under Water-Gard purifier.
- Turn on Water-Gard sink faucet to let all water run out of line.
- Place pan on floor under purifier and open rim clamp. Let clamp hang on front tubing.

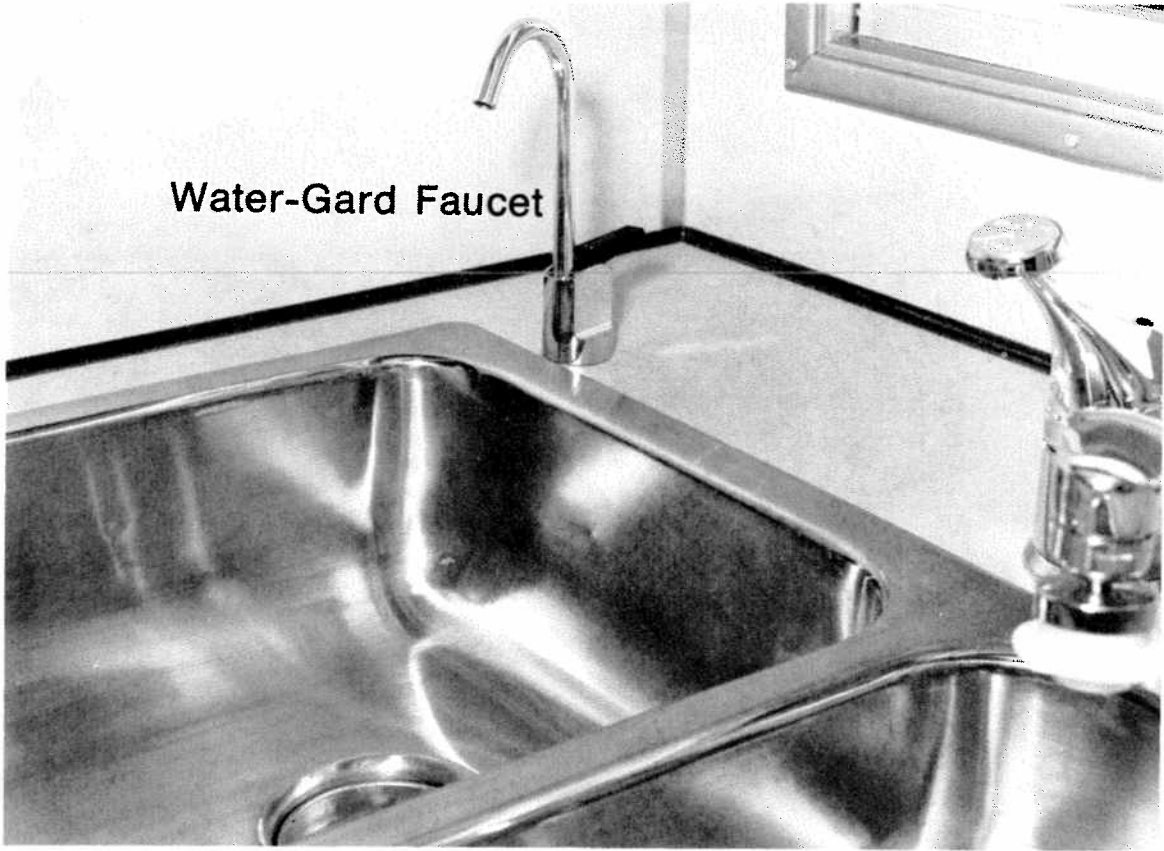
WARNING: DO NOT OPEN RIM CLAMP UNTIL PRESSURE IS RELEASED.

- Pull off lid. The tube remains attached to lid and can swing outward to allow room to remove cartridge. If lid is held tight by vacuum, open inlet valve momentarily to free lid.
- Remove cartridge and replace with new cartridge.
- Replace lid (make sure rubber “O” ring is seated in lid).
- Replace rim clamp.
- Turn on inlet valve until all air is forced out of unit through the sink faucet.

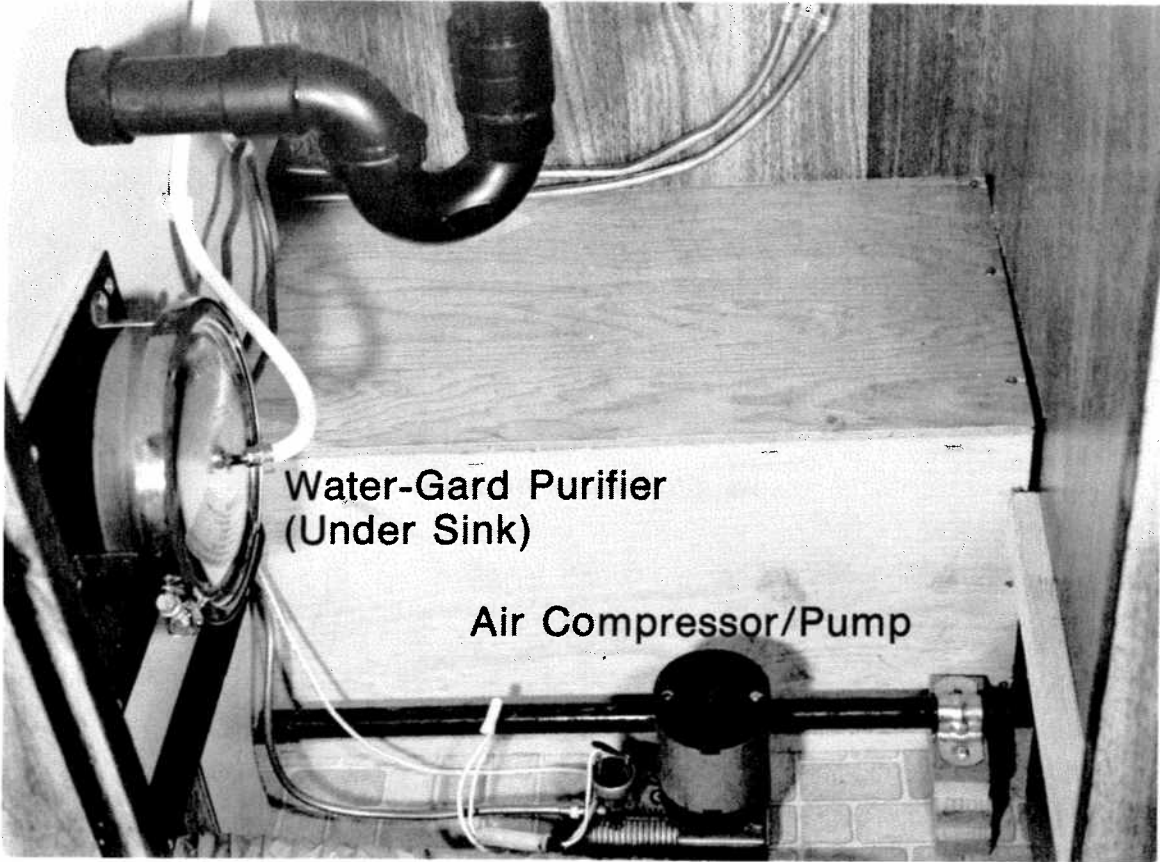
(Whenever Water-Gard is opened, air becomes trapped in the system. This air is forced through the cartridge and may appear in your drinking water as tiny bubbles which will disappear in a few minutes.)

- Flush for 2 to 3 minutes at startup to activate and remove excess charcoal.

Note: Leave Water-Gard sink faucet open whenever system has been drained and is being refilled. Entrapped air can compress and cause damage to your Water Gard.

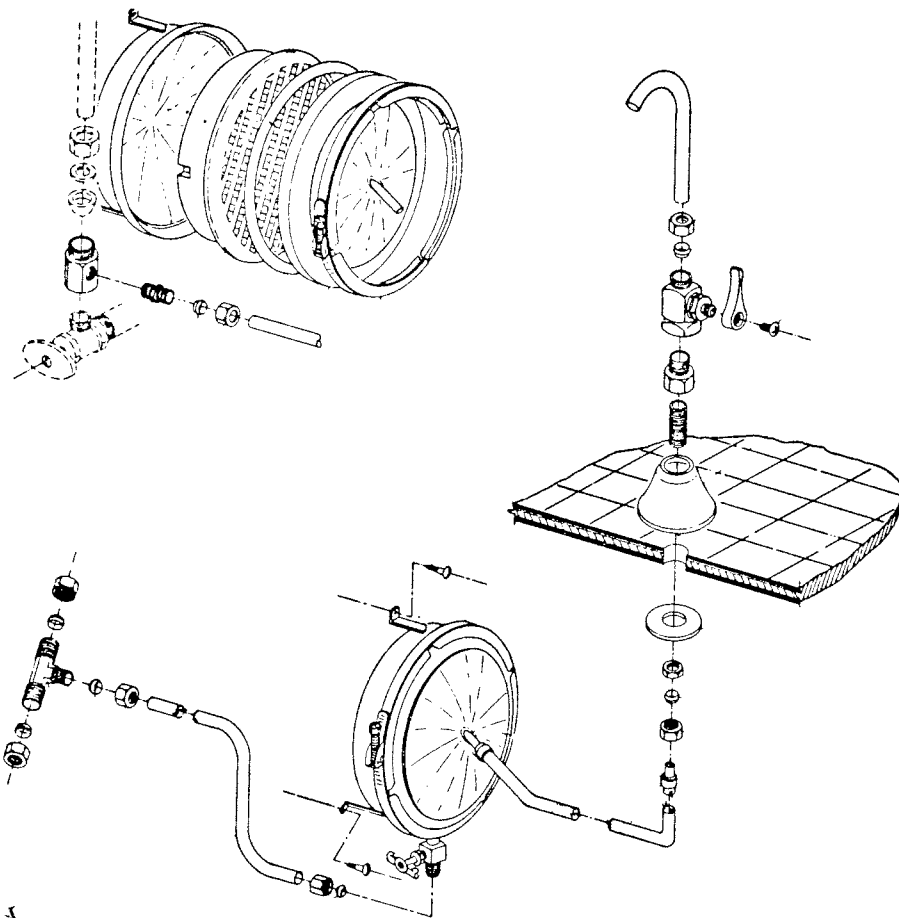


Water-Gard Faucet



**Water-Gard Purifier
(Under Sink)**

Air Compressor/Pump



④ Replace
years Filter

Water-Gard Purifier Breakdown

DRAIN AND WASTE SYSTEM

Your Silver Streak is equipped with a drain and waste system similar to the one in your home. The system includes two waste-holding tanks made of molded plastic free from corrosion, and troublefree dump valves. The septic tank enables the use of the toilet away from disposal facilities. The gray water tank holds the waste water from the sink, shower, bath, and lavatory. Each tank has its own dump valve; however, both tanks drain through a common outlet. Therefore, only one connection is necessary when hooking up in a trailer park with sewer facilities.

When the toilet will no longer drain, the septic tank is full and must be emptied. To empty the two waste-holding tanks, attach the sewer hose (stored in outside sewer hose compartment) by pressing the bayonet fitting onto the dump valve outlet and rotate clockwise until secured. Attach the outlet end of hose to sewage outlet making sure that hose is placed to drain completely. To open the dump valve, make one-quarter turn and pull outward.

The septic tank must be flushed until all tissue and waste material is removed. Close dump valve and refill tank with clean water and repeat until clean.

When connected to a sewer outlet, keep the septic tank dump valve closed and the gray water tank valve open. Empty the septic tank regularly, or when tank is almost full. By releasing a large amount of water through the septic tank, tissue and other solids will be completely washed away. This practice will avoid the accumulation of solids in the tank, which could lead to an unpleasant cleaning job.

To help conserve water, flush toilet with the hand spray:

- Hold hand spray in ready position over bowl.
- Depress thumb button and step on the foot pedal, which sprays water and dumps the contents at the same time.
- Spray the bowl clean.
- Release foot pedal, shutting off water flow.
- To refill bowl with water for next use, depress foot pedal until water reaches desired level.

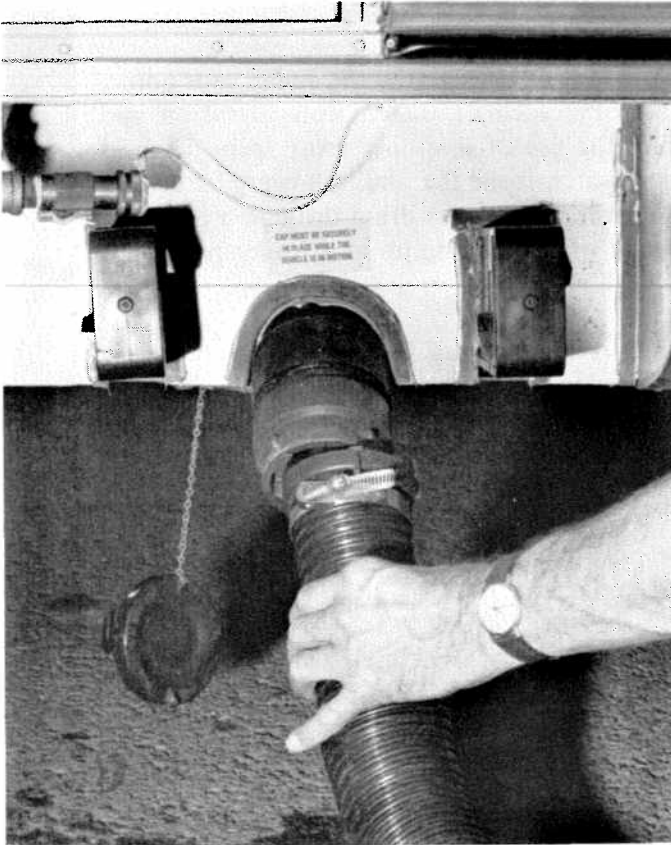
If you are able to empty the septic tank frequently, you can use the automatic flush. This uses little water and the tank will accommodate requirements of two adults for several days.

Whenever water is scarce, using the hand spray flush allows you to stay longer in areas where the septic tank cannot be emptied. To flush for urine only, first wet the bowl with water, and again after use. To flush for solid matter, spray just enough water in bowl to float tissue and solids. After use, rinse down the sides and empty the bowl.

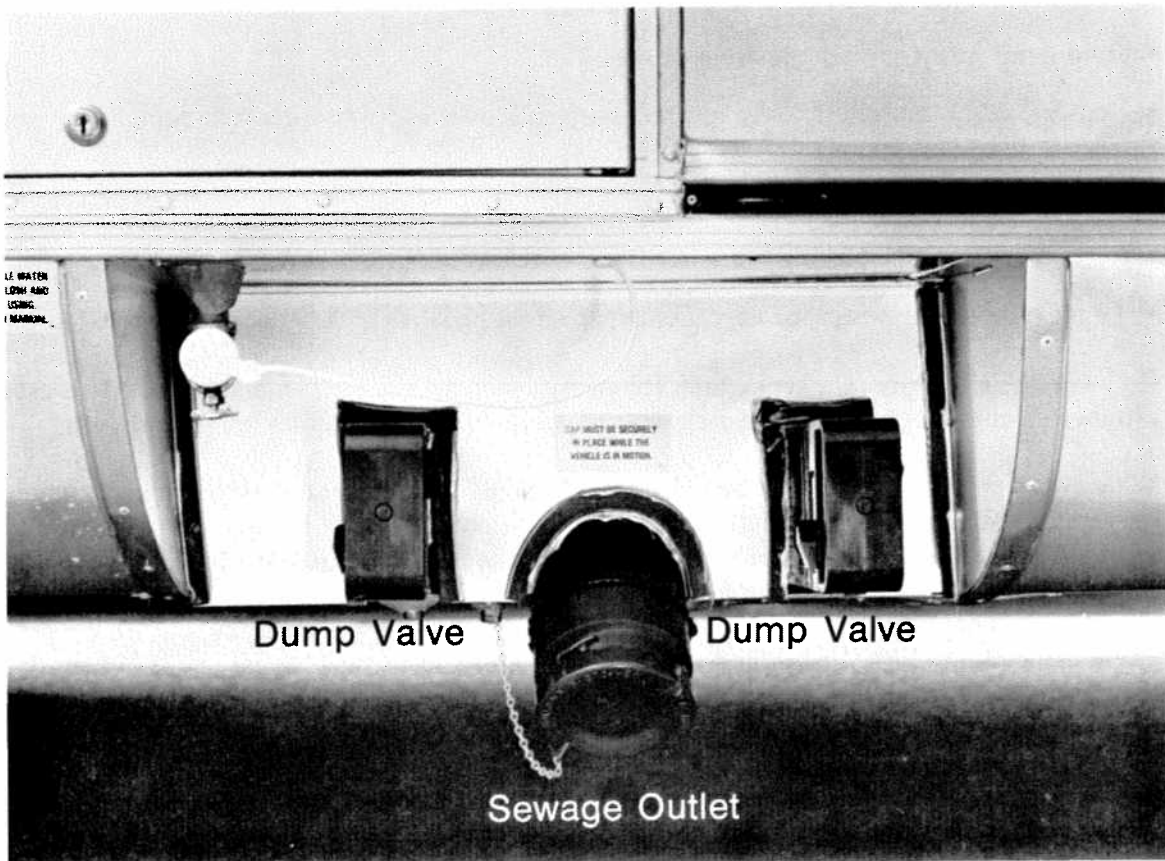
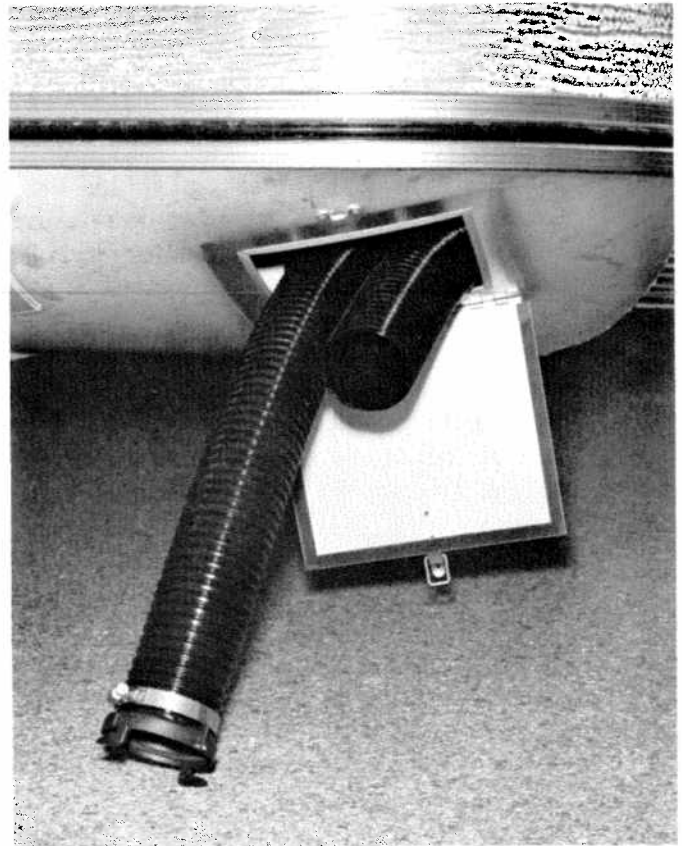
There are certain items that should never be put into toilet or tank; facial and other similar tissues have wet strength and do not dissolve easily. Toilet tissue, especially white, dissolves satisfactorily after traveling.

Use only trailer sewage tank deodorizers. Ammonia, alcohols, and acetones may cause damage to the tank, valves, fittings, and drain hose.

Attaching Sewer Hose



Sewer Hose Compartment



ELECTRICAL SYSTEM

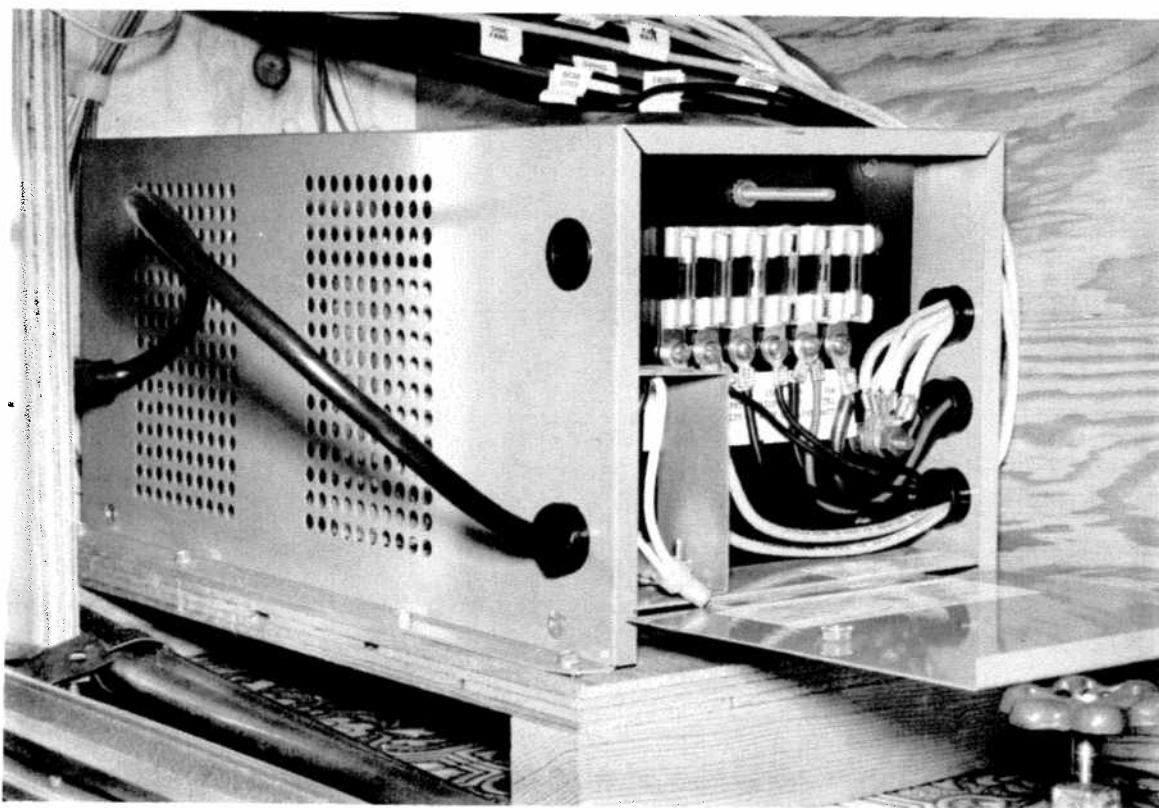
The Silver Streak electrical system provides the use of lights and appliances whether operating on self-contained battery power or connected to 110-volt city power. The 12-volt trailer light fixtures will furnish the same light as household light fixtures. When operating on self-contained battery power, all 12-volt appliances and lights will operate except the 110-volt convenience outlets and the electrical operation of the refrigerator.

Convenience outlets for both 110-volt and 12-volt are located throughout the interior of the trailer.

When operating on city power, make certain that the service is 110-volt and *not* 220-volt. The power supply cable (stored in power panel compartment) has a three-wire plug; consequently, there will be no problem with proper polarity or grounding when connecting to city power. In some recreation parks and certain locations where three-wire outlets are not available, the following precautions must be taken to ensure proper grounding and polarity:

- Attach the three-wire plug to a two-wire electrical adapter. This adapter has a third wire which is the ground lead.
- Connect the ground lead to a grounded outlet box or to a cold water pipe. When no water pipe is available, sink a ferrous copper conductive metal rod 2 feet into the ground and attach the ground lead to it.

To operate on self-contained battery power, simply disconnect the power supply cable from the city power outlet and store the cable in the power panel compartment.



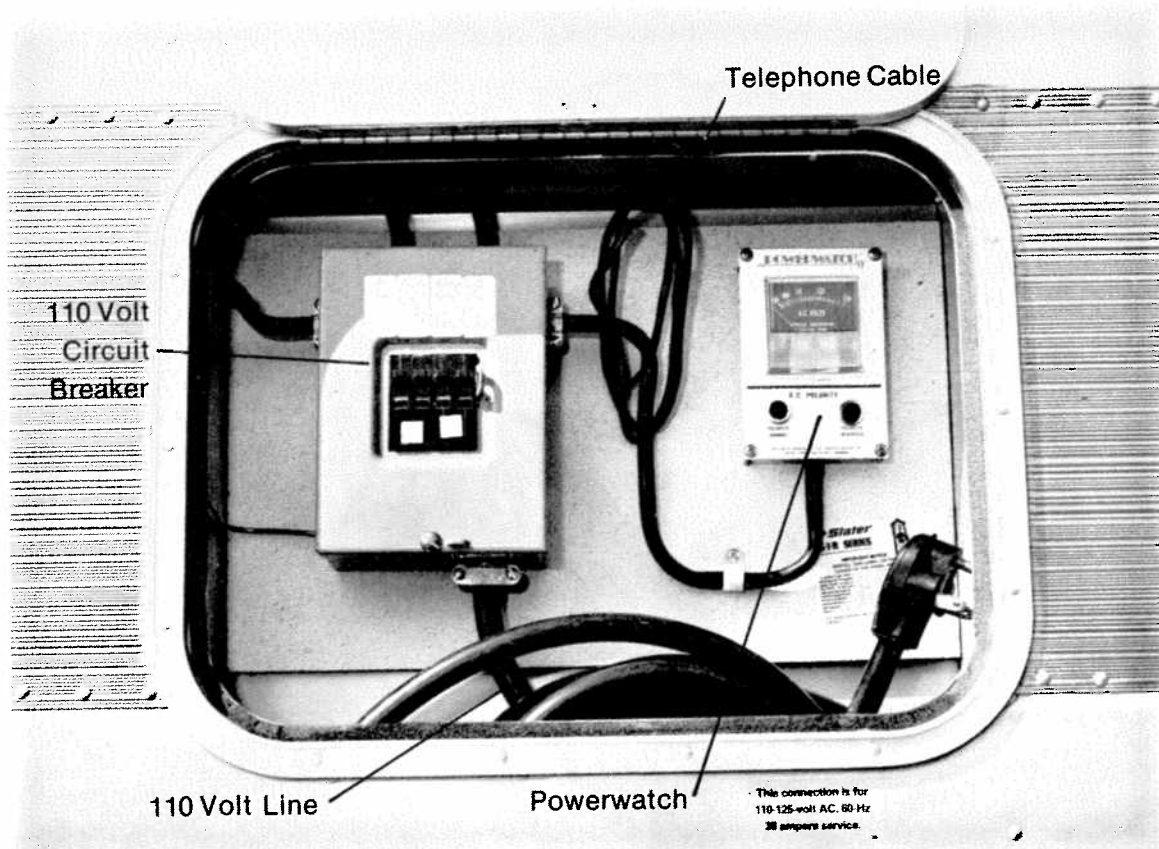
Compartment
With 12-V Fuses

When your trailer is connected to a 110-volt source, the converter/battery charger automatically charges the trailer battery. The speed and degree of charge depends on how much power is being used for lights and appliances, as only the surplus goes to charging the batteries. If you are making an extended stay, keep your trailer connected to a 110-volt source (if available). If your battery is allowed to discharge, make certain that the recharge is done at a slow-charge. Quick charges will shorten the life of the battery, as will repeated complete discharges.

The 110-volt circuit breaker panel is located in the power panel compartment (see Exterior Identification). When you are connected to a 110-volt power source, the wiring is protected by circuit breakers in the circuit breaker panel. If failure of a 110-volt circuit occurs, check the proper circuit breaker first. If the circuit breaker continues to trip after being reset, the circuit may be overloaded with too many appliances or there may be a short in the circuit. If disconnecting some appliances does not correct the problem, consult a Service Center or a Silver Streak dealer.

Trouble with your electrical system is extremely unlikely, but if it should occur, it is recommended that you contact your nearest Service Center for repairs. (A troubleshooting chart is included in this manual for emergencies only.)

When being towed, the 12-volt battery in your trailer is receiving a constant charge from the towing vehicle generator and alternator through the electrical connector. The charge rate is controlled by the voltage regulator. It is important to keep the electrical connector clean. Inspect it periodically.



Power Panel

GFI

Your vehicle is equipped with a ground fault circuit. The GFI is located in the bathroom and two GFI protected receptacles are located on the outside of the vehicle (curbside and roadside).

The ground fault circuit interrupting receptacle is designed to protect people from the hazards of line-to-~~line~~^{ground} electric shock. This protection is afforded people using tools or appliances operating from the receptacle. If protection is fed to the rest of the circuit, those receptacles are also protected if properly installed. It does not prevent electric shock, but limits the shock time to a period deemed safe for normally healthy persons.

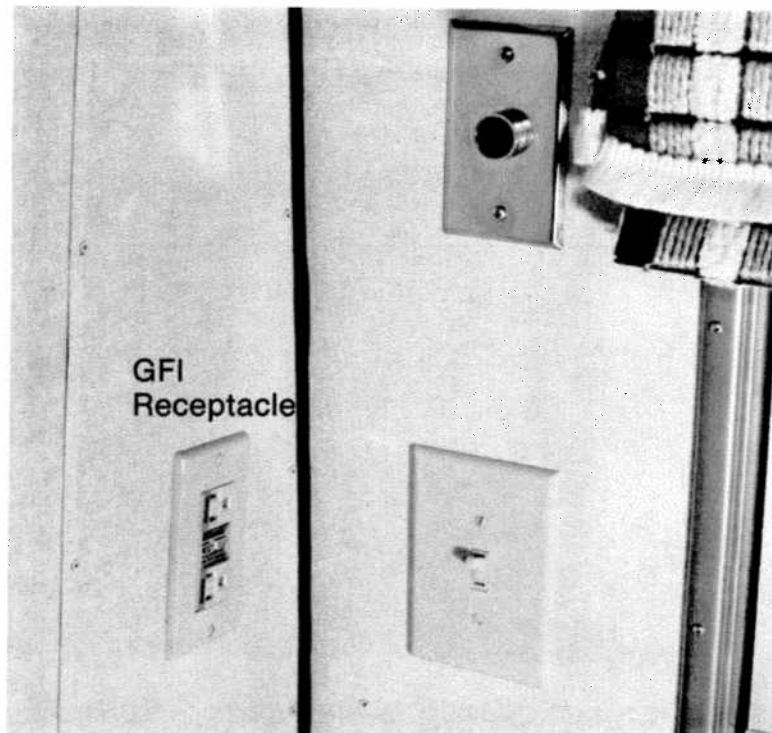
It does not protect a person who comes into contact with both power lines.

The ground fault circuit interrupter receptacle does not protect against overloads, which must be done at the fuse box by fuses or circuit breakers.

If an appliance continuously trips the GFI receptacle, the appliance is defective and should be repaired or replaced.

TO TEST

- Push "TEST" button. The "RESET" button should pop up, showing a red line which indicates that power to the protected circuit has been discontinued.
- If the "RESET" button does not pop up when test button is pushed, a loss of ground fault protection is indicated. Do not use. Call a qualified electrician.
- To restore power, push the "RESET" button.



BATTERY

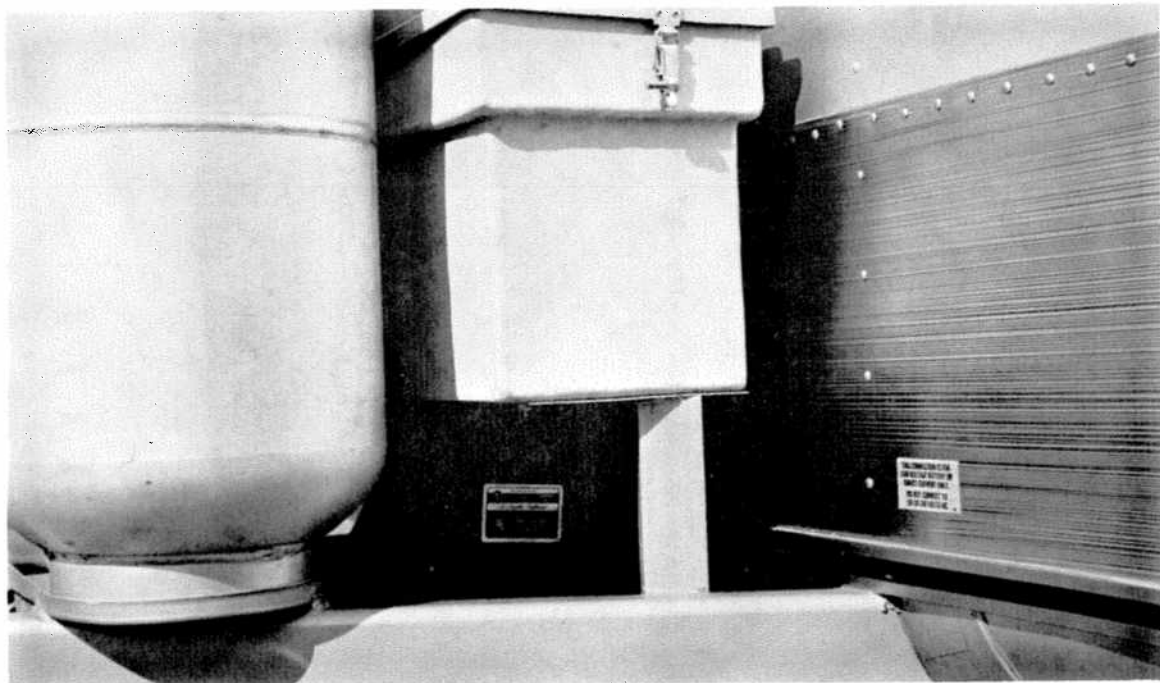
A stored battery will discharge in 30 to 45 days; therefore, it is necessary to periodically check the battery and charge it as necessary. We suggest checking the battery at least every 2 weeks in freezing weather. A fully charged battery will not freeze under normal circumstances; therefore, it is imperative that you keep your battery fully charged during the winter. A safe level of charge is a specific gravity reading of 1.225. A fully charged battery has a specific gravity of 1.250 to 1.280. Always use a hydrometer which has a temperature correction scale.

Maintain a clean battery and check terminals and cables for tightness and cleanliness. A dirty battery will dissipate its charge through surface contamination. Clean battery with a damp cloth and dry thoroughly. To clean terminals, neutralize with a solution of baking soda, rinse in clear water, and dry. Coat terminals and battery posts with a light film of nonmetallic grease. Petroleum jelly will require more frequent application. Important: reconnect the battery cables to the correct battery posts. For example, if negative ground, the black cable should be connected to the negative (-) post and the red cable to the (+) post. The polarity may be determined by inspecting the battery post which is grounded on the towing vehicle, since it must always match the trailer.

Add water to cells as necessary. Check the electrolyte level at least once a month. When you are traveling for an extended period of time, or you are in climates above 90°F, check the electrolyte level every 2 weeks.

Caution: The gases generated within a storage battery cell may be ignited by an open flame or spark in the vicinity of the battery. Do not use a match to provide light for checking the level of water.

During the winter, the battery should be removed from the trailer and stored in a cool, dry place. It should be kept full of water, cleaned, and charged monthly. A battery which is allowed to completely lose its charge will never regain its original power or a full charge.

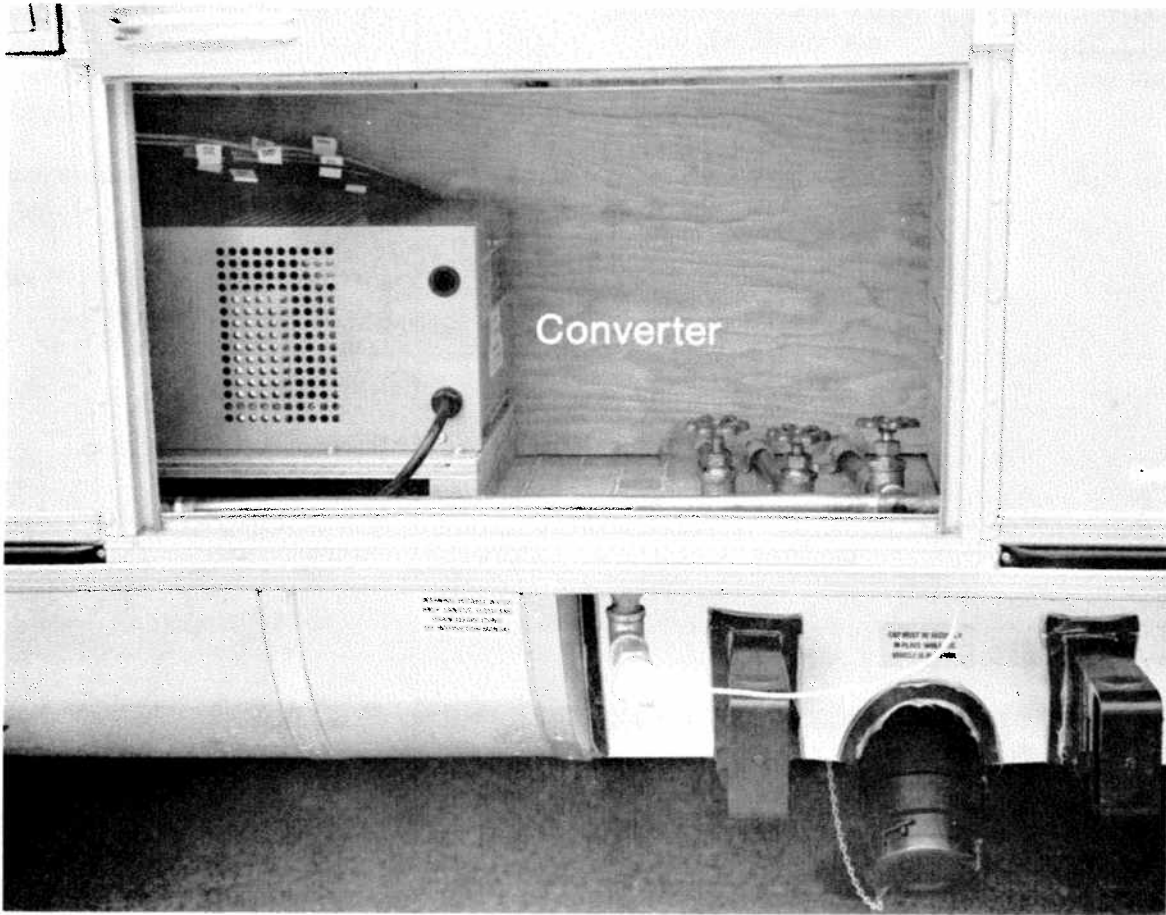


ICC Fusebox

*These run off
the 120 volt AC & Electric
system.*

CONVERTER/BATTERY CHARGER

This converter is designed to provide true electrical self-containment for recreational vehicles. It converts 110 volts AC into 12 volts DC to operate lights, fan motors, etc., within the vehicle. Most everything except radios and water heaters operates efficiently and safely on a 12-volt low-voltage system and the unit even charges your battery while in operation. The advance design of this 50-amp converter provides exceptional reliability. The use of a ferroresonant constant voltage control maintains output at a constant voltage regardless of different input voltages that may be encountered in different areas.



Battery Charger/Converter Compartment

ELECTRICAL TROUBLESHOOTING

| Symptom | Possible Cause | Remedy |
|---|---|--|
| No 12-volt power (Lights, appliances do not work) | Input line and/or battery not connected. | Make necessary connections. |
| | Trailer battery on wrong polarity. | See Electrical System. |
| Blown fuse | Overloaded circuit (over 50 amps). | Turn off switches to reduce load. Replace blown fuse. |
| | Electrical short. | Find blown fuse and identify circuit. See wiring diagrams and check circuit for defective wiring, lamps, or motors. |
| | Shorted battery. | Replace battery and fuse. |
| | Battery terminals not properly connected. | Make proper connections; replace fuse. |
| Dim lights or sluggish fan motor | 25- or 50-cycle power (some foreign countries). | Use 60-cycle power. |
| | Discharged battery (when operating without 110-volt line). | Charge battery. |
| | Battery is low on water. | Add distilled water to battery. |
| Converter/battery charger will not charge battery | Input line not connected. | Connect input line. |
| | Battery not connected (or polarity reversed). | Connect battery to converter/battery charger. |
| | Bad battery. | Replace battery. |
| | Too many lights and appliances in use. | Reduce electrical load. |
| | Fuse blown. | Replace fuse. |

Purchased - Spring of '81

(1/16/84) Lvb. Whl. Brgs
 Feb 1984
 Apr. '86
 July '89
 June, '92
 May 18, '94
 Replaced A/C Flower
 May 24, '85
 Apr. '89
 June '92
 June '95
 Replace by 25.000
 brake assy. on
 all four wheels
 on May 18, '94

LUBRICATION AND MAINTENANCE

| Item | Every | Every | Every | Procedure |
|-------------------------------------|------------------------------|------------------------------|--------------------------------|---|
| | 1,000 miles or 30 days | 5,000 miles or 90 days | 10,000 miles or 6 months | |
| All Exterior Door Locks | X | | | Lubricate with dry graphite. |
| Battery | X | | | Check water level — fill with distilled water only. See Electrical System. |
| Battery Charging | | | | Inspect and adjust. |
| Brakes | | X | X | Pull pin and lubricate with light household oil. |
| Breakaway Switch | | | | Lubricate with light household oil. |
| Entrance Door Hinges | X | | | Lubricate with engine motor oil. |
| Hitch Ball Latch | X | | | Lubricate with light household oil. |
| LPG Hold-Down Knob | X | | | Lubricate moving parts. |
| Main Door Step | | X | | Clean fan blades and wash filter. |
| Range Exhaust Hood | X | | | See Refrigerator Section |
| Refrigerator Flue Cleaning | X | | | Lubricate with light household oil. |
| Roof Vent Elevator Screws | X | | | Coat with paraffin. |
| Strike Pocket on Main Door | X | | | Check for foreign objects. |
| Tires | | | | Air Pressure — See Tire Section. |
| Wheel Bearings | | | X | Clean, repack, and adjust. |
| Wheel Lug Bolts | X* | | | Check for tightness. |
| Window Seals/Door Seals | X | | | Clean with mild detergent and coat with window seal lubricant. |
| Electrical Connector and Receptacle | X | | | Clean contacts and coat with "Spra-Kleen" or equivalent. |

*On new trailers check lug bolts every 200 miles for the first 1,000 miles.

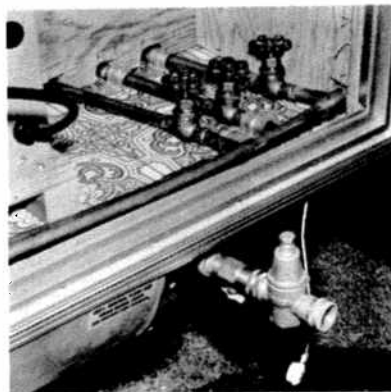
New Batteries - Spring of '84
 New Tires - Spring of '84
 Tire Tell Tales - AUG. of '84
 New Brake Shoes & Pads - July of '86
 New W.R. Hammer - Mar. of '89
 New Brake Pads of Grease Socks - July '89
 New Batteries - May '91
 New 6V. Batteries - Oct. 30, '96
 Replaced 2-6V. Bat. - Sept. 30, '98
 Replaced 2-6V. Bat. - Mar. 31, '03

WINTERIZING

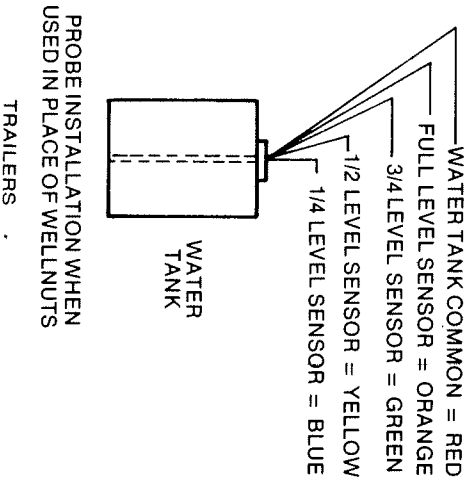
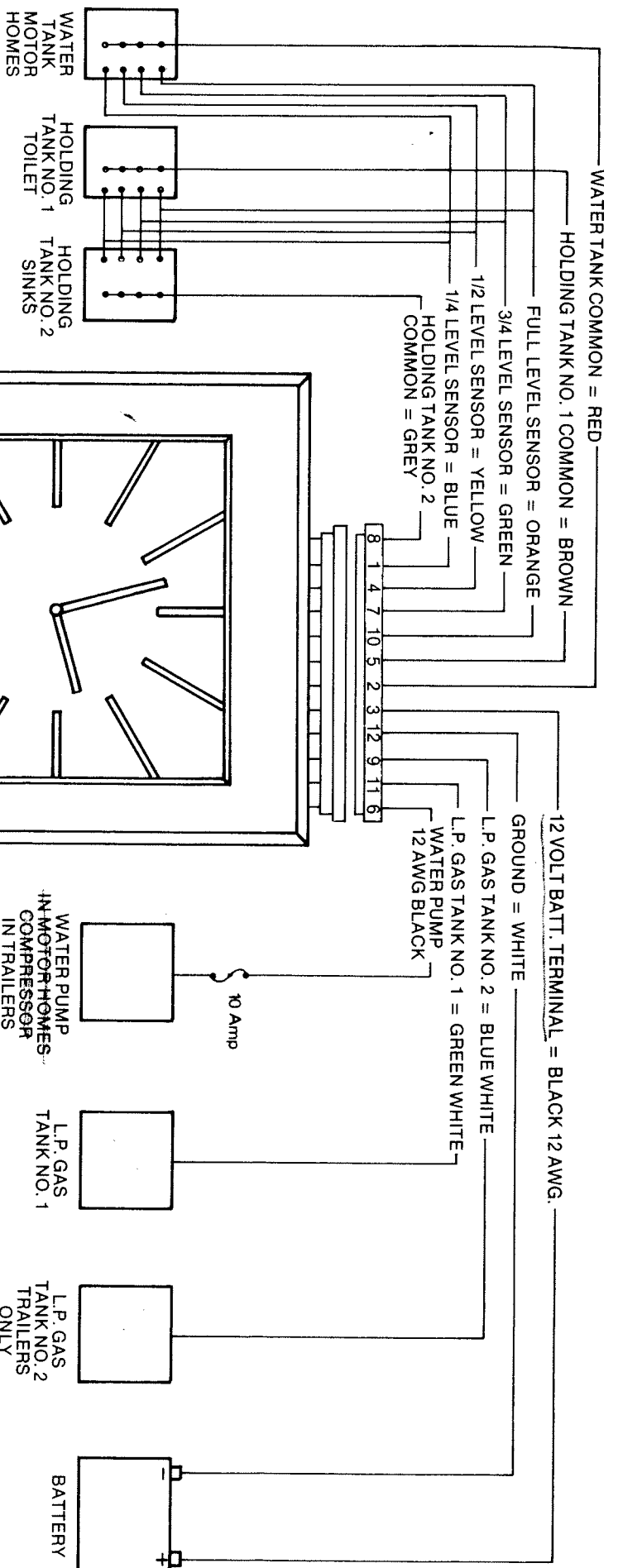
The main consideration in winterizing is to guard against freezing damage to the hot and cold water systems, the waste drain system (including the traps), the waste-holding tanks, the water heater, and the battery.

When storing your trailer for short or long periods, flush out all the drain lines and the holding tanks. Drain the entire water system including the water heater and the water storage tank. To winterize your trailer, follow this procedure:

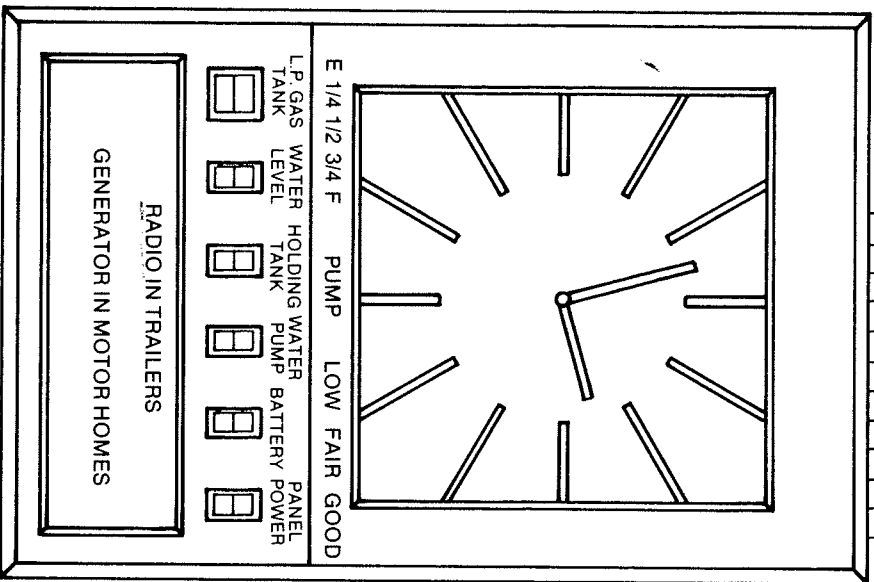
- Level the trailer from side to side and front to rear (see Trailer Leveling Section).
- Open all faucets.
- Turn water pump switch to “OFF” position.
- Open all drain valves. One is located on the water heater and is accessible through the water heater access door. On all models, two are located in the converter/battery charger compartment. There is a drain valve on the city water inlet.
- Open and flush the toilet flushing valve. Depress hand spray thumb button of the water-saver toilet and hold the spray head below rim of toilet and drain the hand spray line.
- Lower the front of trailer as low as the power jack will allow until water ceases to drain. Then raise trailer as high as power jack will allow so that any remaining water will drain out the rear drain valves.
- After the water has stopped draining, apply air pressure (if available) to drain lines with all valves and faucets open. This will force any remaining water from the water heater and any water trapped in low areas.
- Pour a cup of antifreeze (Glycol) into the lavatory, sink, and tub drains to prevent freezing of water in traps.
- Open the waste-holding tank drain valves and drain and flush tanks thoroughly.
- Remove the lower portion of Water-Gard purifier and drain.
- Remove any items from interior that might be damaged by freezing.



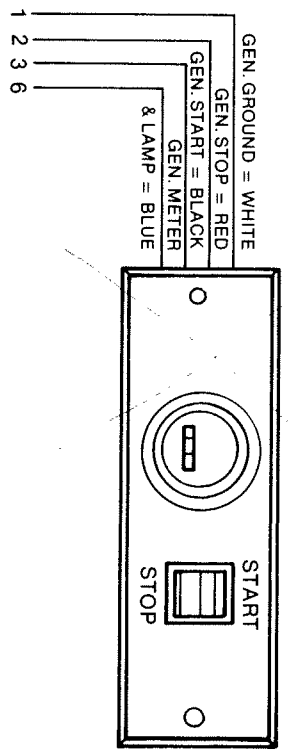
Drain Valves
in Converter/Battery Charger
Compartment

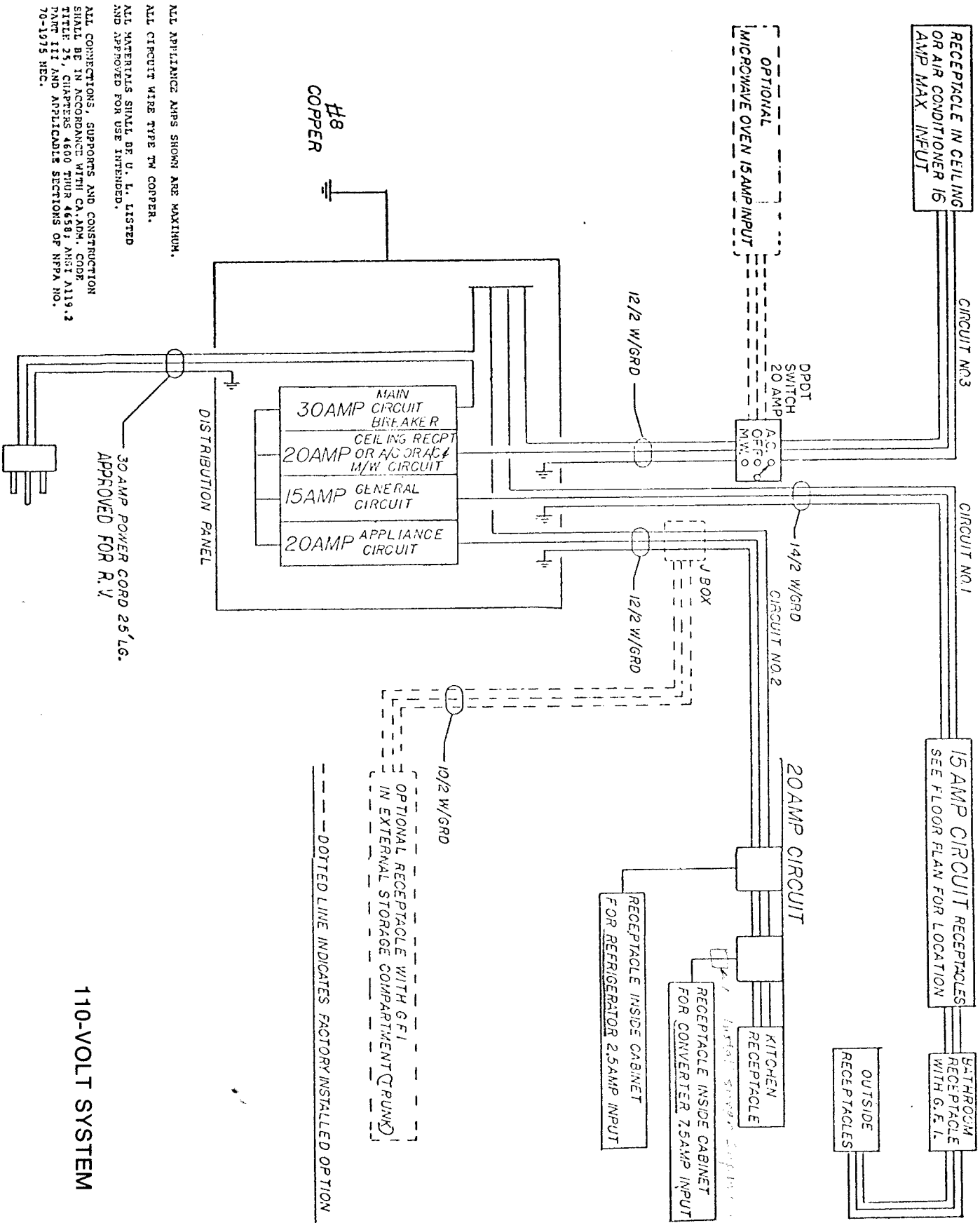


PROBE INSTALLATION WHEN USED IN PLACE OF WELLNUTS TRAILERS



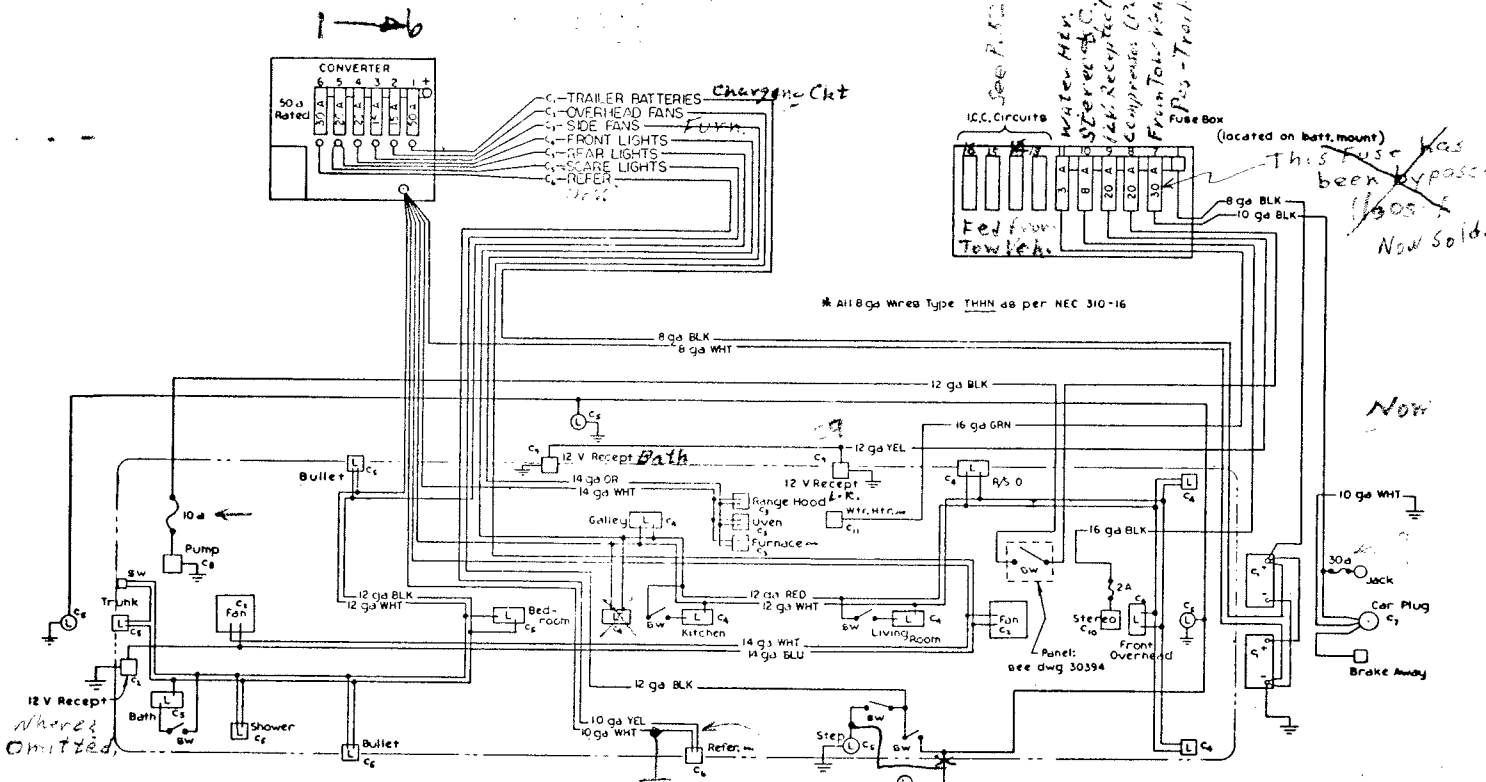
CONTROL PANEL ALL UNITS





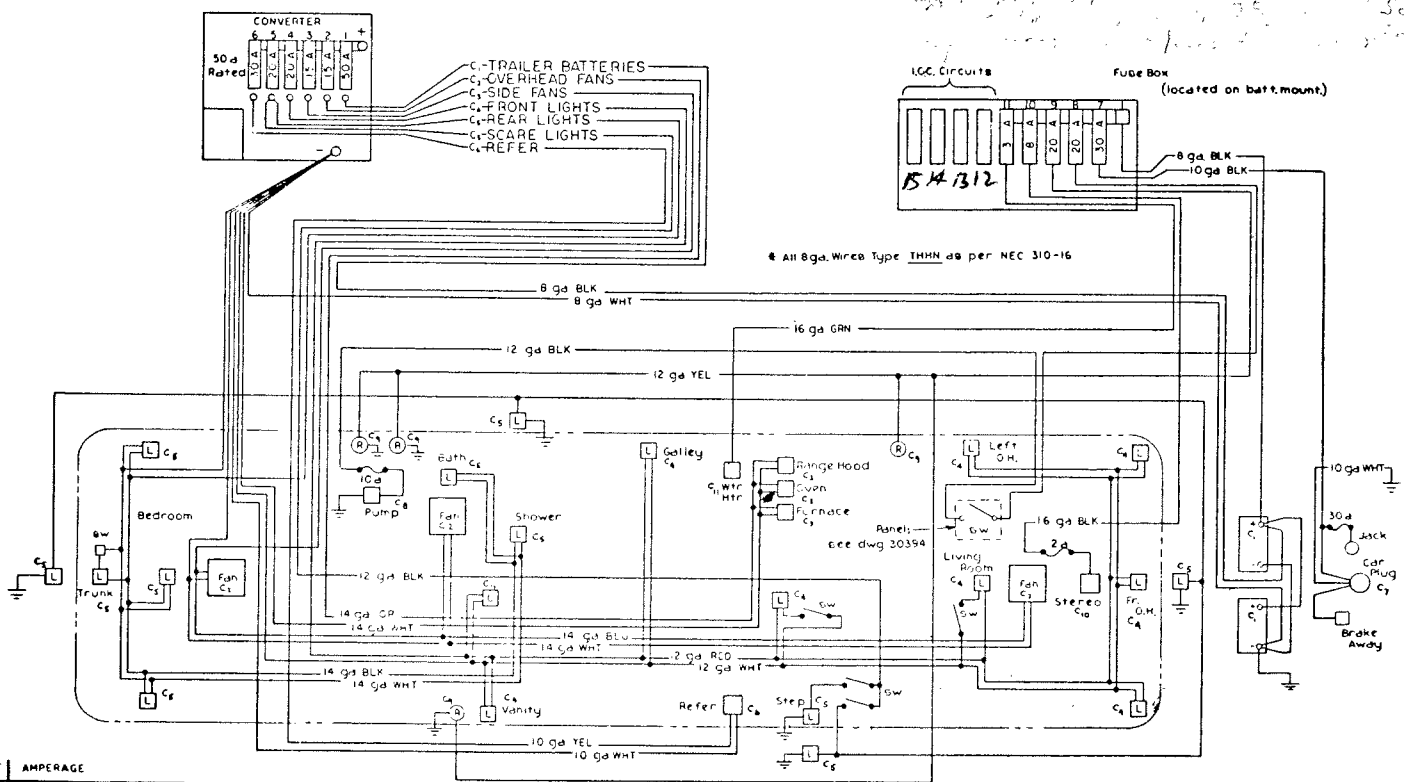
ALL APPLIANCE AMPS SHOWN ARE MAXIMUM.
 ALL CIRCUIT WIRE TYPE TM COPPER.
 ALL MATERIALS SHALL BE U. L. LISTED AND APPROVED FOR USE INTENDED.
 ALL CONNECTIONS, SUPPORTS AND CONSTRUCTION SHALL BE IN ACCORDANCE WITH CALIF. CODE TITLE 25, CHAPTERS 4600 THRU 4699, ANSI A119.2 PART III AND APPLICABLE SECTIONS OF NFPA NO. 70-1975 NEC.

110-VOLT SYSTEM



12 VOLT WIRING RB

*If battery @ 12V is not so bad, not
going to be same for 12V service
... ..*



12 VOLT WIRING CB

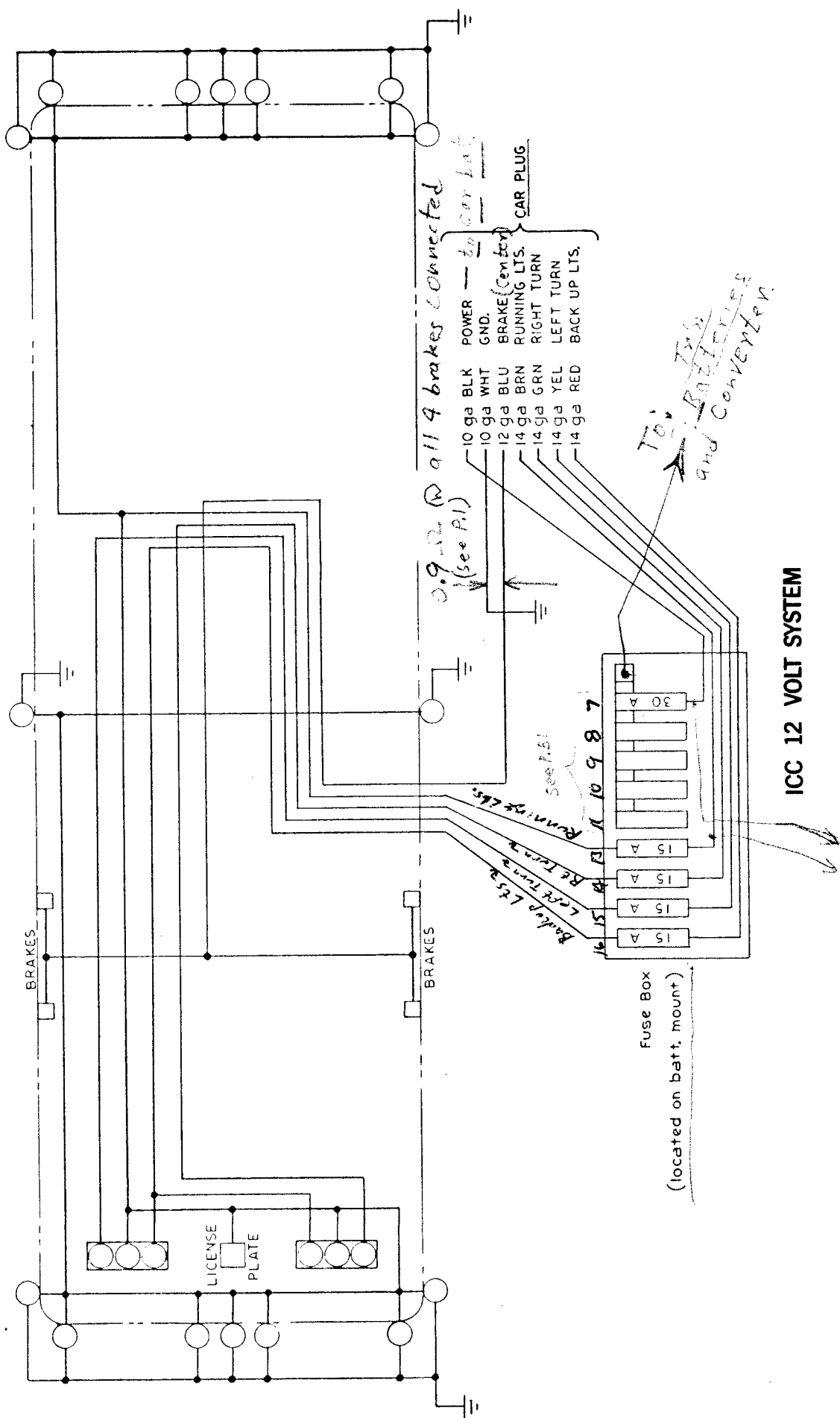
| CIRCUIT | AMPERAGE |
|---------|----------|
| C1 | 9.0 |
| C2 | 13.3 |
| C3 | 13.3 |
| C4 | 15.4 |
| C5 | 19.0 |
| C6 | 20.0 |
| C7 | 30.0 |
| C8 | 20.0 |
| C9 | 20.0 |
| C10 | 2.0 |
| C11 | 2.0 |

Total converter load:
90.4 amps
As per NFPA 501C, ch. 4-51
42.6 amps

Battery circuits

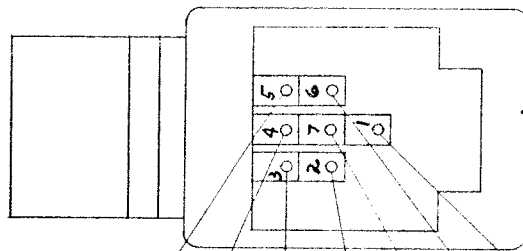
Batteries have 600 to 700 wath hrs ea.
Double Fluor. L.L.e fixtures pull 17.5 w. ea. (not 30w.)

12 V Fuses: 3, 8, 15, 20, 30, 40, 50
Completion: (10)



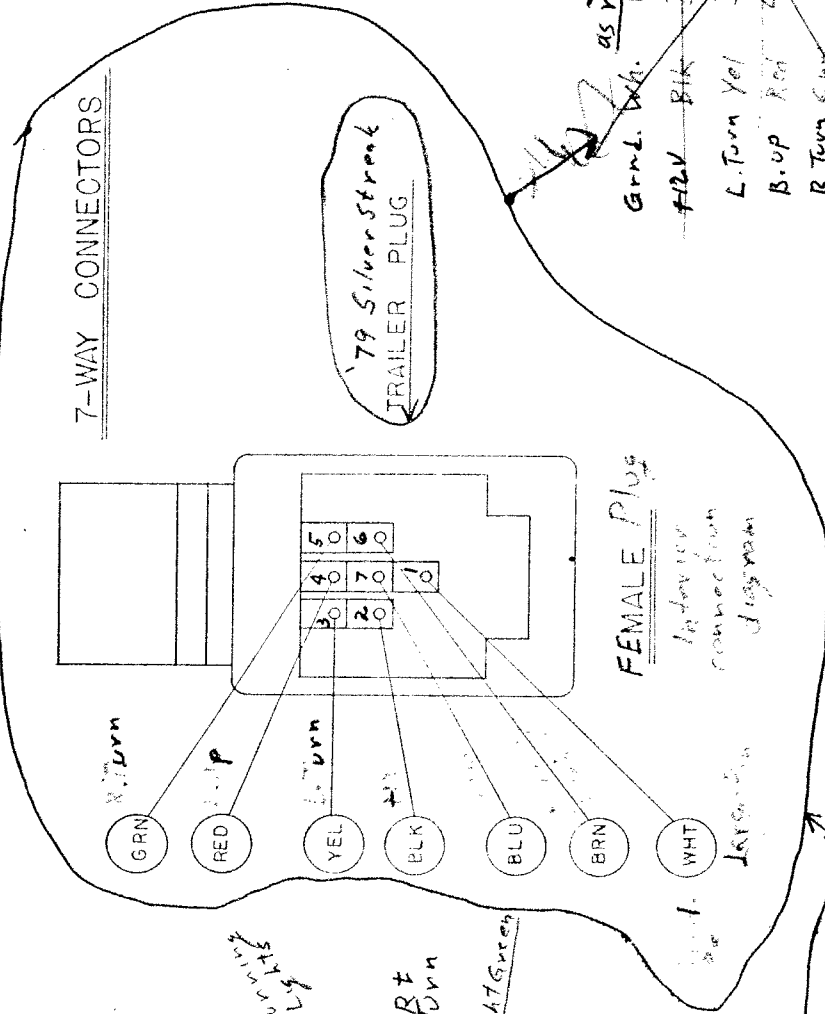
Change these at
 10/1/51 for
 run 12/12/51

7-WAY CONNECTORS



FEMALE Plug
Inventory
connector
Diagram

- GRN R. Turn
- RED +12V
- YEL L. Turn
- BLK +12V
- BLU L. Turn
- BRN R. Turn
- WHT Ground



- Grnd. Wh. as need to et
- +12V Bk
- L. Turn Yel
- B. up Red
- R. Turn Grn
- Running Brake
- Brake Wh



(REF DWG 20452)

| NO. | REVISIONS | BY |
|-----|-----------|----|
| 1 | | |
| 2 | | |
| 3 | | |
| 4 | | |
| 5 | | |
| 6 | | |

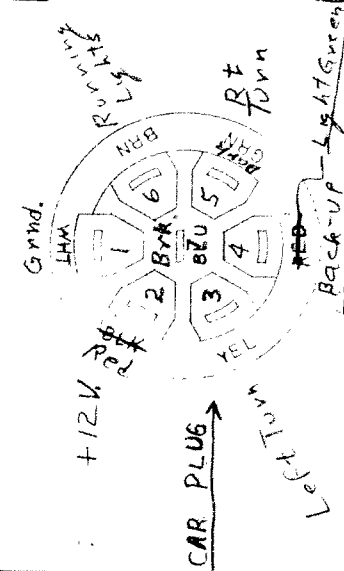
SILVERSTREAK
TRAILER COMPANY, INC.
2319 NORTH CHICO AVENUE
SOUTH EL MONTE, CALIFORNIA 91733

SCALE: N/C
DATE: 11-22-76
DRAWN BY: [blank]
CHK'D: [blank]

100-12 VOLT SYSTEM
TRAILERS

DRAWING NUMBER: 20452

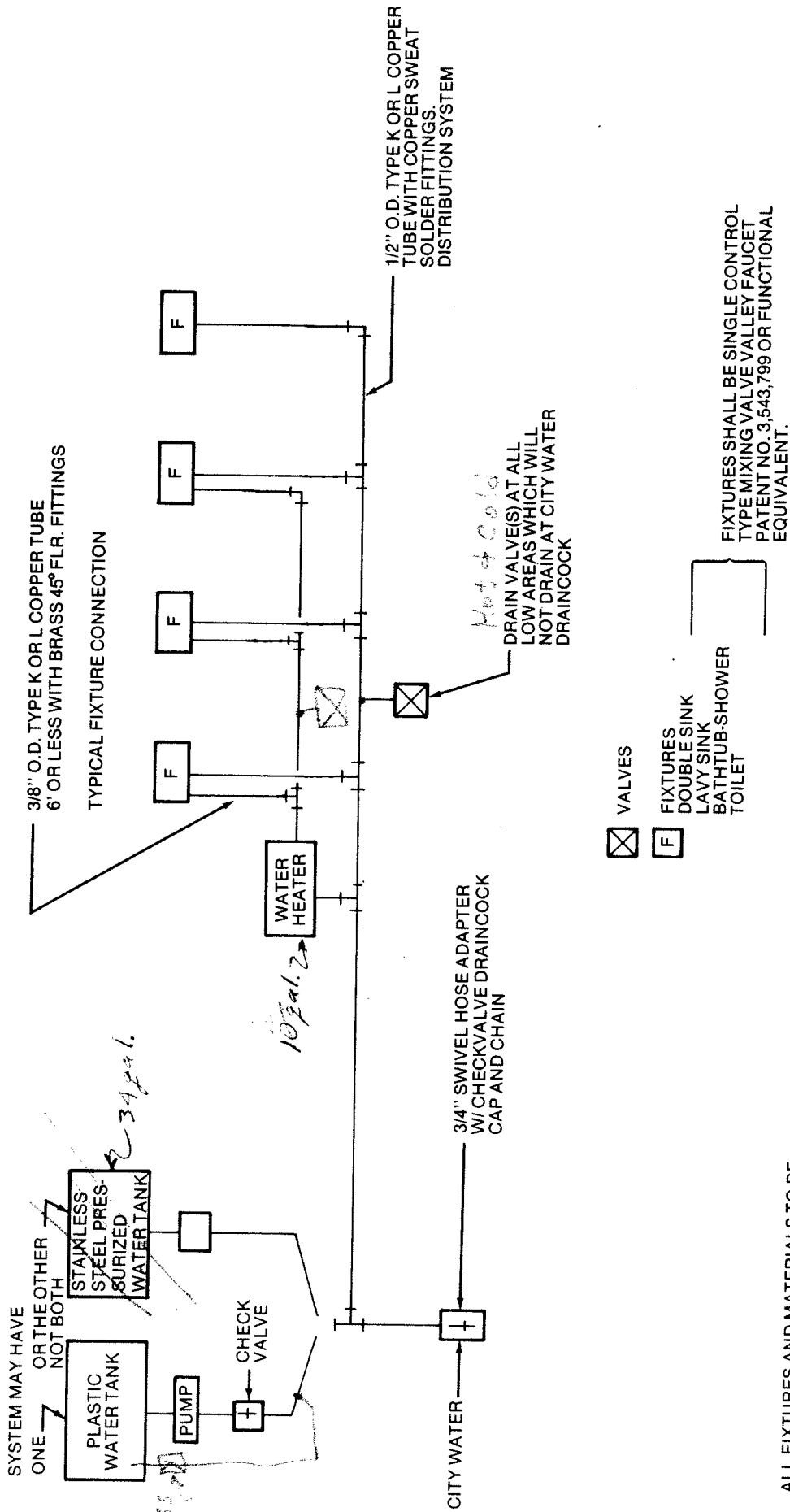
Suburban



CAR PLUG

| # | 10 GA | 12 GA | 14 GA | 14 GA | 14 GA |
|---|-------|---------|-------|-------|---------|
| 2 | BLK | POWER | GRD | GRD | POWER |
| 1 | WHT | GRD | BLU | BLU | GRD |
| 7 | GRN | BRN | BRN | BRN | BRN |
| 6 | GRN | RUNNING | GRN | GRN | RUNNING |
| 5 | YEL | RIGHT | YEL | YEL | RIGHT |
| 3 | RED | LEFT | RED | RED | LEFT |
| 4 | RED | BACK UP | RED | RED | BACK UP |

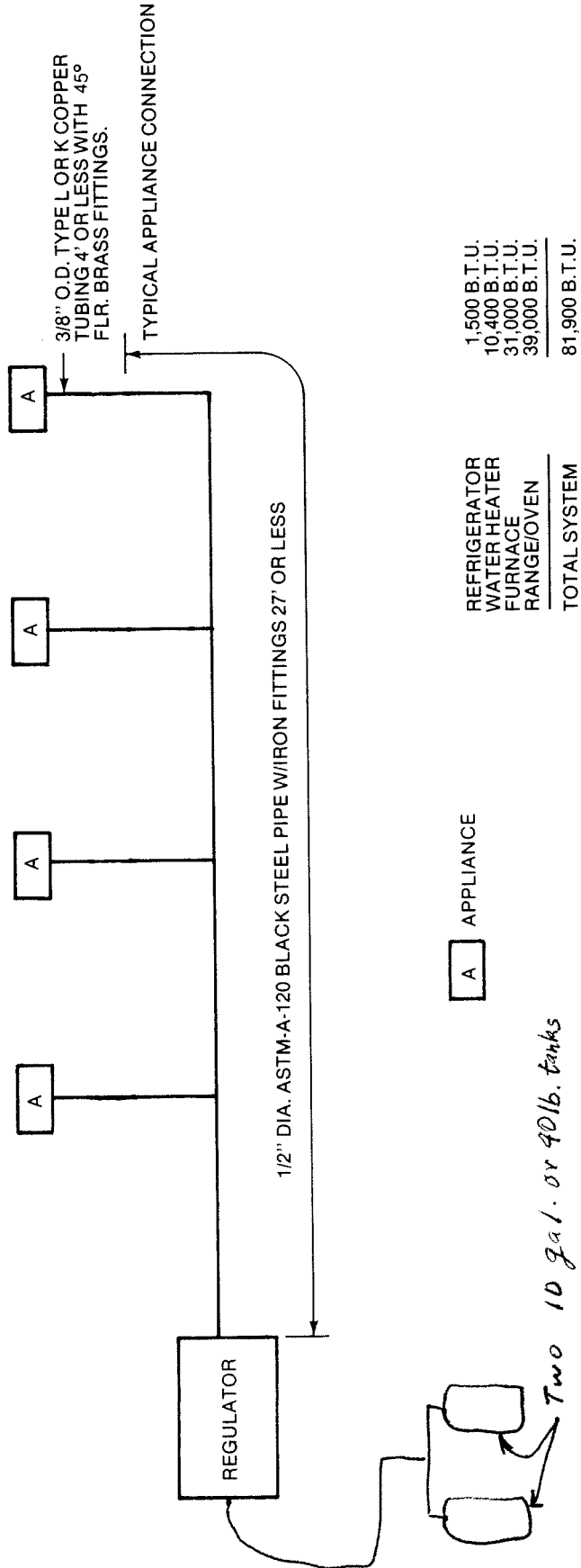




ALL FIXTURES AND MATERIALS TO BE IAPMO LISTED.

ALL CONNECTIONS, SUPPORTS AND CONSTRUCTION SHALL BE IN ACCORDANCE WITH CA. ADM. CODE TITLE 25, CHAPTERS 4800 THRU 4952 AND ANSI A119.2 PART 1.

WATER DISTRIBUTION SYSTEM

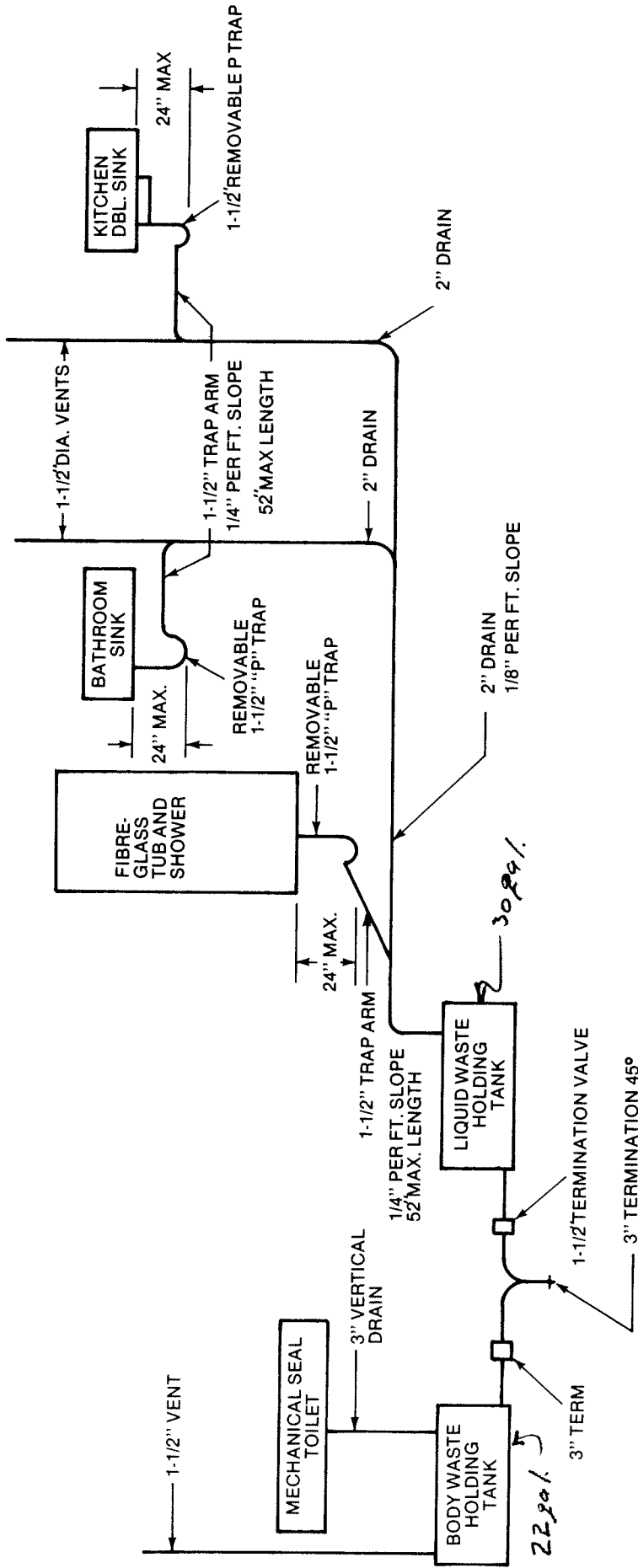


Two 10 gal. or 40lb. tanks

L.P. GAS ONLY SYSTEM

ALL APPLIANCES AND MATERIALS SHALL BE U.L. LISTED AND APPROVED FOR USE INTENDED.

ALL CONNECTIONS, SUPPORTS, AND CONSTRUCTION SHALL BE IN ACCORDANCE WITH CA. AMD. CODE TITLE 25, CHAPTERS 4665 THRU 4788 AND ANS/A119.2 PART II.



ALL FIXTURES AND TANKS TO BE IAPMO LISTED.

ALL PIPES AND FITTINGS TO BE ABS PLASTIC IAPMO LISTED.

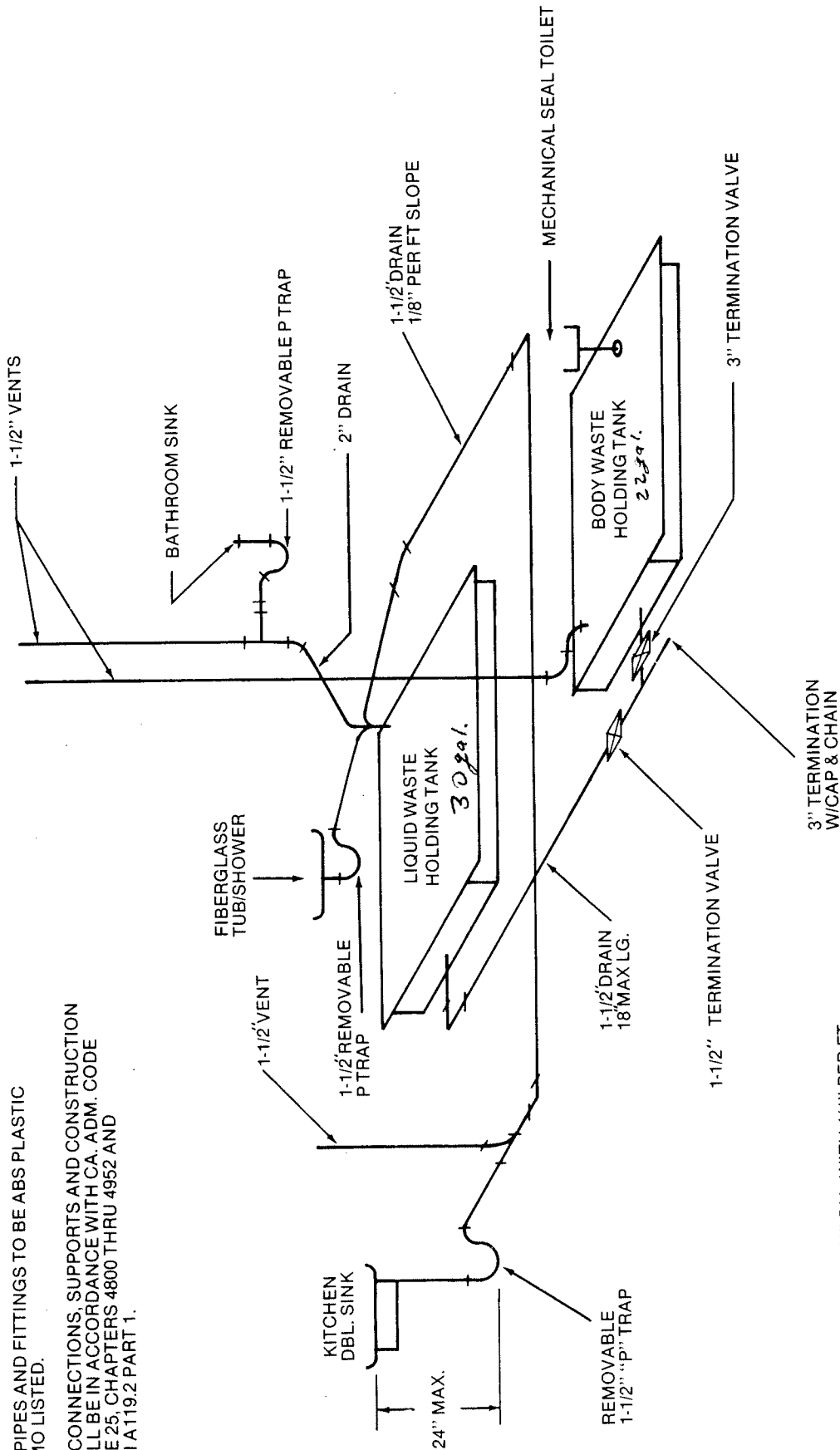
ALL CONNECTIONS, SUPPORTS AND CONSTRUCTION SHALL BE IN ACCORDANCE WITH CA. ADM. CODE TITLE 25, CHAPTERS 4800 THRU 4952 AND ANSI/A119.2 PART 1.

WASTE SYSTEM

ALL FIXTURES AND TANKS TO BE IAPMO LISTED.

ALL PIPES AND FITTINGS TO BE ABS PLASTIC IAPMO LISTED.

ALL CONNECTIONS, SUPPORTS AND CONSTRUCTION SHALL BE IN ACCORDANCE WITH CA. ADM. CODE TITLE 25, CHAPTERS 4800 THRU 4952 AND ANS/A119.2 PART 1.



ALL TRAP ARMS TO BE 1-1/4" DIA. WITH 1/4" PER FT. SLOPE LESS THAN 52" LONG
 ALL DRAIN LINE FITTINGS TO BE LONG TURN OR EQUAL

WASTE SYSTEM